

Epsilon Sigma Alpha
INTERNATIONAL®

2010 -2011

Oklahoma State Council

Petticoat Journal



Jacque Edwards, President

Volume 59 Issue 2

October/November

Table of Contents

<u>Page</u>	<u>Contents</u>
3	President
5	1 st Vice President/Nominating Committee Chairman
5	2 nd Vice President/Educational Director
8	Project Director
8	PJ Editor
9	Jr. Past President/Disaster Fund Chairman
9	District II Coordinator
11	District III Coordinator
11	District IV Coordinator
12	District V Coordinator
13	Chaplain
13	Circle of Life
14	Contest Chairman
15	Convention Chairman 2011
15	Diana
16	Easter Seals
16	Membership
17	Outstanding Youth
17	Philanthropic
17	Publicity
17	Scrapbook
18	Oklahoma 2009-2010 Awards
21	Special Thank You's
22	Chapter Chatter
28	Thank You ESA Day
29	Give Thanks Walk
30	Educational Report Form
31	Nomination Form
32	2011 Convention Registration
33	2011 Hotel Information
34	Convention Program Ads Form
35	Oklahoma Vest Order Form
36	Minutes of August 21, 2010 Exec/General Board Meeting
38	Minutes of August 21, 2010 Leadership Seminar

Cruisin' with your President Jacque Edwards



August 10, 2010 Cuba Gulley celebrated her “90th” Birthday. What a milestone.

August 11, 2010 Finished packing to drive to the OKC Airport to board my plane to Bloomington, MN for the IC Convention. Met up with Rosalie Griffith, Judi York, Aletha Bolt and Deb Hughes. Enjoyed sightseeing for a couple of days and then joined Doc & Cathy Holsted on Monday evening for the boat/dinner cruise with other members from across the state. The food was excellent and the water was nice as was the two-story boat. I participated in quite a few workshops, attended the general assemblies, represented Oklahoma by carrying our State Flag in a very impressive ceremony, attended the beautiful Memorial Service presented by OK member and IC Chaplain Judi York, enjoyed the beach party candidate night, participated in the St. Jude Scavenger Hunt at the “Mall of America”, presided at the Central States Workshop and of course enjoyed the Awards Luncheon where my granddaughter Brittany Labus’ entry on “What ESA Means to Me” essay received first place. Her mother Shelly Labus, State Corresponding Secretary was in attendance also and it was pretty rare and cool that a mother and daughter gets to walk to the stage together to receive an award for yet another daughter and granddaughter. The formal style banquet on Saturday evening was lovely and it was especially meaningful to see my long-time friend Dora Dill installed as IC President and our own Judi York installed as IC Parliamentarian. Departure to Oklahoma was on Sunday, July 11, 2010.

July 26, 2010 Attended the Kappa Theta social at Libby Zaage’s our chapter President. She is a wonderful cook and spoils all the members.

August 9, 2010 Attended Kappa Theta business meeting at the Stables Restaurant where we all enjoyed the food and a guest speaker.

August 14, 2010 Attended the “50th” Wedding Anniversary for State 1st Vice President Gwynn Nell Swanson and her husband Dan held in Blanchard. What a lovely party. The food and decorations (our era 50’s) were wonderful. Thank you Gwynn Nell for the invitation.

August 20, 2010 I had the opportunity to meet several members for dinner of which two ladies were from Cherokee. They had not participated in any previous State events and it was so fun getting to know the new chapter President Sherry Green and member Kristi Hughes. Met several ESA members at the Sleep Inn in Guthrie where the AA’s teamed us up to go downtown in Guthrie to participate in a “Scavenger Hunt” walking around one block square. Libby Zaage and Connie Johnson really worked hard at putting this evening together. Everyone learned a lot about the old Historical buildings in downtown Guthrie. Some of us purchased coffee and homemade chocolates from Rick’s Fine Chocolates. Those on Gwynn Nell’s team won the prize. We then went to Braum’s and treated ourselves to ice cream. Approximately 25 or so attended the evening and what a fun time it was.

August 21, 2010 The Leadership Seminar was started off with the Mayor of Guthrie Chuck Burtcher giving us a brief history of Guthrie and its capital and mentioning the Sante Fe Depot where our meeting was held. Contest Billye Peterson and her wonderful Contest Chairs presented a skit entitled "These Boots are Made for Walkin". Way too cute and what a fun way to communicate our Contest. Two guest speakers attended, the first being the wife of Herb Gilkey, Executive Director of the Ronald McDonald House in OKC giving us updated information on what they do and need. The members across the state collected the pop-top rings and we presented her a big box full. She was so surprised and truly grateful. We enjoyed the silent auction, the grocery and quilt raffle and the chapters that participated in the ESA Shopping on the Mall. Our afternoon speaker was Marilyn Harmon. She started a charity called "SoleMates" and we sisters collected and presented her with 49 pairs of shoes. It brought tears to her eyes. This charity has kept her going as she has an eye disease that has robbed her of sight in one eye completely and has impaired her other eye. What a wonderful lady from Blackwell and so upbeat in spite of her disabilities. She is definitely an excellent example for us to follow and exemplifies my "Spirit Stick" positiveness.

August 24, 2010 Attended the Easter Seals 85th Annual Meeting & Luncheon in OKC where the Oklahoma Council of ESA was presented with a Certificate of Appreciation.

August 28, 2010 District II held their Leadership in Clinton and unfortunately I was at the Edmond Medical Center dealing with just being told my husband Ron had passed away. I can't begin to tell you how much he meant to me and what a great loss this is. My ESA sisters have been troopers for me and my family. I thank you for that.

.....

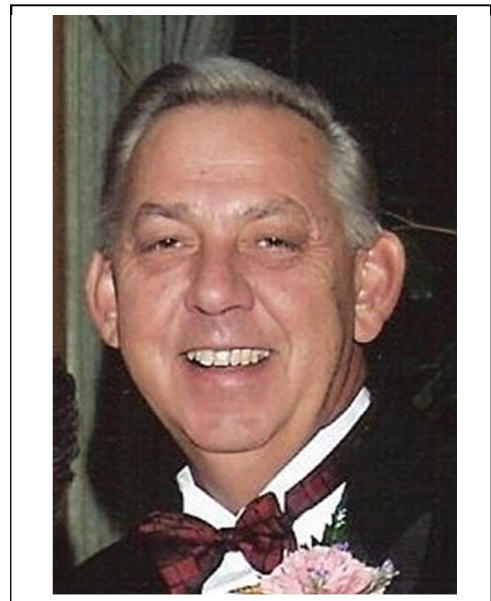
I want to thank each and every one of my ESA sisters across the state for the cards, emails, phone calls, thoughts and prayers. It has been overwhelming and I am truly grateful.

You can't possibly know the feelings of the hurt and pain of the loss of a husband unless you have experienced it. The quietness in my home is unexplainable and the emptiness is so unreal.

I continue to look for him everywhere I turn and I know with God's love and his arms around me and the support of my sisters I will survive, one day at a time.

I love each and everyone of you.

With ESA Love
Jacque Edwards
State President



**1st Vice President/Nominating Chairman
Gwynn Nell Swanson**



Hi Ladies,

I want to let you know how excited I am for the coming year. I look forward to any one that is interested in running for a state office or would like to be on the general board as an appointed committee chairman. If you know any ESA members in your chapter or any other members that would like to serve as a committee chairman or state officer please let the nominating committee or me know. Email me personally or come and talk to me. I'm here for you.

I already have a few committees filled but I am waiting to fill more. There is a nomination form in the PJ or you can get a copy from the Oklahoma ESA web site at oklaesa.org.

Come and join me on the board and let's have fun.

Thank you,

Gwynn Nell Swanson

1st Vice President/Nominating Chair/District Coordinators Advisor



**2nd Vice President/Educational Chairman
Joyce Gibson**

Welcome Back!! Many of you have started your education programs for the year. I hope all of you are having a good time.

The theme I have selected for this year is "Approaching the Years with Grace in ESA." This theme can involve any topic you feel will make you and all around you better. You can involve the members of your chapter in a program. Several of us have knowledge that we can share with others to help make life easier as we age.

I encourage each chapter to complete at least one program utilizing this theme.

Educational reports can be submitted online via email or snail mail. The report form is available on our Oklahoma website (www.oklaesa.org – click on forms) and in the August/September PJ. Or you may contact me and I can mail the form to you.

Gold Link Award V - each chapter submitting at least six timely reports.

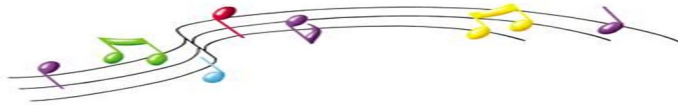
Gold Seal Entry - a notebook compiling all the chapter educationals for the year. There must be a minimum of six timely reports.

Distinguished Athenian-a chapter educational director is recognized for outstanding contributions to her chapter, community and State Council. To be eligible she must submit a Gold Seal Entry and be nominated by her chapter president.

State Educational Director Special Award - present and report an educational program on this year's theme "Approaching the Years with Grace in ESA." (cont. pg. 6)

Please be sure the chapter state dues are paid by 01-01-11 to be eligible to compete. Chapter members please encourage your educational director to submit a Gold Seal entry and then the president can nominate her as Distinguished Athenian. It would be phenomenal to have every chapter recognized for educational programs.

Joyce Gibson
P.O. Box 179, Norman, OK 73070
Phone: 405-364-0484
Email: joiesa02@aol.com or secondvp@oklaesa.org



Educational:
TEN THINGS WE SHOULD KNOW ABOUT SOCIAL SECURITY

Social Security provides benefits to 52.5 million Americans. Nearly 14 percent of people 65 and older rely on Social Security for 100 percent of their family income. About 50 percent of the people in this age group count on benefits for 50 percent of their income. The important role played by Social Security is simple to understand, but the program itself can be complicated. If you're approaching retirement, or even if you're already there, here are 10 things you need to know about Social Security.

Is Social Security just for retired workers? No. In December 2009, 15 percent of Social Security beneficiaries were disabled workers; 8 percent were children; 8 percent were widows, widowers and parents; and 5 percent were spouses. The remaining 64 percent of beneficiaries were retired workers.

At what age can I start collecting Social Security benefits? Workers can begin receiving benefits at age 62, but your benefit will be greater if you wait until your full retirement age (currently 66) or later. Widows, widowers, surviving children, the disabled and children of the disabled can start collecting earlier. Full retirement ages are based on the year of your birth.

How do I sign up for Social Security benefits? Apply for Social Security benefits online, at your local office or by phone at 800-772-1213. To collect your full retirement benefits, apply to the Social Security Administration (SSA) three months before you wish to receive your first payment.

How long do I need to work to become eligible for benefits? If you were born in 1929 or later, you need to work at least 10 years to become eligible for Social Security. The SSA determines eligibility with a system of credits. Basically, you earn up to four credits for every year worked, and you need a total of 40 credits to qualify for Social Security. (cont. pg. 7)

Must I stop working to collect Social Security benefits? No, you can receive benefits while working. But, if you are younger than the full retirement age (currently 66) and earn more than a certain amount, your monthly benefits will be temporarily reduced. Once you reach full retirement age, however, your benefits will be increased to make up for what was lost. If you're turning 66 in 2010, the amount you can earn without a reduction in benefits is \$37,680. If you're younger than 66 for all of 2010, the amount you can earn without a reduction in benefits is \$14,160. After you reach your full retirement age, you keep all of your benefits no matter how much you earn.

What's the maximum monthly Social Security benefit? For a worker retiring in 2010 at the full retirement age of 66, the highest monthly amount is \$2,346. In December 2009, the average monthly Social Security benefit for a retired worker was about \$1,168.

Can I receive Social Security benefits based on the earnings of a former spouse? Yes, as long as you were married for 10 years and you aren't remarried. If so, you're eligible to claim Social Security benefits under your ex-spouse's earnings if they turn out to be higher than your own.

How can I boost the amount of my Social Security check? Bottom line: The longer you wait to start collecting after you become eligible at 62, the higher the amount you'll receive. For each year you delay, your Social Security benefits will increase between 7 percent and 8 percent annually up to age 70.

How should I receive my Social Security payments? Your best bet is to sign up for direct deposit into your bank account. Paper checks can get lost in the mail. The SSA plans to do away with paper checks altogether by 2013 in favor of direct deposit and debit cards.

When someone dies, how does the Social Security Administration know? The SSA receives reports of beneficiary deaths from family members, funeral homes and other government agencies. You should inform the SSA within a month of someone's passing.

I hope this list helps get you started with knowing what questions to ask. Remember, "knowledge is power."

Joyce Gibson
OK State 2nd Vice President/Educational Director
Email: joies02@aol.com

Resources & References:
Wikipedia
Kelly Miller from AARP
Merriam-Webster



**Project Director
Charlene Law**

I want to thank all members who donated candy or money for the children at Oklahoma School for the Blind and Oklahoma School for the Deaf. At District II Leadership I received \$106.00 and a bag of candy. I will be collecting money at District IV, III and V.

Oklahoma School for the Deaf Tour and District IV meeting will be held at the school on October 2, 2010. The school will be holding a home game we are invited to stay for the game.

Some members have notified me of their choices for sponsoring children at both schools. If you have not done so yet, or have never sponsored a child, now is the time, you will truly be blessed. You can contact me by phone at 918-266-0185 or 918-629-4990 or email at cjl41968@yahoo.com or projectdirector@oklaesa.org. Mailings address 25206 S Shepherd Dr, Claremore, OK. Sponsor forms are available on the Oklaesa.org website.

I will be asking for donations to help with Christmas Gifts for the children that are not sponsored, so no child is forgotten. Keep the children in your plans when shopping for Christmas. It is really not that far away and will be here before we know.

Don't forget your donations to State Project, I want to report good numbers in April to meet the needs of the schools.

Thank you,
Charlene Law
State Project Director

**Petticoat Journal
Mary Adams**

Thanks again for getting your PJ articles to me on time. The deadline for the December/January Petticoat Journal is November 5. You can email your articles to wr_meadams@hotmail.com or pjeditor@oklaesa.org or send them by snail mail to 12901 E 590 Road, Inola OK 74036.



**Junior Past President/ Disaster Fund Chair
Deb Hughes**

My mailbox is empty! I am checking every day anticipating your donations to the ESA Disaster Fund. Please overflow my mailbox with your checks.

We certainly want to have ESA funds available for any ESA member should a catastrophic need occur. Presently we have one application that is in process for payment.

I want to challenge you to step up to increase our OK donations. It is going to take all of us working together for this to happen.

At each District Leadership Meeting, I have shared simple ideas for each of us to boost our OK Disaster Fund donations to the next level. I will also travel to your chapter meeting to bring a program on the Disaster Fund, contact me to schedule the date.

Remember ESA members are here to assist you, financially and to reach out in support like a good friend. Contact me for an application form and any questions. The ESA Disaster Fund is available to you.

Please send me your donation checks made payable to ***ESA Disaster Fund***.

Disasters don't wait. Let's be ready.

**District II
Nellrita Barrick, Coordinator
"ESA . . . Footprints of Leadership"**

Jacque's State Leadership Seminar was a hard act to follow. But the very next week, District II came through with an outstanding leadership meeting in Clinton. The program was given by local Sherry Boyles and her sisters, Judy Carter of Edmond and Darla McCormick of Scottsdale, AZ. Based on a book for the business world, Soup by Jon Gordon, the trio designed their presentation, "Who's Stirring the Pot?" in a skit format taking place in Grandma's Soup House. Grandma, Ms. Custer, focused on stirring the pot as she added various ingredients. Recently named CEO of the failing Soup, Inc. Nancy, played by Ms. McCormick, reached out to Grandma for tips on the success of her soup and daily lines of customers. Ms. Boyles, as narrator, referred to grandma's special ingredients as being true in business and in every aspect of life. She quoted Gordon as saying, "Every day you are stirring the pot of life and the most important ingredient you can put into your soup is you. Your love, optimism, trust, vision, communication, authenticity, appreciation and passion make life delicious and the relationships you create at work and at home determine the substance and quality of your soup." As Nancy followed grandma's recipe of ingredients, and to reinforce her successful leadership, she handed out a wooden spoon to every employee. Ms. Boyles added, "that by taking these steps, instead of just one stirrer with one spoon you create a team of pot stirrers all stirring the pot with a shared vision and purpose." She reminded the ESA'ers that to be a great organization that everyone should pick up the wooden spoons at their individual settings and remember to stir the pot. She concluded by saying, "If they did it (stir) together and poured their heart and soul along with the mentioned ingredients into making a great soup, then (ESA) would accomplish amazing things. (cont. pg. 10)

In the absence of president, Jacque, whose husband, Ron, passed away earlier that morning, Gwynn Nell Swanson, 1st vice president, presented Chapter Recognition Certificates to deserving District II individuals.

Aletha Bolt announced that the "Give Thanks.Walk" is to be held the first time in OKC at the Penn Square Mall on Sat., Nov. 20th. She encouraged teams to be formed by ESA and non-ESA participants, get sponsors and help support the Kids of St. Jude.

Charlene Law, state project chairman, spoke of the holiday treat bags to be prepared for students at OSB and OSD. By passing the hat (bowl) \$101.00 was donated by attendees.

Deb Hughes, Disaster Fund Chair, addressed the needs of giving monies and made suggestions of various means of the individual's saving and donating, e.g., Dimes for Disaster.

Cathy Holsted, Dist. II Treasurer, gave a report on their scholarship project. From the luncheon and silent auction, \$600.00 was added to the scholarship funds.

Sylvia Ochs, vice coordinator, conducted the business meeting as reports were given by district and state officers/chairman.

Nellrita Barrick was awarded special recognition by Aletha Bolt for her leadership and coordination of education and fundraisers for St. Jude children's Research Hospital in 2009-2010. Aletha said, "Nearly one-half million dollars was raised during Nellrita's term, putting Oklahoma in the Top Ten."

Entertainment was interspersed throughout the day. Following the American flag and Oklahoma flag salute, George Barton played the National Anthem and 'America' on his saxophone. Tillie's Back! Prior to lunch, Tillie, a.k.a. Linda Southerland dressed in her poodle skirt and pony tail, shared some fun stories that supposedly happened to her earlier in the day at her eatery. Tillie made her first appearance last spring at the ESA State Convention in Tulsa. Following the hot luncheon, the group was entertained by errrrr Vegas Stars: Tony Orlando and Dawn as they performed 'Knock Three Times' and 'Tie a Yellow Ribbon.'

Ramona Paine-Means gave Thoughts to Travel By that she titled, "Footprints & Heartprints Are Forever." She closed with the thought by Flavia; "Some people come into our lives and quickly go -- Others stay for a while, leave footprints on our hearts and we are never, ever the same."

The next District II meeting will be in Guthrie on March 26, 2011, at the R & R Railroad Restaurant.

Chapter and cities/towns represented at the meeting were Alpha Nu, Arapaho; Beta Psi, Clinton; Beta Gamma, Tulsa; Beta Zeta, OKC; Delta Chi, Midwest City; Delta Kappa, Norman; Epsilon Kappa, Hominy; Gamma Delta, Tulsa; Gamma Zeta, Edmond; Kappa Theta, Guthrie; Theta Tau, Kingfisher and Zeta Gamma, Shawnee.

**District III
Rosemary Benning - Coordinator**

By the time you read this, District III Leadership will be over. I hope everyone who attended had a good time and enough to eat.

Darlene and her Kappa Alpha sisters did an excellent job getting the food out for us to enjoy. The Tulsa Area Council came through with excellent food (as usual). I hope you enjoyed the games and were glad you came.

Since this is written before Leadership, I know Donna's silent auction was a success as usual. Chapters please send your District dues of \$10.00 to Debby Thompson, Treasurer, 15358 East 91st St. North, Owasso, OK 74055.

District III would like to send our deepest sympathy to Jacque and her family. If there is anything I can do or anyone in District III, please let us know.

**District IV Coordinator
Nancy Baucom**

Thank you everyone that came to our leadership meeting last month. I hope you enjoyed it.

District IV's fall meeting and the State Project Tour will be October 2, 2010 at the Oklahoma School for the Deaf in Sulphur. Registration will begin at 9:30 AM with the meeting starting at 10:00 AM. It's nominating committee time!

Please come and join other ESA sisters from across the state in visiting with our adopted students and touring the school.

I look forward to seeing all of you there!!!



**District V Coordinator
Jeanne Meyer**



Today's Gonna Be A Good Day...Because of ESA

The District V Leadership will be held September 25, 2010 in Eufaula, Oklahoma at the Bridgeport Dunes Condominiums Clubhouse. It is off Texanna Road which is the exit for Eufaula State Park.*

Registration is \$10 and will start at 9:00 a.m. The Seminar will be held from 9:00 a.m. till 2:30 p.m. and will include a wonderful salad luncheon prepared by our hostess chapters Beta Iota, McAlester and Gamma Kappa, Checotah. In addition to our special Leadership Keynote speaker, workshops on ESA Foundation Scholarships, chapter officer information, and our District V Project, we are inviting the mayors of District V to be our special guests to give us some insight into their communities and we hope to give them insight into what ESA is all about.

Come join us for a good day with ESA sisters sharing fun, food and a fantastic insight into the communities where ESA chapters live.

Jeanne Meyer,
District V Coordinator

*** Driving Directions:**

Take Highway 69 toward Eufaula/Checotah. Then take the Texanna/150 exit, Turn west. Then turn left on Frontage Road (almost immediately in front of the Albert's One Stop), then immediately turn left on Bridgeport Road. Follow the road to the dead end (you will pass North Fork Baptist Church and North Fork Auto Repair) and turn right. Follow Bridgeport Road through a residential community to the fork, take the right fork and follow to almost the end, The Bridgeport Dunes Condos will be a gated community on the left. The Club House is a large single building on the right. Visitor parking is located on the left just before you get to the Clubhouse.

**Chaplain
Vivian Gibson**

The following cards were sent:

Sympathy is extended to our State President, Jacque Edwards on the loss of her husband Ron, Shelly Labus, the loss of her father and Brittany Labus, the loss of her grandfather. Thoughts are with Wanda Morrow and her family. Her husband, Kenneth is gravely ill. Kenneth is in a Nursing Care facility under hospice.

Get Well Cards

Nellrita Barrack - Surgery- Ureter cancer

Patsy Timmons - surgery for breast cancer

Ruth Thompson - Gall bladder surgery

Please keep these families in your prayers.

Congratulations to Mozelle, Delta Kappa, Norman and H. E. Smith on the birth of their 3rd great grandson. Ethan Joseph was born August 30, 2010; weighed 7 lbs. 10 oz. and 19 inches long.

Vivian Gibson, State Chaplain

**Circle of Life
Amber J. Alexander**

I would like for everyone to mark a few dates on their calendar. First of all, we will be taking a trip to Memphis to tour the campus of the St. Jude Children's Research Hospital. We will leave the afternoon of Thursday, October 21, and return on Saturday, October 23. Please email me at amberjeanhatco@hotmail.com to request itineraries and hotel information. Please let me know as soon as possible if you plan on attending. I encourage as many of you to go as possible. I am so excited about getting to tour the hospital and I think I have some pretty fun activities lined up. So, please make an effort to come join the fun. I have sign-up sheets and you can also contact me by email or phone to reserve your spot on the trip.

Next, mark Saturday, November 20, as the date for the Give Thanks. Walk. This year is going to be a special year because we not only have the Tulsa Walk, but an Oklahoma City Walk was added to the lineup. We need people to start building their teams. We also need volunteers to work registration. So, please contact Aletha or myself if you have any questions or if you would like to volunteer and go to www.givethankswalk.org to register or for more information.

Next, mark Saturday, December 4, as the date for the St. Jude Memphis marathon. Please be aware that registration is open now and if you register please remember to join Team ESA. There is a full marathon, half marathon, or Grizzlies 5K. All three races have been sold out for the past three years so don't delay registering. Go to www.stjudemarathon.org to register or for more information. (cont. pg. 14)

Finally, it's time to Up Your Game for St. Jude with an ESA Bunco event. We would like to designate the month of January for Oklahoma ESA Chapters to host their St. Jude Bunco events. For example, Kappa Theta is planning to host a chapter social with 12 ladies. Each will bring \$20. There will be food served and the \$20 will be their donation. They will have prizes for most Buncos, most wins, and most losses. Don't worry if your Bunco event isn't something that's spectacular or over-the-top. As you know every penny counts for St. Jude and what better way to raise money than to have fun doing it. What's that?...you don't know how to play Bunco or how to plan such an event. No worries. The Tulsa Area Council has this event perfected to almost an art. I'm sure one of those ladies would be more than happy to offer you some advice and some pointers. Also, you can go out to the ESA International website and they have several pointers for hosting an ESA Bunco event. Or...you can contact me and I would be more than happy to put together a packet of information for you. Also, as always, please let me know of any St. Jude events you are planning. I would love to come be a part of your event. Thank you!



**Contest Chair
Dr. Billye Peterson**

For those who missed the State Leadership, we had to take care of a little business regarding the Outstanding Youth contest. It seems that IC did NOT stop having the Outstanding Youth contest as we had previously thought, so we voted to follow the IC guidelines for this contest rather than make it exclusive to the State of Oklahoma.

I hope everyone will enter all the contests—it makes convention so much more fun!

Dr. Billye Peterson
Contest Chair
405.812.0138
billyepeterson@gmail.com

**Convention Chair
Ramona Paine**

Kappa Theta, Theta Tau, Beta Zeta, Beta Psi, Gamma Zeta, Omega Pi, Sigma Chi and Zeta Gamma invite you to the 2011 Oklahoma State Council Convention "Rock 'n Roll with ESA" on April 29, 30 and May 1, 2011 at the Clarion Meridian Hotel and Convention Center in Oklahoma City.

We have planned a lot of activities and fun events for you. There will be workshops and special entertainment.

Convention 2011 is having several fundraising activities throughout the year. We are having the 50/50 jar, charms for \$6.00 and a grocery raffle for \$250.

Get your registration in soon!!!!

Convention Registration Form and hotel information is elsewhere in this issue.

Express yourself and tell all the others how you feel, with an ad in the 2011 Convention program.

Chapters, businesses or personal ads are welcome!

Send your ad along with payment to:

Lola Jaegers
2011 Program Chairman
13 Northridge
Shawnee, OK 74804

Cost of ads are ¼ page-\$25; ½ page-\$50; ¾ page-\$75 and full page \$100.



**Diana Chair
Joy Agan**

When considering a Diana in your chapter you will want to visit the Okla. ESA web site. Go into the contest area. You will find on the left of this site, the guidelines for choosing your Diana and on the right side of this contest area you will find the judging sheets. These forms will help in searching for your Diana. You will need to copy them for your use.

This is a rewarding entry. You may find a wonderful lady, you may not know and one who is dedicated to help the lives of those in your community.

Start now on your search and start putting your Diana packet together, so you can get everything you need for your entry. Deadline is March 1, 2011

**Easter Seals Chair
Marcie Lucas Ellington**

Please remember to send all of your Easter Seals and Camp Hope donations through me to make sure we get state credit for Oklahoma. I copy the checks and attach a letter of explanation then send it on to the appropriate office.

I got to visit the OKC Easter Seals campus. Your donations for "Secret Sister" gifts are very welcome, but they need Bingo prizes for the Adult Day Center (men and women). Wal-Mart gift cards were a great idea! You may mail those to me and I'll drive them up there. If you'll include a note with the name of your Secret Sis and her special occasion, I'll send a card to notify her that she has been honored in this way.

For example:

Dear (Secret Sis Name)

It is my pleasure to let you know that your State Secret Sister has made a donation to Easter Seals in honor of your birthday. I hope you enjoy the day.

Marcie Ellington – Oklahoma Easter Seals Chairman

Thanks bunches – Marcie Lucas Ellington

**Membership Chair
Mary Johnson**



It's already time for a brief report to the Membership Committee, which by the way is each and every one of you. It is amazing what you can do with "non-existent" authority when you use your imagination isn't it?

Anyway, what fun I've had! I've met so many people and have dabbled in everything from joining a Veterans Day parade planning committee to establishing friendships with some dynamic ESA sisters of Beta Nu in Cadiz, Kentucky. In June, 2010, these ladies sponsored and chartered the first ESA/ELAN chapter in Kentucky and it has already grown to almost thirty members strong. As these young ladies mature and graduate from high school, they will advance in to ESA chapters; being well versed in ESA's mission to serve and already having the foundation of experience and organizational skills to move forward in the continued growth of ESA. Several mothers of the ESA/ELAN chapter have joined the Beta Nu chapter as a result of their daughter's involvement in ELAN. It sounds like a plan for growth doesn't it? It is one that I plan to take before my sisters in Epsilon Kappa #1945 and I am challenging every ESA chapter in Oklahoma to look into sponsoring and chartering a new ESA/ELAN chapter in your area.

I want to thank Gamma Zeta Chapter #3464 in Edmond for the warm welcome they extended to me when I invited not only myself, but Joyce Whitewing of Epsilon Kappa #1945 and our friend and ESA prospect, Cathy Spencer to their salad dinner. We had a lovely time!

Finally, as Membership Chairman, I want to give special recognition to two chapters that I have heard wonderful things about. HATS OFF to Beta Phi Chapter #0485 in Cherokee and Gamma Theta Chapter #3102 in Texhoma. You're doing a great job!

Remember...**WE ARE ESA PROUD!**

**Outstanding Youth Chair
Carrie Willingham**

Won't you please take time to search for those outstanding youth in your community? Deadlines may seem afar but they really are just around the corner. Time has a way of slipping up on us. So let's get started. We want as many entries as possible this year.

Forms may be obtained from www.oklaesa.org (click on forms at left of screen) or I'll send them "Snail Mail".

My address is: 203 Regency
Clinton, OK 73601

**Philanthropic Chair
Donna Shook**

Hello, Ladies. New changes for all forms, entries, and rules can be found on the internet at oklaesa.org. Again, remember that the new year actually began on April 1st. Chapters can receive additional points if the reports are sent monthly. Please send me a printed copy when you send your forms in. (I sometimes have trouble with my printer.) My address is 13992 S. 261st East Ave., Coweta, Oklahoma 74429. Yes, it is a mouthful.

I am looking forward to hearing from each chapter and will send an e-mail verifying that I have received your report. Again, if you have questions, send them to me at rodshook@windstream.net. Let me know what your chapter is doing.

**Publicity Chair
Joyce Lacey-Kenney**

Besides entering the Publicity Contest for your Chapter, I need articles and pictures for a book to be presented to the State President at convention time. As of this date I have not received any articles or pictures. I would appreciate your help. **A REMINDER** For those Chapters who plan to enter in the PUBLICITY Contest, go to the esaokla.org website and look at the Publicity Contest Judging sheet. This will help you in preparing your book for judging. Looking forward to receiving any kind of mail from you.

**Scrapbook Chair
Kay Bader**

I am surrounded by your beautiful faces, via photos, as I begin working on Jacque's scrapbook: Installation, convention, state meetings, and lots of trips and visits for our busy President who is always "cruisin", taking care of business, and putting smiles on everyone's face. Now I really need to begin hearing from all the chapters to make the scrapbook full and complete. So send me enough photos, news clippings, etc. of your events, meetings, and more (be sure they are labeled) to fill up at least one 12" by 12" page. Also thanks to those who are sharing photos for the meetings I was unable to attend. I am looking forward to receiving lots of mail before March 1. Remember my address is: 5516 Woodmont, OKC 73135.



**2009-2010 AWARDS OKLAHOMA RECEIVED
INTERNATIONAL COUNCIL CONVENTION
BLOOMINGTON, MN - JULY 2010**

Oklahoma ESA members and chapters once again received special recognitions and honors at the International Council Convention this past July in Minnesota. I was extremely honored to represent you, OK ESA Members, to receive these awards.

We had an outstanding year and it takes each and every member and chapter working together to achieve greatness. Thank you one and all. Congratulations to each and every one of you!

ASSOCIATION OF THE ARTS

Division II – Literature

1st Place: Deb Hughes, Beta Gamma Chapter #0391, Tulsa

CIRCLE OF LIFE

Oklahoma is a Top-Ten State \$463,918.40

\$8,526,930 ESA 2009-10 total
\$140+ Million ESA year-to-date total

EASTER SEALS – CAMP HOPE PARTICIPATION

Certificate of Appreciation

Partial Scholarship Donation, Gamma Zeta Chapter #3464, Edmond

Certificate of Appreciation

Full Scholarship Donation, Beta Gamma Chapter #0391, Tulsa

EDUCATION

Top Ten Educational Programs (*alpha order*)

Beta Gamma Chapter #0391, Tulsa, Peggie Sprinkle, Educational Director

Delta Kappa Chapter #3538, Norman, Gwynn Nell Swanson, Educational Director

EDUCATION: Additional OK Chapters Recognized

Certificate of Appreciation

Beta Rho Chapter #1270, Del City, Kay Brader, Educational Director

Certificate of Appreciation

Theta Tau Chapter #4563, Kingfisher, Ramona Paine, Educational Director

ESA FOUNDATION

ESA Foundation 2010 Fantasy Event – Most Funds Raised

1st Place: Oklahoma, \$1,855.00

(2nd Place \$1,320 Arizona, 3rd Place \$1,000 Oregon)

ESA VIRTUAL FOOD DRIVE REPORT

As revealed at IC Convention, July 17, 2010: In 5 months time, ESA members donated **10,574 pounds of food** to local food banks and pantries across the USA. That is over 5 TONS of food donated.

Additional donations valued at **\$32,761** were reported from ESA members to local food banks and food pantries.

ESA members accepted the challenge and exceeded all goals! Thank you for helping our neighbors.

ESSAY “WHAT ESA MEANS TO ME”

“What ESA Means To Me” Award – Member of Less Than One Year

1st Place: Brittany Labus, Kappa Theta Chapter #5414, Guthrie

“What ESA Means To Me” Award – Member of More than One Year

1st Place: Deb Hughes, Beta Gamma Chapter #0391, Tulsa

PHILANTHROPIC

Philanthropic – State Hours

2nd Place: Oklahoma, 23,600 hours

(1st place 68,141 hours Texas and 3rd place 23,205 hours California)

WEBSITE

Outstanding State Website

Oklahoma, Aletha Bolt, Webmaster

We know we have an outstanding OK website. Thank you Aletha for your efforts to keep our website updated and always full of helpful resources for all of us.

You may not even be aware there was such an award. The specific judging criteria includes proper use of the Epsilon Sigma Alpha International logo, working links to other sites, site is user friendly for the ease of user and current information, in other words materials are changed on a regular basis.

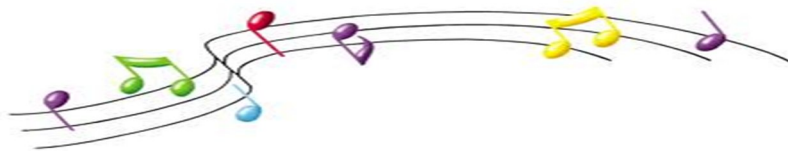
DISASTER FUND

Oklahoma was fourth place with donations of \$4,144.50. Thank you for your contributions to our ESA Disaster Fund, allowing us to assist other ESA members in need.



Thank You.

To all of you
ESA sisters, I appreciate all
of your prayers, cards, emails,
and telephone calls during
my surgeries and recuperation
the 6 weeks in Aug. & Sept.
With each crisis, here came
more cards. Heart Warming!!
ESA Hugs, Nellrita



Thank You

All my precious ESA Sisters, for your cards, e-mails, thoughts and prayers during my surgery and recovery. Your support and encouragement certainly uplifted me, and I am so thankful for all of you. You are awesome purrfect friends!

**With ESA Love,
Patsy Timmons**

Chapter Chatter

Gamma Kappa #4018 Checotah

Greetings from Gamma Kappa, Checotah.

First and foremost we all extend our deepest sympathy and prayers to Jacque, Shelly, Brittany and family on the loss of Ronnie. Hope that you all survived the heat and are looking forward to fall and new ESA ventures. President, Jhonnie has a busy fall planned for Gamma Kappa. We cordially invite you to attend our annual Chinese Auction fundraising event on November 6 (details to follow). Ruth Thompson is recovering nicely from gall bladder surgery. Many of us are looking forward to the tour of the School for the Deaf and the trip to Memphis and touring St. Jude's. We have several new members who are excited about joining ESA and are anxious to share their talents in an effort to support our benefactors. May we all have the blessings and energy necessary to continue successfully with all our ESA endeavors that will have a positive impact on those less fortunate than ourselves. Hope to see you all at the District 5 leadership on Lake Eufaula. We are ESA – P R O U D!!!

Margaret Kramer

Beta Psi #0498 Clinton, OK

Beta Psi gals had quite a scare as Nellrita's cancer surgery had complications with rapidly falling blood pressure and severe hemorrhaging and had to return for a life or death operation at 4:30 a.m. at Mercy Hospital in OKC. She received 10 pints of blood and 4 units of platelets. We share in her happiness to be near the point of full recovery.

It was a privilege to host the recent District II Leadership Seminar here in Clinton. It was coordinator Nellrita's coming-out party, so to speak. She was able to meet and greet and turned the business meeting over to Sylvia Ochs, vice coordinator. Thanks, for the compliments on our 'West of the Pecos' casserole and choices of dessert. We were very pleased with our ESA sister's attendance from across the state.

Congratulations, Carrie, for receiving the state president's, Jacque Edwards Chapter Recognition Certificate. Once again, we were proud of Nellrita as Aletha Bolt recognized and complimented her at the District II meeting on her leadership as the Circle of Life Coordinator this past year as nearly one-half million dollars was raised for St. Jude's Children Research Hospital.

Doris Cook, Beta Psi president, is ready for the first fall meeting with new yearbooks and a supportive new board. Her theme is "ESA . . Groovin with the 50's."

Beta Psi has two on President Jacque's executive board; Linda Southerland, Recording Secretary and Nellrita Barrick, District II Coordinator. Plus, serving on the general board is Joy Agan, DIANA Chm.; Joyce Lacey-Kenney, Publicity Chm. and Carrie Willingham, Outstanding Youth Chm. Way to go, ladies!

Publicity Chairman

**Beta Rho #1270
Del City**

Beta Rho, Chapter 1070, had its installation of officers on July 26, 2010, at Primo's Restaurant in Midwest City, Ok. Robin Brown from our neighboring chapter of Zeta Gamma in Shawnee performed a lovely ceremony. Those being installed were: June Little, President; Wanda Lucas, Vice President; Ann McCarville, Treasurer; Kay Brader, Secretary; and Virginia Taylor, Parliamentarian. June's daughter and granddaughters were also with us at this special meeting.

Even though Beta Rho does not meet in the summer, we stayed busy! We had volunteers working the golf tournament for Easter Seals as we stuffed bags that would be given to those who were registered. We worked the registration and ran errands as needed. We also helped do a large mailing for Easter Seals; and Gloria Torres, Barbara Eck, and June Little helped with Easter Seals annual "Blast from the Past" event. Mary Keck and several of our other sisters helped out with the St. Jude's Dream Home.

Virginia Taylor serves as Parliamentarian at District IV, and she is an Administrative Assistant for Jacque on the State Board. Kay Brader is the Scrapbook Chairman for State as well as our chapter.

Beta Rho was pleased to have received several awards at the State Convention. We also were pleased that Kay's Educational booklet received an honor both at the State and at International level. On August 24 at Easter Seal's Board meeting luncheon, Beta Rho received a gift as a special thank you recognition for their work done there this year.

Several of our Beta Rho sisters have had illnesses in their families, went through surgeries, lost loved ones, moved, or faced some difficult problems and decisions. But we have held each other up, prayed together, and continue to pull through the anxious moments as we reach out to others with even bigger problems.

Beta Rho will have its first official meeting for this year on September 20 at the home of President June Little. Plans are in the making for a fun-filled, busy, active year in ESA!

Kay Brader

**Gamma Zeta #3464
Edmond**

Gamma Zeta members in Edmond are very busy this fall with three fundraisers planned to help Edmond charities. All involve great food, fun, and fellowship!

The first-ever "Flapjack Breakfast" at Applebee's Neighborhood Bar and Grill will be held Saturday, September 11.

Starting at 6 p.m., Thursday, October 28, is our largest fundraiser of the year-"A Bountiful Harvest", which includes dinner, a silent and live auction, plus a big screen TV drawing. Oklahoma ESA members are welcome to attend the dinner and auction as our guests, but reservations are requested so we can plan adequate tables and food. Please call Ruth Simpson at 562-1138 for reservations and directions to the location no later than Monday, October 25.

The third fundraiser will be Tuesday, November 9, at Fish City Grill, 1389 E. 15th. Street. If you are in the area, stop for lunch and/or dinner, as a percentage of the total days' proceeds will be given to Gamma Zeta for Edmond charities.

We hope to see some of you at the dinner and auction or Fish City event!

Ada Blankenship
Publicity Chairman

Kappa Theta #5414 Guthrie

Greetings to all our ESA sisters. I hope everyone has had a wonderful summer.

State President Jacque Edwards attended International Convention in July in Bloomington, Minnesota. She reported a great time and one of the highlights of her trip was attending the St. Jude Scavenger Hunt at the Mall of America. Shelly Labus also attended and rode a giant roller coaster on the scavenger hunt in order to earn points.

In July our members met at the R & R Restaurant and Event Center for our business meeting. We had as our guest Skyler Zaage who is the granddaughter of our Kappa Theta President Libby Zaage. Skyler was visiting from Texas. We had a guest speaker Betty Dreesen, R.N. who is the coordinator for the "Grandparents Raising Grandchildren" program. Kappa Theta members met on August 9, 2010 at The Stables Cafe for our business meeting. We had a guest speaker join us for the evening. Joe McElhaney from the Eagle Ridge Institute spoke to us about what Eagle Ridge does for women in our community and their families. He explained that Eagle Ridge Institute is a structured program where women recover from substance abuse and learn coping skills as well as daily living skills.

Kappa Theta welcomed some of our sisters to Guthrie on August 20th when they came to spend the night for our August Leadership Meeting. State President Jacque Edwards, Libby Zaage and Connie Johnson joined the ladies downtown in a scavenger hunt. Fun was had by all as members learned historical facts about some of our downtown buildings. The ladies went to Braums afterwards for a time of socializing.

August Leadership and shopping on the mall was held on Saturday, August 21st at the R & R event center. Kappa Theta members attending were State President Jacque Edwards, Libby Zaage, Sylvia Ochs, Marie Thomas and Connie Johnson. We are proud of the great job that Jacque did and really enjoyed the day of learning and fellowship with all our sisters!

Sadly on August 28th, State President Jacque Edwards husband Ron passed away in Edmond Medical Center after a brief illness. We ask that you please keep Jacque and her family in your prayers in the days ahead. I know that all prayers are appreciated.

May God bless each of you and we hope to see you soon.

Connie Johnson
Publicity Chairman

Gamma PI #5091 Inola

Gamma Pi's 3rd Annual Bunco Tournament was a whopping success. We had lots of winners and lots of participants having a wonderful 5 hour adventure. We made many new friends. The players were not the only winners. Proceeds were shared by Inola Educational Enrichment Foundation and Inola Round-up Club.

We are now getting ready for our second patio sale of the year. We expect it to be another successful sale. People seem to look forward to our sales.

In October we will have the Fall Carnival. We have games for the young kids to play for just 25¢ per game. There will be a cake walk, Halloween costume contest, King & Queen contest and crowning and as always we will have our Bingo game. The Carnival is a lot of fun for the entire family.

Janie Stevens
Publicity Chairman

**Delta Chi #1637
Midwest City**

Maxine was able to attend the I.C. Convention in Minnesota. It was a wonderful learning experience and was able to see Judi York from Jenks win for I.C. Parliamentarian. Maxine roomed with Aletha Bolt from Beta Zeta with Rosalie Griffith and Judi next door.

Oklahoma won several awards and Deb Hughes, Past President, was there to accept them. Maxine was able to attend District II meeting in Clinton and was so happy to see Nellrita conducting the meeting.

Sorry to hear about the death of State President Jacque's husband.

Delta Chi will be having their first meeting after the summer vacation on Sept. 13th, and get back in the swing of things.

Maxine Wheelan
Publicity Chairman

**Delta Kappa #3358
Norman**

Delta Kappa, Norman's first meeting of the year is Tuesday evening, September 7, 2010, under the leadership of Joyce Gibson as President. DK will be planning their year. Betty McCallister, Mary Rohr, Daleene Sumrall, Mozelle Smith, Nancy Buck, Marcie Ellington, Gwynn Nell Swanson, Joyce Gibson and Vivian Gibson attended State Leadership in Guthrie. It was a fun leadership. The chapter participated in a successful shopping on the Mall at Leadership. We have several new philanthropic projects that we will be discussing for this year. Helen Checorski, Karen Nix and the local philanthropic crew have some interesting projects for us. All of the members are getting geared to begin the Christmas wrapping for the McGuire Foundation. and hoping for a good year.

Mozelle Smith, Delta Kappa's Ways and Means Co-chair, is a new great grandmother. Vivian Gibson was surprised with the Robert and Dixie Palmer recognition award at IC Convention. This award was started by her husband, Wilbur and completed by their children.

Vivian Gibson

**Beta Gamma #0391
Tulsa**

Hello in ESA land! We are just getting back from a much deserved break so there isn't too much to report regarding the chapter—we had a little salad supper and played some Bingo to ease into the remainder of the year. Coming up in October we'll be sending notice about a garage sale and we have a birthday to celebrate in November, hopefully there'll be more interesting chapter news to report next time. Many members of our chapter could use your thoughts and prayers now regarding health issues—check out our Oklahoma State Chaplain's reports in recent months for details...

Connie Bartlett

**Gamma Delta #0702
Tulsa**

The sisters of Gamma Delta held a fundraising event on July 10th, 2010. This affair included a garage sale and Lemonade Stand. Cash donations were also accepted. Proceeds of \$440 were raised, and donated to the Firefighters Burn Camp. Gamma Delta also held a "Christmas In July" social on July 9th, 2010. This event included a salad supper and Educational presentation. The evening concluded with a gift exchange between members.

Gamma Delta is also working on several future philanthropic events. These include: attending "St. Jude day" at Chili's Restaurants on September 27th, 2010; attending a tour of the Oklahoma School for the Deaf in Sulphur, OK on October 2nd; and hosting 2 teams for the Give Thanks Walk in November.

Jessica Gresens
Publicity Chairman

**Omega Pi #3832
Tulsa, Oklahoma**

Not too much going on this summer from Omega Pi.. We are just surviving the hot Oklahoma weather and looking forward to the cool fall.

Our social for July was the big TAC Bunco Bash on July 23rd at Highland Park Christian Church. All chapters brought food items, so we were well fed and all had a great time. We had a great turn out and gave the proceeds to Community Food Bank. Some of our chapter ever won some of the numerous door prizes.

August social was at the home of Marge Goodno, "the hostess with the mostest". She had a dinner and swim party. Even our little Miss Lisette was there in her bathing suit. Food and drinks were great. Members all brought sides and desserts for Marge's great grill foods. Believe it or not - the weather even cooperated and it wasn't too hot sitting outside.

We were all sorry to hear about Jackie Edwards' husband passing away and four of our members plan to attend the funeral.

Joan Nightingale
Publicity Chairman



Tulsa Area Council

Members of Tulsa Area Council hosted a Bunko bash on July 23rd, 2010. This was a fundraising event, with proceeds going to the Tulsa Area Food Bank. Over \$800 in cash donations were raised, and attendees brought over 200 pounds of non-perishable food items, which were also donated to the Tulsa Area Food Bank.

Tulsa Area Council members will be hosting District III Leadership on September 11th, 2010 at Highland Park Christian Church in Tulsa, OK. TAC members are planning to attend "St. Jude day" at Chili's Restaurants on September 27th, 2010. Plans are underway for the Give Thanks Walk on November 20th, 2010 at Woodland Hills Mall. TAC members will fill volunteer positions, as well as host teams to walk in the event.

Jessica Gresens
Publicity, Tulsa Area Council



**THANK YOU ESA DAY
WORKSHOP AND TRAINING SESSION
OCTOBER 15, 2010**

I am delighted to announce that ALSAC will be hosting a “Thank You ESA Day” workshop and training session in Dallas , Texas on Friday, **October 15, 2010**. You are invited to this meeting as a member who has helped Epsilon Sigma Alpha raise over 140 million dollars in cash and pledges for St. Jude Children’s Research Hospital .

SAVE THIS DATE

The session will be held at the Holiday Inn Express Galleria at 6055 LBJ Freeway in Dallas . The session will begin at 9:00 a.m. and will end by 3:00 p.m. Lunch will be included for the event. This event is being hosted by ALSAC so there will be no cost to you. This is ALSAC’s way of saying “THANK YOU ESA” and also for helping you to be among the first to know what’s happening at the hospital and to let you know how you can continue to help the children of St. Jude.

Please help us to share this news with your chapter and with other members who you think would be interested in attending. We look forward to seeing many of you in Dallas ; however, space at the hotel is limited. Reservations will be taken on a first come, first served basis, so please let us know that you’ll be joining us as soon as possible to reserve your space.

Again, we hope you’ll be able to join us. Room reservations will be available for those of you who may have to travel a distance at a discounted rate of \$79.00 for a regular room and \$99.00 for a suite. (Please contact the Holiday Inn Express Galleria at 972-404-4500 to reserve a room. Discounted rates will be in effect until September 30, 2010.)

More information will follow. I just wanted you to know about this exciting event as soon as possible.

If you have questions or want to reserve your place at this event, please e-mail Cathy Lyons at cathyl@esaintl.com.

I hope I get to see many of you in Dallas on October 15th. Thanks for ALL you do to create hope for the children and St. Jude Children’s Research Hospital !

Best wishes,



B. J. Clark
Executive Director
Epsilon Sigma Alpha Headquarters
363 West Drake Road, Fort Collins , CO 80526
970-223-2824 Ext. 107
FAX: 970-223-4456
www.esaintl.com

Give thanks. Walk.

St. Jude Children's Research Hospital®

Give thanks. WALK.

Your first step is their first hope.

Start Recruiting Your Team Now!

Help St. Jude fight childhood cancer.

Saturday, November 20, 2010

5K Walks

**Penn Square Mall
Oklahoma City, OK
Registration 8:00 AM
Start 8:45 AM**

**Woodland Hills Mall
Tulsa, OK
Registration 8:00 AM
Start 8:45 AM**

Register today for the 5K walk of your choice at www.givethankswalk.org.

For more information, contact Mandy Ward at 405-217-9200 or
mandy.ward@stjude.org.

What is the Give thanks. Walk.?

On Saturday, November 20, 2010, St. Jude supporters in 60 communities across the country will join together to participate in the *Give thanks. Walk.*, an exciting family-friendly 5K walk to raise money for the children of St. Jude.

Participants are encouraged to form walk teams with their friends, family and co-workers and recruit sponsors to make donations in support of their efforts and the life-saving work done at St. Jude Children's Research Hospital.



Give thanks for the healthy kids in your life, and give to those who are not.

www.givethankswalk.org

©2009 ALSAC/St. Jude Children's Research Hospital



State: EDUCATIONAL REPORT FORM

Chapter Name and Number: _____
City: _____ **Meeting/Presentation Date:** _____
Yearly Theme: _____
Topic of this Program: _____

METHOD OF PRESENTATION (Check all that apply)

- Member's Oral Report (name)** _____
- Guest Speaker (who/title)** _____
- Visual Aid Program (kind and type)** _____
- Field Trip (where)** _____
- Reference Listing (book or magazine)** _____
- Other (explain - internet, pamphlets, etc.)** _____

SUMMARY: (Briefly summarize the program and attach a more complete narrative or outline stating all major points emphasized so the program can be fully understood.)

COMMENTS BY THE EDUCATIONAL CHAIR: (Value to chapter/community, general comments about the presentation and chapter discussion.)

CHAPTER EDUCATION CHAIR:

Name: _____
Address: _____
City: _____
State and Zip Code: _____
(Revised March 2003)

**PLEASE SEND TO:
STATE EDUCATIONACHAIR:**

Name: Joyce Gibson
Address: P.O. Box 179
City: Norman
State and Zip Code: OK 73070
Email: joies02@aol.com
Or: secondvp@oklaesa.org



**OKLAHOMA STATE COUNCIL
NOMINATION FORM
FOR 2010-2011 OFFICERS**

Please complete the nomination form and submit to the 1st Vice-President before March 1, 2011. All candidates must send their written consent, qualifications and a picture to the 1st Vice- President **BEFORE** March 1, 2011. The candidates for state offices will be presented at the March State Council meeting and their qualifications and picture will be published in the April/May issue of *The Petticoat Journal*.

SECOND VICE PRESIDENT

Name _____ Chapter _____
Town _____ Acceptance Attached _____
Nominee has been notified of nomination _____ Yes _____ No

RECORDING SECRETARY

Name _____ Chapter _____
Town _____ Acceptance Attached _____
Nominee has been notified of nomination _____ Yes _____ No

TREASURER

Name _____ Chapter _____
Town _____ Acceptance Attached _____
Nominee has been notified of nomination _____ Yes _____ No

PARLIAMENTARIAN

Name _____ Chapter _____
Town _____ Acceptance Attached _____
Nominee has been notified of nomination _____ Yes _____ No

PROJECT DIRECTOR

Name _____ Chapter _____
Town _____ Acceptance Attached _____
Nominee has been notified of nomination _____ Yes _____ No

PETTICOAT JOURNAL EDITOR

Name _____ Chapter _____
Town _____ Acceptance Attached _____
Nominee has been notified of nomination _____ Yes _____ No

Nominating Chapter Name & #: _____ **City:** _____
Contact: _____

Mail to: Gwynn Nell Swanson
2406 CR 1260
Blanchard, OK 73010
(405) 485-2921

Email: gnswanson@pidi.net
Or firstvp@oklaesa.org

Oklahoma State Council 68th Annual Convention			
“Rock n’ Roll with ESA”			
April 29, 30 & May 1, 2011			
Clarion Meridian Hotel & Convention Center – 737 S. Meridian - Oklahoma City			
Phone: 1-800-784-7830 or 405) 942-8511 – Registration Deadline April 15, 2011			
MEMBER NAME:		MEMBER NUMBER:	
ADDRESS:		CITY, STATE, ZIP:	
PHONE:	FAX:	EMAIL:	
CHAPTER NAME:	CITY:	CHAPTER NUMBER:	
CHECK ALL THAT APPLY:			
<input type="checkbox"/>	CHAPTER PRESIDENT	<input type="checkbox"/>	1ST TIME CONVENTION GOER
<input type="checkbox"/>	EXECUTIVE BOARD MEMBER	<input type="checkbox"/>	GENERAL BOARD MEMBER
<input type="checkbox"/>	CURRENT/PREVIOUS IC OFFICER	<input type="checkbox"/>	CURRENT/PREVIOUS ESAF BRD
<input type="checkbox"/>		<input type="checkbox"/>	2010/2011 PLEDGE
<input type="checkbox"/>		<input type="checkbox"/>	SOONER SENIORETTE
<input type="checkbox"/>		<input type="checkbox"/>	GUEST
SPECIAL DIET MENU/MEDICAL REASONS ONLY** CONTACT: ** RAMONA PAINE –Convention Chair 580) 242-0741 604 W. Wheat Capital Rd., Enid 73701 (Ramona.Paine@gmail.com)			
<u>MEN’S REGISTRATION:</u>			
NAME:		HUSBAND/ESCORT OF:	
<u>DESA/ELAN REGISTRATION:</u>			
NAME:		ESA MEMBER/CHAPTER:	
<u>GUEST REGISTRATION:</u>			
NAME:		GUEST OF:	
CHECK ALL THAT APPLY			
<input type="checkbox"/>	MEMBER’S FULL REGISTRATION FEE POSTMARKED BY APRIL 15, 2011 includes Friday night mixer, general assemblies, workshops, Recognition Luncheon, Banquet & Brunch		\$85.00
<input type="checkbox"/>	MEN’S REGISTRATION FEE includes Friday night mixer and Banquet		\$40.00
<input type="checkbox"/>	DESA/ELAN REGISTRATION includes Friday night mixer, general assemblies, workshops, Recognition Luncheon, Banquet & Brunch		\$85.00
<input type="checkbox"/>	BANQUET GUEST FEE		\$40.00
<input type="checkbox"/>	LATE FEE		\$25.00
<input type="checkbox"/>			
TOTAL AMOUNT ENCLOSED			



Enclose Check Payable to: 2011 ESA State Convention Fund
Mail Registration form and payment to: Mary Ann Jones, Registration Chair
 536 N. Beard MaryAnn74801@aol.com
 Shawnee, OK 74801 Phone: 405) 273-3459

CANCELLATION: If you find it necessary to cancel this registration, the full amount less a \$15.00 processing fee will be refunded if your written cancellation is postmarked no later than the April 15, 2011 deadline. Registrations postmarked after April 15, 2011, will be assigned seating where vacancies exist. We cannot guarantee that late registrants will be seated with their chapters after April 15, 2011.



BY CHOICE HOTELS

CLARION MERIDIAN HOTEL & CONVENTION

737 S. Meridian Ave. (I-40 & Meridian)
Oklahoma City, OK 73108



April 29, 30 and May 1, 2011

For Reservations call:
(405) 942-8511 * (800) 784-7830

Reservations Online

Visit our website www.clarionokc.com

Click on **Special Rates**, and then **Group Reservations**

Enter group password: **grp10110** to proceed
and mention

EPSILON SIGMA ALPHA

for the

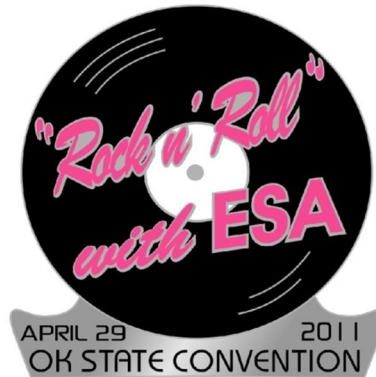
Convention room rate of \$99 plus tax per night

Parking is Free

Free Deluxe Continental Breakfast

RESERVATIONS MUST BE MADE BY APRIL 1,

Convention Program Ads



Reserve your space now for a 2011 Oklahoma State Convention program ad! It is never too early to send in your camera-ready copy for this great program.

Space available goes for the bargain prices as listed:

Full page	- 100.00
$\frac{3}{4}$ page	- 75.00
$\frac{1}{2}$ page	- 50.00
$\frac{1}{4}$ page	- 25.00
Business card size	- 12.50

Honor your chapter, your secret sister, your boss, the elected Board members – you can put a smile on anyone's face with a convention program ad.

AD DEADLINE - APRIL 1, 2011

Send your ad to: Lola Jaegers
13 Northridge
Shawnee, OK 74804

Epsilon Sigma Alpha
INTERNATIONAL®

Oklahoma Vest Order Form

Merchandise is purchased through the official ESA Merchandise Office.

Contact Name: _____

Chapter: _____

Ship to address: _____

City: _____ **State:** _____ **Zip:** _____

Contact Phone: _____

Email Address: _____

The vest is a high quality twill fabric that is soil and wrinkle resistant. It is a **black** two-pocket vest with a four-button front. Price for vest includes embroidery of the **ESA** script logo on the left chest and **Oklahoma** on the right chest, both in silver thread.



OPTIONAL ADDITION: If you would like to add your chapter name below **Oklahoma** please add \$2.50 to the cost of each vest.

Chapter Name: _____
(Please print clearly in all capital letters)

<u>SIZE (Chest size)</u>	<u>\$ PRICE</u>	<u>QUANTITY</u>	<u>TOTAL \$</u>
Small (30-32)	\$19.00		
Medium (34-36)	\$19.00		
Large (38-40)	\$19.00		
XL (42-44)	\$19.00		
2XL (46-48)	\$19.00		
3XL (50-52)	\$21.50		
4XL (54-56)	\$21.50		
5XL (58-60)	\$23.00		
Merchandise Total			
Add Chapter Name \$2.50 per vest			
Shipping & Handling \$1.00 per vest			
Grand Total			

Checks payable to: ESA Merchandise

Phone: 918-269-3857
Email: debokesa@hotmail.com

Mail form & payment to:

Deb Hughes, OK vests
2817 S. Hudson Avenue
Tulsa, OK 74114

BUSINESS CONDUCTED VIA E-MAIL - August 5, 2010

President, Jacque Edwards proposed a \$75.00 donation from the monies earned in interest from the CD be contributed to Marilyn Harmon's charity, Sole Mates. Her cause is to help purchase school shoes for under-privileged children. Marilyn Harmon is the Guest Speaker for the Leadership Seminar to be held on August 21, 2010.

A motion was made by Gwynn Nell Swanson, seconded by Dr. Billye Peterson to contribute \$75 to Sole Mates to purchase school shoes for under-privileged children. President, Jacque Edwards called for a vote on the motion.

MOTION CARRIED.

**Linda Southerland
State Recording Secretary
2010-2011**

**Epsilon Sigma Alpha International
August Leadership Seminar
Executive/General Board Meeting
August 21, 2010**

The Executive and General Board Meeting was called to order at 9:41 am by President Jacque Edwards, who requested that all cell phones be turned off or set to vibrate.

State President Jacque Edwards asked those present to stand and join her in the Opening Ritual. Chaplain Vivian Gibson led the members in the Pledge of Allegiance.

Jacque introduced Guthrie Mayor Chuck Burtcher who welcomed ESA to Guthrie. On November 16, 1907, Oklahoma was declared a state by then President Theodore Roosevelt with Guthrie as the First State Capital. It was to remain the capital until June 11, 1910 when Governor Haskell called for an early statewide election, and by a majority vote, Oklahoma City was selected as the capital. Mr. Burtcher gave a very informative welcome.

Chaplain Vivian Gibson gave the devotional for the day "Nails in the Fence".

President Jacque announced that today's agenda, forms, information concerning the Hope for Hero's program that will continue in November, information on the ESA IDOL talent and the 2011 IC Convention will be in the Leadership folders provided to registrants.

First time Leadership Seminar attendees were requested to stand and introduce themselves. Six first time attendees were acknowledged by President Jacque Edwards. One DESA was also in attendance. Jacque then announced that attendance will be taken from the registration sign in and be attached to the minutes.

The committee to read the minutes of today's meeting is Lora Thompson, Chairman, Connie Johnson and Peggie Sprinkle.

The committee to read the June 19, 2010 Executive and General Board meeting and the State Council meeting was Chairman June Miller, Amber Alexander and Margaret Kramer. June Miller reported that the minutes were correct as printed.

First Vice-President Gwynn Nell Swanson reported on the nominating committee and asked that anyone interested in running for a State Office or to be on the General Board contact members of the nomination committee and that there is a nomination form on page 37 in the July/August Petticoat Journal and on the Oklahoma ESA website. She also pleaded with members to attend their District meetings. Date of meetings are also in the PJ and on the website.,

Second Vice-President Joyce Gibson gave a mini-educational covering "Advanced Directives".

Robbin Brown, Outstanding Chapter contest chair, passed out a new judging sheet for the contest.

State Project Director, Charlene Law gave a report on the OSD Tour. She stated that the tour would be on October 2, 2010, but it is not the homecoming football game.

Corresponding Secretary, Shelly Labus was absent but a list of regrets were placed on tables for informative purposes (list attached).

Treasurer, Tina Davenport-McKamie, gave the treasurer report as of August 21, 2010. This report will be placed on file with the minutes of the meeting.

Petticoat Journal editor, Mary Adams, reminded everyone that the articles for the next publication should be submitted by September 5. She also stated that the articles should not be longer than ½ page and that due to rising cost of making copies and postage, the board might have to look into raising the cost of a hard copy PJ for next year.

President Jacque reported that incorrect information concerning the IC Outstanding Youth contests was given during the June Council meeting. Oklahoma now has two options if we want to comply with IC. 1) vote to rescind all the changes we proposed in June concerning the State Jr. and Sr. High Outstanding Youth contests or 2) vote to leave it as we voted in June and risk having to possibly make two separate entries if we want our entries to adhere to IC Guidelines and be considered for IC judging. Contest Chairman, Billye Peterson, stated, "I move we rescind all the changes to the State Jr. and Sr. High Outstanding Youth contests and follow the IC Youth contest guidelines. Motion was seconded by Linda Southerland, Beta Psi Clinton, and a vote was called. MOTION CARRIED.

Reports were given on the health issues of Nellrita Barrick, Beta Psi Clinton, and Patsy Timmons, Nu Delta Muskogee.

Executive and General Board Meeting was adjourned at 10:25 am.

Submitted by:
Linda Southerland
State Recording Secretary
2010-2011

**Epsilon Sigma Alpha International
Oklahoma State Council
Leadership Seminar
August 21, 2010**

The Oklahoma State Council Leadership Seminar was called to order at 10:30 am by President Jacque Edwards, who requested that all cell phones be turned off or set to vibrate.

A report was given by Membership Chair, Mary Johnson. She reported that because increase in membership is so important, that she is selling TShirts that say "We Are" on the back and "ESA Proud" in the outline of the state of Oklahoma. Colors are Yellow shirts with Blue wording and Blue shirts with Yellow wording.

Nancy Buck, Music Entertainer Chair, gave a trivia quiz on music hits in the 1950's. It was a fun trivia game enjoyed by all.

President Jacque read a statement thanking the Oklahoma State Council for giving her the honor of representing Oklahoma at the IC Convention in Bloomington, MN in July where she attended the memorial service conducted by IC Chaplain, Judi York; she participated in an impressive Flag Ceremony carrying the Oklahoma Flag and conducted a portion of the Central States workshop. She also reported that Judi York was elected to the office of IC Parliamentarian.

A special IC Award (Dixie Palmer Award) was presented to Vivian Gibson by Cathy Holsted.

Jr. Past President, Deb Hughes presented Oklahoma IC Awards from her year as State President (list of awards attached to minutes).

Spirit Awards were presented to Judy Cravens; Sherry Green; Judi York and Vivian Gibson by President Jacque.

Vivian Gibson, State Chaplain gave an update on members in need of prayers.

The 2011 Convention report was given by Ramona Paine-Means, 2011 Convention Chairman.

Introductions were made by President Jacque.

The Sooner Seniorettes proudly nominate Judi York for the IC office of her Choice for 2011-2012. Bunnie Sullins moved she be elected. Coming from a committee, no second was needed. MOTION CARRIED.

Guest Speaker Tamra Gilkey gave an outstanding program covering the Ronald McDonald House in OKC. Following the program, President Jacque presented a box of pop top rings brought by Oklahoma ESA Members to Mrs. Gilkey and a small gift of appreciation.

Chaplain, Vivian Gibson gave the blessing and lunch was served. Following lunch, workshops on making tissue paper roses on a hot pink straws donated by Braums and a new team building exercise called Jenga was conducted by Rosalie Griffith.

A short skit involving contests was presented by chairman of contest categories and Dr. Billye Peterson, Contest Chair.

Contest Chairman, Dr. Billye Peterson made the following statement: "Upon recommendation of the Executive and General Board, I move that we rescind all the changes to the State Jr. and Sr. High Outstanding Youth contest and follow the IC Youth contest guidelines. Coming from a committee, no second is required. Vote was called, MOTION CARRIED.

Guest speaker, Marilyn Harmon of Blackwell, with Sole Mates gave a program on how the charity got started. President Jacque presented numerous pairs of shoes donated by ESA members and a cash donation from the Oklahoma State Council. A small gift of appreciation was also given.

Aletha Bolt, Webmaster spoke concerning the Website and stated that she would help anyone who was having trouble.

Circle of Life Chairman, Amber Alexander, reported that she has planned a St. Jude tour for October 21-23, 2010. She also reminded everyone about the Give Thanks Walk to be held in Tulsa and OKC on November 20, 2010.

She also gave information concerning the Memphis marathon and the January ESA Bunco Events. Contact Amber for further information.

Leadership Seminars for District II, III, IV, and V were announced.

Deb Hughes reported that over 10,000 lbs of food was given during the virtual food drive.

President Jacque Edwards announced that the November Council meeting will be on November 13, 2010 at Guthrie.

Door Prizes were provided by District II Chapters and passed out.

Raffle drawings were conducted and the meeting adjourned with members reciting the Closing Ritual at 2:32 pm.

Submitted by:
Linda Southerland
State Recording Secretary
2010-2011