



**Oklahoma State Council  
Petticoat Journal  
2011-2012**



**Gwynn Nell Swanson  
President**

**Volume 60 Issue 3  
December/January**

# Table of Contents

<u>Page</u>	<u>Contents</u>
2	President
4	1 <sup>st</sup> Vice President/Nominating Committee Chairman
4	Treasurer
5	Parliamentarian
6	Project Director
7	Junior Past President
8	District III Coordinator
8	Chaplain
9	Convention Chairman 2011
10	Contests
12	Circle of Life: ESA for St. Jude's
13	ESA Foundation
14	Outstanding Youth
14	Philanthropic
15	Chapter Chatter
21	Oklahoma State Council: November Executive/General Board Meeting
22	Oklahoma State Council: November State Council Meeting
25	2012 Convention Center Hotel
26	2012 Convention Program Ads
28	2-12 Convention Registration Form
29	Calendar of Events



## Dancing with your Oklahoma State President Gwynn Nell Swanson



Can't believe this year is almost over! Where has the time gone?

**September 10<sup>th</sup>** – Attended the District IV Leadership in Midwest City. Ellen Clark had a wonderful meeting. She had a special guest from the Midwest City Police Department that gave us many tips on safety.

**September 17<sup>th</sup>** – Met with Billie Peterson at the Choctaw exit on I-40 and we traveled to Eufaula for the District V Leadership. The Leadership was conducted by District V Coordinator Ruth Thompson. Our speakers for the day informed us about how important it is to save our water. Although we think that with all the lakes in Oklahoma, we would have plenty of water. It was very surprising to find that the water in the eastern part of the state is in danger of being purchased by OKC, which will drain the lakes.

**September 18<sup>th</sup>** – Nancy Buck, Robbin Brown, and I traveled to Clinton for a play sponsored by the Clinton Red Hat ladies. It was very enjoyable and of course we got to visit with our Clinton ESA ladies.

**September 21<sup>st</sup> – 24<sup>th</sup>** – I went with my church ladies on the annual Ladies Trip. We went to Kansas City, MO this year. I invited Wanda Morrow and Nancy Buck to go with me and we had a wonderful time.

**September 28<sup>th</sup>** - I help with the Wednesday night meals at my church every 4-5 weeks. We arrive about 11 am and cook all day and I usually get home about 7-7:30 pm. It is a wonderful service for the church members.

**October 3<sup>rd</sup>** – Attended our Delta Kappa chapter October business meeting.

**October 8<sup>th</sup>** - Attended the District IV meeting and the OSD tour in Sulphur. Got to meet our adopted kids and had a very delicious Mexican lunch. At the District IV meeting they had several baskets and items for auction.

**October 20<sup>th</sup>** – Meet at the Golden Coral in Norman to start the planning of the 2013 State Convention of Joyce Gibson. Cathy Holsted, Convention chairman, conducted the meeting. After the meeting, Cathy and Doc had to attend their grandson's game at Bridge Creek.

**November 1<sup>st</sup>** – Worked the OU Basketball game scanning tickets. This is a huge fundraiser for Delta Kappa. We work all men's and women's basketball games from November through February.

**November 2<sup>nd</sup>** – Time to cook at the church again.

**November 3<sup>rd</sup> – 7<sup>th</sup>** – Attended the UDC Convention in Fort Worth, TX. UDC is the Daughters of the Confederacy. What a great experience! The President General from South Carolina presided over the meetings. I got to wear my Civil War dress & hat on Friday night and dressed up in Denim

and diamonds on Sunday evening. Returned home just in time to prepare for the State Council meeting that coming week-end.

**November 11<sup>th</sup>** – Had the 2012 State Convention meeting prior to the State Council Christmas party. I made homemade stew and white chili to warm everyone up. We learned Christmas carols and played the “left-right” game for the gifts. It was really fun!

**November 12<sup>th</sup>** – Saturday morning got up to attend the November State Council Meeting. It was a really good meeting with several guests. Two of our guests were Veterans, Cogi Beattie and Betty Worley. The next guest was Dr. Heather Bentley, doctor of veterinarian. She spoke on the care of our pets during the winter. There was good food and a great group of ladies.

**November 13<sup>th</sup>** – Got up Sunday morning to go to Sunday school and church but the calves we are weaning got out of the pen. So Dan in his pickup and me on my 4-wheeler herded them back to the pen. Needless to say, we missed Sunday school and church!!! So I got ready to travel to Vinita for Alpha Sigma’s 50<sup>th</sup> Anniversary. Dan decided not to ride with me so I called my Corresponding Secretary, Sue Knight, and she went with me. It was such a joy to meet all of these ladies. Sandy Saunder’s mother is a charter member and she is one of the oldest members in Oklahoma ESA. They had several past chapter scrapbooks, yearbooks, and lots of memorabilia exhibited.

**November 16<sup>th</sup>** – Time to cook again at the church with a different crew!

**November 19<sup>th</sup>** - I worked the “Give Thanks Walk” at the Penn Square Mall in Oklahoma City. Great event for St. Jude’s.

**November 21<sup>st</sup>** – We had Delta Kappa’s Thanksgiving Dinner and the DIANA presentation.

The Holiday season will be upon us soon. I wish all of my ESA sisters a very Merry Christmas and a Happy New Year!!

Don’t forget to pay your chapter dues before January 1<sup>st</sup>. Deadlines for contest and entries will be upon us before you know it. Watch closely to these deadline dates. If you don’t know what they are, go to our web site ([oklaesa.org](http://oklaesa.org)) and print the dates out or put them on your calendar. Enjoy your family this holiday season and share lots of memories and God’s love with everyone.

**Merry Christmas and Happy New Year!**



*Gwynn Nell Swanson*  
2011-2012 Oklahoma State President  
2406 County Rd 1280  
Blanchard, OK 73010  
H) 405-485-2921  
C) 405-317-7342  
[gnswanon@pldi.net](mailto:gnswanon@pldi.net)  
"Come Dance With Me in ESA"



**1st Vice President/Educational Chairman  
Joyce Gibson**

Happy Holidays & Happy New Year everyone!

First, I would like to thank all of you that took the opportunity to be enlightened by our wonderful District Coordinators. Their Leaderships were a combination of fun and information. District Coordinators, you did a great job!! Try not to miss the upcoming District Meetings and Installations.

Next on the list for a continuation of the fun is the Nominating Committee!!!! Nellrita Barrick, Lola Jaegers, Peggy Pate, Peggy Sprinkle, Jacque Edwards and I are all waiting to hear from you!! Any chapter can nominate anyone for the office of 2nd Vice President, Parliamentarian, Petticoat Journal Editor, Recording Secretary, State Project Director and Treasurer. The Nomination form is available on line at [www.oklaesa.org](http://www.oklaesa.org) under Forms/Reports or we would be more than happy to mail you a copy. This form, acceptance letter and qualifications must be turned in by March 1, 2012

There are plenty of appointed positions available also, for your entertainment. Just let me know what you enjoy and we will help you chose a position to fit that activity!! This is the gift that keeps on giving!!

*Joyce Gibson  
ESA Oklahoma State 1st Vice President  
P.O. Box 179, Norman, OK 73070  
Phone 405-364-0484  
Email: [firstvp@oklaesa.org](mailto:firstvp@oklaesa.org) or [joies02@aol.com](mailto:joies02@aol.com)*



**Treasurer's Report  
Linda Southerland**

Happy Holidays

I once heard: "If you don't like the weather in Oklahoma, just wait a while and it will change," well the weather has certainly been changing here in Oklahoma. Not just day to day, sometimes hour to hour.

I have sent out notices to those chapters who have not submitted **STATE** dues as of November 1, 2011. If your chapter was one of those who received a notice, remember, the State dues were increased in June. Changes in dues are as follows: The **state dues** shall be thirty dollars (\$30.00) per chapter plus **five dollars (\$5.00) per member**. Please adjust your dues to reflect this increase. **District dues** will remain at \$10.00 per chapter plus any adjustments or assessments voted on by your district.

**International Council ( ESA Membership Headquarters)** dues are now **\$40.00 per chapter**.

Please remember to pay **all** chapter dues.

**State Dues should be remitted to Linda Southerland, 708 S. 8<sup>th</sup>, Clinton OK 73601.  
District Dues should be remitted to your District Treasurer AND  
IC Dues should be sent to ESA Headquarters, 363 W. Drake, Fort Collins CO 80526**

**I wish everyone a Hearty Thanksgiving, a Merry Christmas and a Happy and prosperous  
New Year.**

*Linda Southerland,  
Treasurer 708 S. 8<sup>th</sup>  
Clinton, OK 73601  
(H) 580-323-5449  
(C) 580-445-7608  
lsoutherland43@gmail.com  
treasurer@oklaesa.org*



**Parliamentarian  
Connie Johnson**

Hello to my ESA Sisters!

Please submit any proposed changes to the Oklahoma State Bylaws and standing rules to me by March 1, 2012 so that I can present them at the March 17, 2012 Oklahoma State Council Meeting. Please email suggested changes to me at [oknikkij@yahoo.com](mailto:oknikkij@yahoo.com) or [parliamentarian@oklaesa.org](mailto:parliamentarian@oklaesa.org). May each of you have a wonderful and blessed holiday season.

*Connie Johnson  
Parliamentarian  
512 N. Broad  
Guthrie, OK 73044  
(C) 405-208-9403  
(W) 405-282-3511  
[oknikkij@yahoo.org](mailto:oknikkij@yahoo.org)  
[parliamentarian@oklaesa.org](mailto:parliamentarian@oklaesa.org)*



**Project Director  
Margaret Kramer**



*Greeting from the State Project Director*

How did all you ladies and gentlemen enjoy the rumbles from the Earth?

ESA members enjoyed a special day at the OK School for the Deaf in Sulpur, October 8<sup>th</sup>. We were greeted by the school Social Worker, Sue Cole and a delicious breakfast. Thirty plus members attended. After the conclusion of the District IV meeting we had the pleasure of dining with the students. While enjoying a Mexican meal we had the opportunity to meet many of our sponsored children. It was difficult to determine if they were more excited to see their ESA friends or if it was the anticipation of their upcoming football game and homecoming events later that day. Goody bags were left for all the students. OK School for the Blind students were also supplied with Halloween treats.

I am extremely excited to report that a majority of the students at both schools have been sponsored; thank you sisters for your generosity and support of the State Project. There are still students that are available to sponsor for Christmas remembrances. Just a thought for those of us who have chosen to support the schools rather than the secret sister exchange that instead of donating supplies in December that we might consider getting a gift for one of the children that does not have a sponsor. Please consider the State Project Fund when your chapter is making philanthropic donations.

I trust that my ESA sisters had unique projects to support Hope for Hero's, St. Jude's Give Thanks Walk and other chapter projects. I hope the New Year brings us oodles of energy, good health and countless opportunity to attain our ESA goals.

**REMINDER - OK SCHOOL FOR BLIND TOUR SATURDAY FEBRUARY 25, 2012**

*Margaret Kramer  
Project Director  
Rt. 6, Box 6131  
Eufaula, OK 74432  
(H) 918-689-4925  
(C) 918-61-3130  
mghnurseok@oal.com  
projectdirector@oklaesa.org*



**Junior Past President – Disaster Fund  
Jacque Edwards**

The holidays are upon us once again and you know what that means: baking pies, cooking a turkey and stuffing ourselves for Thanksgiving. Then we get to do it all again in less than 30 days for Christmas. Before you know it, a new year will be here.

I know we all enjoy shopping for Christmas gifts, so while you are shopping would you consider saving some funds to send my way to the STATE DISASTER FUND. With all the claims that were paid last year, it takes a lot to replenish the depleted monies.

**MAKE PAYABLE TO: ESA DISASTER FUND** and send to me:

Jacque Edwards  
Jr. Past President/Disaster Fund Chair  
2101 E. Cooksey Rd  
Guthrie, Ok 73044

Funds received as of today:

JoAnn Rott	Gamma Zeta	#3464	Edmond	100.00
	Zeta Gamma	#4253	Shawnee	50.00
	Alpha Sigma	#3085	Vinita	25.00
	Gamma Pi	#5091	Inola	100.00
	Eta Epsilon	#2840	Skiatook	100.00
	Zeta Epsilon	#4614	Seminole	15.00
	Epsilon Kappa	#3083	Hominy	14.00
	Kappa Theta	#5414	Guthrie	100.00
Jacque Edwards	“ “	#5414	Guthrie	500.00

**TOTAL TO DATE: \$1,004.00**

PLEASE SEND IN YOUR CONTRIBUTIONS.....

A Very Merry Christmas and Happy New Year.

*Jacque Edwards  
Junior Past President – Disaster Fund  
2101 E. Cooksey Rd  
Guthrie, Ok 73044  
(C) 405-623-5884  
(W) 405-282-5100  
jerae09@hotmail.com  
jrpastpresident@oklaesa.org*





**District III  
Peggy Hughes**



**What a Wonderful World**

Thanks to all of you who attended our Leadership Seminar last September. I'm looking forward to our next meeting at Muskogee in February. Meanwhile, our treasurer, Sandy Saunders, would like for me to remind you that your chapter dues (\$20) should be sent to her. Her address is 7905 N 144 E Ave, Owasso, OK 74055.

*Peggy Hughes  
District III Coordinator  
1759 E. 59<sup>th</sup> Place  
Tulsa, OK 74105  
(H) 918-742-5591  
(C) 918-398-1113  
hughestulsa@aol.com  
district3coord@oklaesa.org*



**Chaplain  
Linda Leveridge**

As we welcome this wonderful time of the year, may your hearts celebrate the true reason for the season and may your homes be warmed by His joy, peace, and love. Keep each and every one of your sisters in your thoughts and prayers we well.

Merry Christmas!

*Linda Leveridge  
Chaplain  
228 Atterberry  
Norman, OK 73071  
(H) 405-364-0721  
(C) 405-802-6521  
lleveridge@att.net*



---

## **Convention Janice Shockley**

Convention 2012

**2012 Convention registration - - - - - \$85.00**

**2012 Convention hotel reservations - - - - - \$79.00**

**2012 Convention memories of “ESA In The Country” - - - PRICELESS**

Your hosting chapters, Sigma Chi, Beta Mu, Zeta Gamma, and Delta Kappa would like to extend a special invitation to each and everyone of you to attend the 2012 Convention being held at the Holiday Inn in Norman on April 27, 28 and 29, 2012. Here are a few words to describe “ESA In The Country” ---- fun events, fantastic fellowship, informative workshops, delicious food, special memories, comfortable and relaxing sleeping rooms (although there may not be much sleeping going on), lots of desirable shopping close to the hotel, beautiful ladies in evening attire (handsome men too), late night celebrating in the hospitality room, great entertainment, awards presentations, a few surprises, lots of laughter and talking, and probably a few bloopers along the way. You wouldn't want to miss any of this. Plus, you will have a chance to meet all of the “Country Characters” that will be making this convention a memorable event. They are Gwen the Goose, Lola the Lamb, Robbin the Robin, Sue the Siamese Cat, Wanda the Whippoorwill, Doris the Dog, Joyce the Jersey Cow, Helen the Horse, Betty the Bluebird and of course, Linda the barn builder. Don't forget the deadline for your registration and your room reservation is Friday, April 13, 2012. The ad deadline for the convention program is April 1, 2012. The forms for each of these and information about the hotel is also published in this issue of the PJ.

**Please join us for a great convention and a fun weekend in the country – that's “ESA In The Country”.**

The holiday season is upon us which means lots of yummy food for us to enjoy. I hope your holiday season will be filled with an abundance of peace, joy and love and special and memorable times spent with your family and friends.

*Janice Shockley  
2012 Convention Chair  
2405 Weatherford  
Norman, OK 73071  
(H) 405-321-5907  
convention@oklaesa.org  
gandjshock@sbcglobal.net*



2012 Oklahoma State Convention - "ESA IN THE COUNTRY"

April 27, 28, & 29, 2012



Room rate of \$79 plus tax per night – Reservations due by Friday, April 13

Free Parking - Free hot buffet breakfast  
2012 Oklahoma State Convention - "ESA IN THE COUNTRY"



## Contests Sue Patterson

### Summary of Contests, Chairmen, Guidelines and Deadlines

<p><b>ASSOCIATION OF THE ARTS</b> Nancy Baucom <a href="mailto:assocofthearts@oklaesa.org">assocofthearts@oklaesa.org</a> April 1</p>	<p>Entry forms for Divisions I through IX - Poetry/Literature &amp; Music Entries submitted to chairman by April 1. Other items brought to convention.</p>
<p><b>AWARDS</b> Judy Cravens <a href="mailto:awards@oklaesa.org">awards@oklaesa.org</a> April 1</p>	<p>"What ESA Means to Me" essay. Two categories (members of less than one year and members of more than one year) submitted to chairman by April 1. Service Awards, Pallas Athene and First Pearl submitted to chairman by April 1.</p>
<p><b>CIRCLE OF LIFE</b> Judi York <a href="mailto:circleoflife@oklaesa.org">circleoflife@oklaesa.org</a> April 1</p>	<p>Total money donated, ALSAC Events, Radiothons, and Total money donated for Special Events. Information from Service Report and ESA Headquarters.</p>
<p><b>DIANA</b> Libby Zaage <a href="mailto:diana@oklaesa.org">diana@oklaesa.org</a> March 1</p>	<p>Compiled entry. Guidelines and packet kit available at <a href="http://www.oklaesa.org/contests.htm">www.oklaesa.org/contests.htm</a></p>
<p><b>DISASTER FUND</b> Jacque Edwards <a href="mailto:jrpastpresident@oklaesa.org">jrpastpresident@oklaesa.org</a> April 1</p>	<p>Total money donated; 15 or less/16 or more members; Information from Service Report and ESA Headquarters report.</p>
<p><b>DISTINGUISHED ATHENIAN</b> Tina Davenport-McKamie <a href="mailto:secondvp@oklaesa.org">secondvp@oklaesa.org</a> April 1</p>	<p>Educational Director nomination, submitted by chapter. To be eligible for this award the Educational Director must have rendered some important educational service to her chapter, her community or to her state ESA Council; contributing notable value to her state's educational expansion.</p>
<p><b>EASTER SEALS</b> Jo Ann Rott <a href="mailto:easterseals@oklaesa.org">easterseals@oklaesa.org</a></p>	<p>Total money donated; From Service Report or Chairman's records.</p>

April 1	
<b>ESA FOUNDATION</b> Ramona Paine-Means <a href="mailto:esafcounselor@oklaesa.org">esafcounselor@oklaesa.org</a> April 1	Total money donated excluding Turn-Around Fund; total money through Turn-Around Fund only. Information from ESA Foundation monthly report.
<b>GOLD LINK</b> Tina Davenport-McKamie <a href="mailto:secondvp@oklaesa.org">secondvp@oklaesa.org</a> April 1	Six timely Educational reports.
<b>GOLD SEAL (Education Book)</b> Tina Davenport-McKamie <a href="mailto:secondvp@oklaesa.org">secondvp@oklaesa.org</a> April 1	Compiled entry.
<b>MEMBERSHIP</b> Mary Johnson <a href="mailto:membership@oklaesa.org">membership@oklaesa.org</a> February 28	Most New Members and Membership Growth awards. Taken from ESA Headquarters reports.
<b>OUTSTANDING CHAPTER</b> Joy Agan <a href="mailto:outstandingchapter@oklaesa.org">outstandingchapter@oklaesa.org</a> April 1	Accumulated points reported from contest chairmen and State/District secretaries; IC/State Treasurers; State President/1 <sup>st</sup> VP/2 <sup>nd</sup> VP
<b>OUTSTANDING YOUTH</b> Nellrita Barrick <a href="mailto:outstandingyouth@oklaesa.org">outstandingyouth@oklaesa.org</a> March 1	Compiled entry due March 1. Guidelines and packet kit available from ESA HQ and at <a href="http://www.oklaesa.org/contests.htm">www.oklaesa.org/contests.htm</a> . State recognition of chapters that participated in their community due March 1.
<b>PHILANTHROPIC</b> Darla Barton <a href="mailto:philanthropic@oklaesa.org">philanthropic@oklaesa.org</a> April 1	Total donated monies, goods, miles and hours. 15 or less/16 or more members; From Service Reports.
<b>PUBLICITY</b> Leslie Farabee <a href="mailto:publicity@oklaesa.org">publicity@oklaesa.org</a> April 1	Compiled entry.
<b>STATE PROJECT</b> Margaret Kramer <a href="mailto:projectdirector@oklaesa.org">projectdirector@oklaesa.org</a> April 1	Total donated monies, goods, miles and hours. 15 or less/16 or more members; From Service Reports.
<b>SCRAPBOOK</b> NO CHAIRMAN for 2011-2012 <a href="mailto:scrapbook@oklaesa.org">scrapbook@oklaesa.org</a> March 1	Scrapbook materials for one page in State Scrapbook.

## GENERAL CONTEST

### INFORMATION AND GUIDELINES

**All entries are sent to the chairman of each respective contest.**

- State dues must be paid on or before January 1 to be eligible for state contests and voting privileges.
- New chapters are not required to pay state dues until the May 1 following the first anniversary of their charter date.

- Contest entries and materials must be postmarked on or before **March 1** to be eligible for DIANA, and Outstanding Youth.
- All other contest entries and materials must be postmarked on or before **April 1**.
- Scrapbook will be for display only at convention.
- First, Second, and Third Place Certificates will be awarded. The decision of the judges will be final.
- All contests with IC guidelines will follow those guidelines.

*Sue Patterson  
Contest Chairman  
24103 S. Hwy 66, #24  
Claremore, OK 74019  
© 918-697-1666  
susanidap@yahoo.com  
contest@oklaesa.org*



**St. Jude Coordinator  
Judi York**

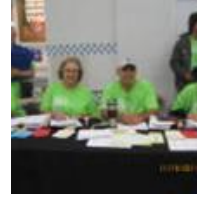
St. Jude's Give Thanks Walk – November 19, 2011



Hard Working Group!

Top Row: Joe Bussey, Aletha Bolt, Robbin Brown, Vivian Gibson, Cathy Holsted

Bottom Row: Marcie Ellington, Doc Holsted, Billie Fritch



## **ESA Foundation Counselor Ramona Paine**

Fall is here, school has started and 532 postcards were sent to the Scholarship Counselors of public, private, charter, junior colleges, universities and tech schools about the Foundation scholarships available. If you know of someone who would like to apply please have them contact me at (580) 242-0741 or refer them to the website: [www.epsilonsigmaalpha.org](http://www.epsilonsigmaalpha.org).

The ESA Foundation is your Foundation whether you have chosen to be a member or not. The mission of the Foundation is to develop philanthropic activities of volunteers, provide assistance to establish programs to improve the quality of life. All contributions are tax deductible. Educational programs to provide individual and/or community awareness are available for a small fee through the Women Helping Women program. Turn around funds are internally funded grants to provide a wide variety of needs.

It costs only \$25 to become a member and only \$15 annually to keep your membership current so that we are able to continue to provide the programs as stated in the Mission Statement. A life active membership is also an option for a one-time fee of \$500 or two annual payments of \$250. Right now the Foundation is holding a special incentive program. Sign up a new member and be registered in a drawing for a lifetime membership if you are the lucky winner. Check out the Foundation website for additional information!

Please remit your individual/chapter dues before the deadline as this saves the Foundation money by not having to mail a dues reminder. Remember postage will increase in January.

*Ramona Paine  
ESAF Counselor  
604 W. Wheat Capital Road  
Enid, OK 73701  
580-242-0741  
Ramona.paine@gmail.com*



---

## **Outstanding Youth Nellrita Barrick**

As you read this, the second semester of school has begun. It is not too early for you chapters to start your plan of action and steps to take for the coveted outstanding Junior High School Award and the Outstanding Senior High Youth Award.

The application forms are on the IC and ESA Oklahoma web sites. If you need additional information, please contact me.

*Nellrita Barrick  
Outstanding Youth  
119 The Hills  
Clinton, OK 73601  
(H) 580-323-2728  
(C) 580-331-8803  
snbarrick@att.net  
outstandingyouth@oklaesa.org*



---

## **Philanthropic Darla Barton**

Hello Sisters!!!!

Hope this finds everyone well and healthy. This is my absolute favorite time of year. The wonderful aromas of Thanksgiving are past and the Christmas season is upon us.

This is also the perfect time of year to do extra “good deeds” for Philanthropic points. So work, work, and work. But remember to always enjoy family and the many blessings around us.

Have a very Merry Christmas and the best New Year ever!

Blessings to all,

*Darla Barton  
135 Rawslings  
Clinton, OK 73601  
(H) 580-323-3493  
Darla\_barton@sbcglobal.net  
philanthropic@oklaesa.org*

# Chapter Chatter



## **Alpha Theta #1038 Muskogee**

Oklahoma School for the Blind students were recently treated to a pizza party hosted by our chapter. We are always so impressed by the students' politeness and appreciation. Kara West, educational director, has been doing an excellent job of trying to get our membership to "Stay Fit and Healthy," as per our state theme. We are looking forward to participating in the upcoming Give Thanks Walk at Woodland Hills. Our members have made donations of non perishable food to a local food bank and have brought items to be sent to troops serving in Afganistan for "Hope for Heroes." Billye Lackey was recognized in a recent meeting for 40 years of service in ESA. She has been very active on the local, state, and international levels and is still going strong. Congratulations, Billye, for a job well done!

*Peggy Pate  
Publicity Chair*



## **Beta Iota #4283 McAlester**

Here we are at the Holidays again! I know you all are going to have a terrific Thanksgiving and Christmas. Beta Iota gals are busy "Taking Care of Business" BUT WE HAVE ALSO BEEN TAKING CARE OF THE FUN SIDE OF ESA. In October we had TWO birthday socials....one at the new Cherry Berrys where we had a wonderful time indulging in delicious frozen yogurt with all the toppings you can imagine. Then about three weeks later we went to the LEOPARD CUPCAKE and.....yes we did,....we ate their delicious and beautifully decorated CUPCAKES! WE went right after work.....as our Lori Few says, "Eat dessert first!" It is an adorable shop which has much more than cupcakes....jewelry, bags, baby things, and more. We also recognized about 20 of our veterans in October by sending them one of the Appreciation for Service cards from The Hugs Project that Billye Peterson has. We are planning to further Thank the Veterans at the Veteran's Center near us by designating them as our Thanksgiving and Christmas recipients and will be giving them personal items which they are in need of. At the October meeting our guest speaker talked about the Oklahoma Mission of Mercy and invited our group to volunteer at this project. Then at our business meeting in November, Tawanna, educational director, introduced our own



Betty Balkman as the speaker. Betty presented an educational on "Financial Fitness for Women". We also made plans for the Christmas Tour of Homes. AND Lori brought a friend to the meeting to check us out....We think she is going to be our newest member! Then Amber, Tina M, Margaret, Jennifer, and June headed up to Tulsa and worked on the St. Jude Give thanks.Walk. Tina and Jennifer brought their moms with them and they were there cheering us on as we worked.

*June Miller*



**Beta Psi #0498  
Clinton**

"Just Crusin' in ESA" is president Doris Cook's theme as we focus on Travel in on educational programs. Along on the journey this fall has been several guests (rushees) as we introduced them to ESA through discussions on our philanthropic projects, opportunities for educational growth, community service and fun socials. We will report our new recruited members to you in the next Petticoat Journal.

One of our "Hope for Heroes" projects involves a cash donation for a wife of a wounded soldier, a patient, in the Bethesda Hospital that's from Clinton. It will help cover her living expenses in the small apartment she has rented. Also, we are making donations of personal items for the residents at the Clinton Veterans' Center. In addition, we are sending boxes to two of our members' sons in Afghanistan.

We have gained volunteers for the Give thanks. Walk held at the Penn Square Shopping Mall in OKC. The stories of who and why they are walking are so heart warming.

For the past few years, Beta Psi has decorated a Christmas tree for our local Route 66 Museum. This year our decorations carry out the theme of St. Jude Children's Research Hospital.

We are proud to have nominated Linda Southerland for the office of 2nd vice president of the 2012-2013 Oklahoma State Council Executive Board. There's not much that gal can't do!

We will all be ready for the holiday breaks following our annual fundraiser, the Cajun Bean Dinner, on December 9th. We serve noon and evening meals with the carry-out numbers almost the same as the eat-ins.

Merry Christmas and Happy New Year, sisters of ESA.

*Nellrita Barrick*



**Delta Kappa #3538  
Norman**

We have wrapped another thrilling year at DK Headquarters and ready to begin a bright New Year. We finished up wrapping Christmas packages for the McGuire store in Noble, one of our local philanthropic events. Enjoyed our Christmas party and our Toys for Tots campaign was a big hit. The toys will be distributed at the annual Christmas Dinner at Norman High on Christmas Day. We wish each and every one of you Happy and Safe Holiday Season.

*Linda Leveridge*



**Epsilon Kappa #1945  
Hominy**

Epsilon Kappa has been extremely busy with a variety of projects, but the most important is our Hope for Heroes. We've mailed over twenty boxes in the last few weeks to our service men and women, given money to our Christ's Cupboard for Christmas baskets in Hominy for the needy and have sent Christmas to our adopted children and foster kids in Osage County.

We had a great Thanksgiving Dinner with our husbands and enjoyed our Christmas social at Mary Johnson's. We ate and laughed and laughed and ate! What a great night we had. Mary had Santa Clauses all over her home (she has a collection), and everything was beautiful.

We hope that everyone has enjoyed ESA as much as we have!

Merry Christmas!

*Joyce Whitewing*



**Gamma Pi #5091  
Inola**

The Holiday season is upon us already. Where has this year gone? I'm sure I am not alone with this observation.

September found us sorting clothes and many other items preparing for our annual fall patio sale. Believe it or not we managed to get ready and have the sale September 16<sup>th</sup> and 17<sup>th</sup> with no rain. It was a success and worth all the effort.

October 29<sup>th</sup> found us at the Inola Elementary School hosting the annual school carnival. Our members had the concession, cake walk and many game booths. We also had a costume contest for the different age groups and some of the students sold tickets for a Wal-Mart gift certificate in a contest to determine the King and Queen of the carnival. Proceeds of the ticket sales and teachers booths go to the teachers for classroom supplies. Proceeds from the other activities are for community needs.

Members are making goodies and craft items for our booth at the annual Craft Fair the Saturday after Thanksgiving and planning a Christmas Home Tour December 3<sup>rd</sup>. We will also be shopping for the students we sponsor at the Oklahoma School for the Blind and making a trip there.

Wishing everyone a joyous Holiday Season.

*Mary Adams*



**Kappa Theta #5414  
Guthrie**

Hello to all of our ESA sisters!

Kappa Theta held our October business meeting at The Stables Cafe. Our educational was on "Health and Vitamins" and we were lucky to have Amy Carothers of Daniel's Drug as our guest speaker. Amy gave a very informative talk and we kept her busy with questions. She spoke about different vitamins and what they do for us.

Our October social was a trip to North Pole City. Members attending said they enjoyed looking at all the beautiful Christmas ornaments. It even gave our President Libby many ideas for ornaments that she can make. We're proud of her craftiness.

The Guthrie Trolley Service was helping participate in the "Stuff the Bus" Campaign with the Oklahoma City Transit service for military families and several of our members donated supplies

for our Military members. We are so thankful to our Military for their acts of bravery and the sacrifices they make on our behalf.

We are now gearing up for the Holiday Season. May each of you have a wonderful Christmas and a Happy New Year and may God bless you and your loved ones

*Connie Johnson*



**Nu Delta #  
Muskogee**



**Wishing everyone a Merry Christmas and a Happy New Year!**

*Nu Delta Members*



**Omega Pi #3832  
Tulsa**

Omega Pi has been pretty busy since summer. We met for a wonderful social on September 24<sup>th</sup> in Grove at Donna Gibbs Crawford's home. Ann Jones drove us in her motor home and Marge Goodno supplied breakfast. We got to Donna's and went to the Pelican Craft Show in Grove. Then we had lunch at the Lucky Parrot and from there to try our luck at the casino. No one hit the jackpot, so decided to do some more antiquing and head home after Donna treated us at Braums.

On October 27<sup>th</sup> a few of us met and stuffed Halloween bags full of treats so our nursing home residents would have a great Halloween.

At TAC meeting on November 2<sup>nd</sup> we all brought things to put in boxes for our Hope for Heroes project. They will be sent to armed force members whose names were given to us. We had everything from food, hygiene products, books and games. We also sent cards to put in the boxes saying "thank you for all you do for us". We will participate in the Veterans Day parade with some walking or riding in a wagon that says "ESA Supports Our Troops. For our military families here our chapter will fill a Thanksgiving basket full of all kinds of goodies and TAC will donate a \$25.00 gift certificate for a turkey.

On the 4<sup>th</sup> of November 5 members and one guest joined Tulsa Historical Society member Jerry Conrad for a tour of Tulsa's underground tunnels connecting buildings along Boston Street. They toured the Philcade, Philtower and Atlast buildings among others. They saw Art Deco influences and a huge vault in the Philtower with 30" steel doors. It was spectacular and then we had lunch in the Adams Hotel restaurant. What an experience this was – didn't realize such beauty existed in those buildings.

Have a Happy Thanksgiving and Merry Christmas.

*Joan Nightingale  
Publicity Chairman*

---

---

**Oklahoma State Council of ESA  
Executive/General Board Meeting Minutes  
November 12, 2011  
Minutes**

The Executive and General meeting of the Board of Oklahoma State Council of ESA was called to order by the president, Gwynn Nell Swanson, at 9:35 a.m. on Saturday, November 12, 2011, at the Goodrich Methodist Church, Norman, Oklahoma. Dr. Billye Peterson, recording secretary, was not present. Minutes were taken by Linda Southerland, treasurer

Joyce Whitewing-Slate, Chair to read the minutes of the August Leadership, was not present. Neither of the other committee members (Linda Voss, Jacque Edwards) was present, so no report was given. Minutes will be placed on file as printed.

Gwynn Nell announced the following appointments: Committee to approve minutes of this meeting: Nancy Buck, Chair; Gwen Beasley and Mary Adams.

Linda Southerland gave the treasurer's report. There are 18 chapters who have not paid their dues yet. Balance forward was \$3,583.62. Income was \$4,039.55; expenses \$1,640.43, leaving a balance as of November 12, 2011, of \$5,982.74. Also in the Speaker's Fund is \$1,207.33; the IC Campaign Fund has \$219.36; and the Doer's Fund has \$172.25. The CD as of 11-1-11 is \$4,030.09. The treasurer's report was placed on file.

Project Director, Margaret Kramer, reported that the OSD Tour had 34 attend. She reported that ESA currently sponsors 80 children at OSD and 73 at OSB with 21 OSD students still in need of sponsors and 15 at OSB needing sponsors. Project fund balance as of November 10, 2011 is \$825. She then announced that the OSB tour date will be 2-25-12.

Judi York announced that she, Deb Hughes, and Rosalie Griffith would be attending the St. Jude Marathon in Memphis on December 3, 2011, and they are looking for sponsors.

Gwynn Nell made the following announcements: Mary Adams had the Directories for sale for \$8; Bake sale items in back; 2012 Convention charms for sale; check out the Quilt raffle; Jo Ann Rott is selling raffle tickets for Easter Seals; remember the 50/50 jar; 2012 convention registration--see Robbin Brown; 2012 convention ad – see Sue Knight and Mary Adams.

Gwynn Nell announced the Oklahoma State Council meeting would begin soon, and declared the meeting adjourned at 9:47 a.m.

*Linda Southerland, Acting Secretary  
for  
Dr. Billye Peterson  
Recording Secretary*

---

---

**Oklahoma State Council of ESA  
State Council Meeting Minutes  
November 12, 2011  
Minutes**

The State Council meeting was called to order by president, Gwynn Nell Swanson, at 10:47 a.m. on Saturday, November 12, 2011, at the Goodrich Methodist Church, Norman, Oklahoma. Dr. Billye Peterson, recording secretary, was not present. Minutes were taken by Linda Southerland, treasurer.

Members stood for the opening ritual led by Janice Shockley. Pledge of Allegiance was lead by Carrie Willingham.

Chaplain Linda Leveridge gave a Thought for the Day, "The Master's Hand". She asked that all our sisters be remembered with prayers and cards.

Gwynn Nell welcomed all members and stated she hoped everyone enjoyed the Christmas party Friday evening. She recognized Delta Kappa members for being hostesses for today's meeting and for the great lunch they have prepared.

Gwynn Nell recognized the Sooner Senioettes. There were no first-time Council meeting attendees. There were 4 guests, 0 New Pledges, 0 DESA's, 0 Elan's, and 0 MESA's.

Joyce Whitewing-Slate, Chair, Linda Voss and Jacque Edwards were the committee to read the minutes of the August Leadership. None of the committee was present so Gwynn Nell reported that the minutes were correct as printed and will be placed on file.

Gwynn Nell announced the following appointments: Committee to approve minutes of this meeting: Nancy Buck, Chair; Gwen Beasley and Mary Adams.

Linda Southerland gave the treasurer's report. There are 18 chapters who have not paid their dues yet. Balance forward was \$3,583.62. Income was \$4,039.55; expenses \$1,640.43, leaving a balance as of November 12, 2011, of \$5,982.74. Also in the Speaker's Fund is \$1,207.33; the IC Campaign Fund has \$219.36; and the Doer's Fund has \$172.25. The CD as of 11-1-11 is \$4,030.09. The treasurer's report was placed on file. She announced that 17 chapters have not paid their dues.

Project Director, Margaret Kramer, reported that the OSD Tour had 34 attend. She reported that ESA currently sponsors 80 children at OSD and 73 at OSB with 21 OSD students still in need of sponsors and 15 at OSB needing sponsors. Project fund balancer as of November 10, 2011 is \$825. She then announced that the OSB tour date will be 2-25-12.

Gwynn Nell read a letter from IC reporting that member dues would be raised effective January 1, 2012. New member dues will be: Regular member- \$49; Senior member -\$45.

Sue Knight, corresponding secretary read regrets and correspondence. Gwynn Nell read a Thank You card from Sue Knight.

First Vice President/Nominating Chair, Joyce Gibson reminded everyone of the nominating committee and that she would love to have nominations sent in.

Second Vice President/Educational Director Tina Davenport-McKamie gave a mini-educational on Walking. She stressed the importance of using the right shoes and socks and that you need to warm up and cool down before and after exercising. She gave examples of some easy stretching exercises and had those present do the exercises with her.

Connie Johnson, Parliamentarian, reminded everyone to submit changes in bylaws and standing rules to her by March 1, 2012.

Reports from District Coordinator: District II Coordinator, Sylvia Ochs, reported on District II Leadership and announced the installation of officers will be Saturday March 24, 2011 in Kingfisher.

Deb Hughes, Senior past president thanked those who gave donations for the St. Jude Marathon to be run on December 3, 2011 in Memphis.

Awards Chair, Judy Cravens gave a report on Awards and encouraged everyone to enter the "What ESA Means to Me" essay contest.

2012 Convention hostesses performed a skit to invite everyone to the 2012 Oklahoma State Convention ESA in the Country at the famous Holiday Inn, Norman, on April 27-29, 2012.

Linda Leveridge gave a devotional and we recessed for lunch at 12:07 pm. (During lunch, members helped Peggie Sprinkle fill "Boxes for Heroes".)

Joyce Lacey-Kenney, Credentials Chair, gave a report about having dues paid to be eligible for contests at State Convention.

Directory Chair, Mary Adams reported that 99 directories have been sold and she has six left to sell.

Peggie Sprinkle, Care Connection Coordinator gave a report on Care Connection/Hope for Heroes and introduced Cogi Beattie and Betty Worley (2 special guests). Peggie thanked them for serving our Country and for coming today to share their stories.

Gwynn Nell introduced Dr. Heather Bentley, veterinarian, our special speaker for today who told us how to care for our pets and some other tips on first aid, cold weather and traveling with pets.

Nancy Baucom gave a report on the Association of the Arts.

ESA Foundation Counselor, Ramona Paine-Means reminded everyone to pay Foundation dues and gave a report on the new contest the Foundation is sponsoring.

ESA for St. Jude Chair, Judi York reminded everyone of the Give Thanks Walk in Tulsa and about the Tulsa Dream Home. Aletha Bolt reminded everyone of the Give Thanks Walk in OKC. The walks will be held on Saturday, November 19, 2011.



Jo Rott, Easter Seals Chair, gave a report on the visit to Easter Seals in OKC on October 6<sup>th</sup>.

Cathy Holsted, 2012 IC Convention Chair, gave details on the IC Convention and passed around a sheet to sign if you plan to be at the convention so she can have a better handle on what everyone needs to do.

Sue Patterson, Contest chair, gave a report.

Gwynn Nell asked for announcements. Louise Maloy announced that Alpha Nu, Arapaho had pecans and cookbooks for sale. Door prizes were drawn. Robbin Brown announced that the early registration for State Convention drawing was won by Linda Southerland.

Cathy Holsted announced Billie Fritch won the raffle drawing at her 50/50 booth.

Gwynn Nell declared the meeting adjourned at 1:47 p.m. and led everyone in the closing ritual.

*Linda Southerland, Acting Secretary*

*for*

*Dr. Billye Peterson*

*Recording Secretary*

*19513 Fieldshire Dr.*

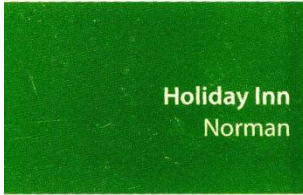
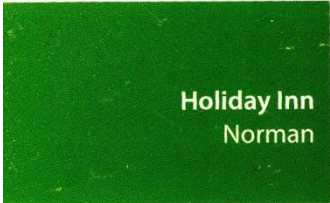
*Edmond, OK 73012-3579*

*(H) 405-330-3082*

*(C) 405-812-0138*

*billyepeterson@gmail.com*

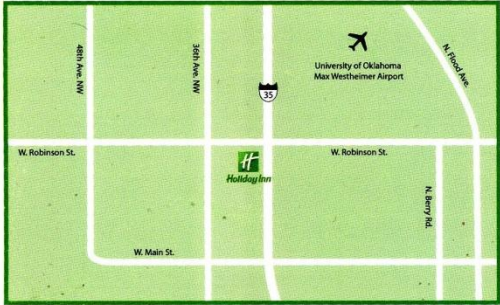
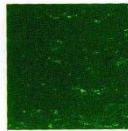
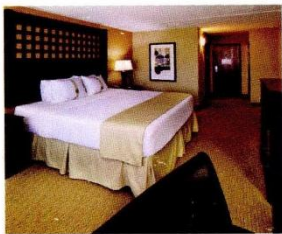
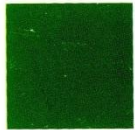
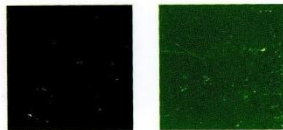
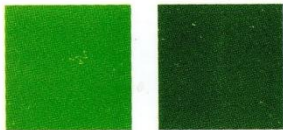
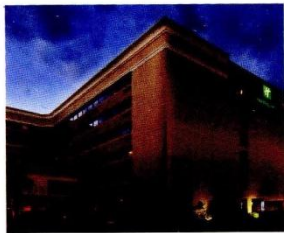
*recsecretary@oklaesa.org*



**Just the Place for You**

The Holiday Inn Norman is located on the west side of the I-35 corridor in what is considered to be the desirable "west side." Within minutes of the hotel, there is everything you could desire.

- 150 Guest Rooms
- Spacious Suites
- Microwaves & Mini \*Refrigerators in all rooms
- Large Indoor Pool & Whirlpool Spa
- Exercise & Fitness Center
- Business Center
- West Side Bar & Grill! Featuring American Cuisine including Steaks, Seafood & Fine Wine



**How to Find Us**

From North: Go south on I-35, exit 110A/Robinson Westbound. Continue on Interstate Drive through stop light. Hotel is on your right.

From South: Go north on I-35, exit 109/Main Street Westbound. Merge onto West Main Street. Turn right on North Interstate Drive. Take the 1st right to stay on North Interstate Drive. Hotel is on your left.

**What is Waiting for You**

- The Sooner Mall, Hollywood Theaters, Andy Alligator's Fun Park, Cobblestone Creek Golf Club
- restaurants such as Saltgrass Steakhouse, Cracker Barrel, Yomato's, Red Lobster, and many more
- In addition, we are only 4 miles from the University of Oklahoma.

Holiday Inn Norman  
1000 N. Interstate Drive, Norman, OK 73072  
P: (405) 364-2882 | F: (405) 329-1525

holidayinn.com/normanok ■ 1-800-HOLIDAY (1-800-465-4329)

©2008 InterContinental Hotels Group. All Rights Reserved.  
Independently Owned and Operated by Premier Hospitality Management, Inc.

## Convention Program Ads



**“ESA In The Country”**  
Oklahoma State Convention  
April 27, 28, & 29, 2012



Now is the time to send in your camera-ready copy to appear in the 2012 Oklahoma State Convention Program.

Space is available for your special ad to honor your chapter, secret sister, Board members, and anyone who is near and dear to you.

Business ads will also be a great way for them to have statewide advertising and promote their business.

Pricing will remain the same as in the past and is listed as follows.

Full page	\$100.00
$\frac{3}{4}$ page	75.00
$\frac{1}{2}$ page	50.00
$\frac{1}{4}$ page	25.00
Business card	12.50

**\*\*\*\*Ad Deadline – April 1, 2012\*\*\*\***

Remember---- \$100.00 goes to the member who sells the most ads that totals to the most money

Send your ad to: Sue Knight  
26202 S. 4180 Rd.  
Inola, Ok. 74036

**Advertising Sales Sheet**

*This form must be completed and submitted with the ad copy*

Organization: Oklahoma State Council of ESA

“ESA In The Country” 2012 Convention

Sue Knight, Advertising Chairperson

26202 S. 4180 Road

Inola, OK 74036

Make checks payable to: 2012 State Convention

1/2 Page

Name of person to contact if there are any  
Questions concerning advertising.

Name \_\_\_\_\_

Chapter Name & #: \_\_\_\_\_

Daytime phone \_\_\_\_\_

Email \_\_\_\_\_

Ads for Convention Program

Full Page 8 1/2 x 11	\$100.00
3/4 Page	\$ 75.00
1/2 Page 8 1/2 x 5 1/2	\$ 50.00
1/4 Page 4 1/4 x 4	\$ 25.00
Business Card	\$ 12.50
<b>Deadline – April 1, 2012</b>	

Ads will be placed in the back of the Convention  
Program book and will be printed in the same ink and  
paper color as chosen for the other pages.

Ad pages should be submitted **press ready**.

*However, if you would like for us to compose you ad,*

1/4 PAGE

*we will be most happy to do so.*

Black/white line art prints best; photos and artwork  
with shades or screens are accepted, but do not print  
well.

Business cards convert easily into 1/4 page ads, but  
avoid cards with dark or colored backgrounds and  
colored ink.

Business Card

Oklahoma State Council 69<sup>th</sup> Annual Convention

"ESA in the Country"

April 27, 28 &amp; 29, 2012

Holiday Inn Hotel – 1000 N. Interstate Drive – Norman, OK

Phone: 405.364.2882 – Registration Deadline Friday, April 13, 2012

[www.holiday-inn.com/normanok](http://www.holiday-inn.com/normanok)


MEMBER NAME:		
ADDRESS:		CITY, STATE, ZIP:
PHONE:	FAX:	EMAIL:
CHAPTER NAME:	CHAPTER NUMBER:	CITY:
<b>CHECK ALL THAT APPLY:</b>		
<input type="checkbox"/>	CHAPTER PRESIDENT	<input type="checkbox"/>
<input type="checkbox"/>	EXECUTIVE BOARD MEMBER	<input type="checkbox"/>
<input type="checkbox"/>	CURRENT/PREVIOUS IC OFFICER	<input type="checkbox"/>
<input type="checkbox"/>	1ST TIME CONVENTION GOER	<input type="checkbox"/>
<input type="checkbox"/>	GENERAL BOARD MEMBER	<input type="checkbox"/>
<input type="checkbox"/>	CURRENT/PREVIOUS ESAF BRD	<input type="checkbox"/>
<input type="checkbox"/>	2011/2012 PLEDGE	
<input type="checkbox"/>	SOONER SENIORETTE	
<input type="checkbox"/>	GUEST	
SPECIAL DIET MENU/MEDICAL REASONS ONLY ** CONTACT: ** Janice Shockley- Convention Chair 405) 321-5907, 2405 Weatherford, Norman, OK 73071 ( <a href="mailto:gandishock@sbcglobal.net">gandishock@sbcglobal.net</a> )		
<b>MEN'S REGISTRATION:</b>		
NAME:		HUSBAND/ESCORT OF:
<b>DESA/ELAN REGISTRATION:</b>		
NAME:		ESA MEMBER/CHAPTER:
<b>GUEST REGISTRATION:</b>		
NAME:		GUEST OF:
<b>CHECK ALL THAT APPLY</b>		
<input type="checkbox"/>	MEMBER'S FULL REGISTRATION FEE POSTMARKED BY Friday, APRIL 13, 2012 includes Friday night mixer, general assemblies, workshops, Recognition Luncheon, Banquet & Brunch	\$85.00
<input type="checkbox"/>	GUEST'S REGISTRATION FEE includes Friday night mixer and Banquet	\$40.00
<input type="checkbox"/>	DESA/ELAN REGISTRATION includes Friday night mixer, general assemblies, workshops, Recognition Luncheon, Banquet & Brunch	\$85.00
<input type="checkbox"/>	BANQUET GUEST FEE	\$40.00
<input type="checkbox"/>	LATE FEE	\$25.00
<b>TOTAL AMOUNT ENCLOSED</b>		

**Enclose Check Payable to:**

Mail Registration form and payment to:

**2012 ESA State Convention Fund**

Robbin Brown, Registration Chair

PO Box 946

Choctaw, OK 73020 Phone: 405) 390-2080

[Robbesa4@tds.net](mailto:Robbesa4@tds.net)

**CANCELLATION:** If you find it necessary to cancel this registration, the full amount less a \$15.00 processing fee will be refunded if your written cancellation is postmarked no later than the Friday, April 13, 2012 deadline. Registrations postmarked after Friday, April 13, 2012, will be assigned seating where vacancies exist. We cannot guarantee that late registrants will be seated with their chapters after Friday, April 13, 2012.

## 2011-2012 Calendar of Events

### **2012**

Saturday, February 25	OK School for the Blind Tour District III Meeting & Installation District V Meeting & Installation Muskogee
Saturday, March 10	District IV Meeting & Installation Del City
Saturday, March 17	Executive & General Board Meeting State Council Meeting Norman
Saturday, March 24	District II Meeting & Installation TBA
April 27-29	69th Annual State Convention "ESA in the Country" Holiday Inn Hotel, Norman – 405-364-2882 Norman