



**Oklahoma State Council
Petticoat Journal
2011-2012**



**Gwynn Nell Swanson
President**

**Volume 60 Issue 4
February/March**

Table of Contents

<u>Page</u>	<u>Contents</u>
2	President
4	1 st Vice President/Nominating Committee Chairman
6	2 nd Vice President/Educational Chairman
7	Educational
8	Corresponding Secretary
8	Petticoat Journal Editor
9	Project Director
11	Care Connection
12	Convention Chairman
13	ESA for St. Jude's Chairman
14	ESA Foundation
15	Outstanding Youth Chairman
15	Philanthropic
16	Publicity Chairman
17	IC State President
18	Chapter Chatter
24	2012 Convention Center Hotel
25	2012 Convention Program Ads
27	2012 Convention Registration Form
28	Calendar of Events



Dancing with your Oklahoma State President Gwynn Nell Swanson



Happy New Year everyone! Boy how the time flies. Here it is 2012. Haven't been busy since November but am enjoying the year.

November 21 – Delta Kappa had their annual Thanksgiving Dinner. Let me think! I have done the turkey, dressing and gravy for the past 10+ years now. Everyone else brings their favorite dish and we have a feast. Each year we honor our chapter DIANA and invite her and family to this dinner. What a blessing to meet the DIANA.

November 24 – Thanksgiving dinner was at home. All of my family was here except the ones from Tulsa. Rodney had to work and didn't get to come down. It is such a blessing to have family with you. Each family member told what they are thankful for this year.

November 28 – Attended the Chisholm Trail Unit of Parliamentarians. I have been attending these meeting to learn about Parliamentarians procedures. It has been very interested. Learning a lot!!

December 2 – Worked OU basketball game.

December 3 – Robbin Brown and I drove to Sapulpa to attend the TAC Annual Christmas Dinner at Freddie's. The food is always delicious! Congrats to Connie Bartlett for becoming the new TAC President. The installation was beautiful.

December 5 – Attended Delta Kappa monthly business meeting. December is usually a laid back month for us.

December 14 – Cooked at the church again. This is a great ministry! I enjoy it very much. We did my Chicken and Dumplings. Have you ever made dumplings for 160 people??? I did!!

December 15 – Delta Kappa had their yearly Christmas party at Chili's. We decided not to do gift exchange this year and instead do toys to tots. Everyone that attended brought an unwrapped toy. Food was excellent and the company was even greater!

December 16-17 – Went to Tulsa to pick up the grandkids before 11:30 AM at school. Stayed there over night and came back home Sunday morning just in time to cook turkey, dressing, and gravy for the church holiday dinner.

December 18 – Attended my church holiday dinner. The church was filled to capacity. What a variety of food and desserts!

December 31 – Worked OU basketball game.

HAPPY NEW YEAR, 2012!

January 2 – Attended Delta Kappa monthly business meeting.

January 10 – Met with my Convention Chairman, Janice Shockley, at the hotel. Went over all the details of the convention with the hotel coordinator. Can you believe in 3 months we will be attending our State Convention?? I am so looking forward to it.

January 11, 21, 24 – Will be working the OU basketball games. This is a really good fund raiser for us.

January 13 – Attended the Mock Election at the Grady county election board. I have been the precinct inspector for the county for over 40 years now. What a learning experience.

January 30 – I have been called for Jury Duty!!!! Got to show up at 8:30 AM that day. It's been many years since I have had to do this. But I've got to do my patriotic duty!!

DEADLINES! DEADLINES! DEADLINES!

By the time you read this, the March 1st deadline for DIANA and Outstanding Youth entries is over. I hope you didn't miss it.

April 1st is the deadline for all other contest entries. Awards, Easter Seals, Philanthropic, State Project just to name a few. PLEASE get your entries in on time! Chapters don't forget to enter your chapter educational chairman for the Distinguished Athenian award. She so deserves this recognition. You may find all of this information on the Oklahoma Web site; www.oklaesa.org

February 25 is the Parkview Tour and District III and V Meetings and Installation of new officers. You don't want to miss this.

March 17 is my last State Council meeting. Come and see what is going on in your State. You will meet the new slate of state council officers.

Don't forget the 69th Oklahoma State convention April 27, 28, 29, 2012 at the Holiday Inn in Norman. The registration and room information is available in this issue and website. If it has been a while since you have attended state convention then let's get those chapter members together and bring them to Norman. You will have the opportunity to meet new friends and reunite with old ones. COME ON OUT TO THE COUNTRY!

If you would like me to visit your chapter, please contact me and I would be more than happy to come.

“Keep Dancing”

*Gwynn Nell Swanson
2011-2012 Oklahoma State President
2406 County Rd 1280
Blanchard, OK 73010
H) 405-485-2921
C) 405-317-7342
gnschwanson@pldi.net
"Come Dance With Me in ESA"*



**1st Vice President/Educational Chairman
Joyce Gibson**

Can you believe it is already time to start getting ready for State Convention? Time sure flies when you are having fun!!

The District Coordinators are planning their spring meetings and installations. Their dates are:

Saturday, February 25, District 3 and District 5, OSB tour, Muskogee

Saturday, March 10, District 4, Del City

Saturday, March 24, District 2

We hope you can attend.

The Nominating Committee, Nellrita Barrick, Lola Jaegers, Peggy Pate, Peggie Sprinkle, Jacque Edwards and I, are waiting to hear from you. Deadline for nominations is March 1, 2012. Just do it!

At your chapter meeting please consider nominations for the Executive Board: 2nd Vice President, Recording Secretary, Treasurer, Parliamentarian, Petticoat Journal Editor, and Project Director. The nomination form is included in this PJ issue or you can find it on the state website at, www.oklaesa.org/form-reports.htm.

Qualifications required to run for an elected office are defined in our state bylaws. The bylaws state, "An active chapter may nominate any member for an elected office, except Corresponding Secretary. ...Must be an active member of the chapter in good standing and have been an ESA member for at least two years. A candidate for the elected office of President, First Vice President, Second Vice President, Treasurer and Parliamentarian must have held the office of Chapter or City Area Council President and give ... consent in writing. A candidate for the elected office of Recording Secretary, Project Director and Petticoat Journal Editor must give ... consent in writing. ... Must have attended at least one (1) previous State convention. Consent of the candidate and ... qualifications shall be sent to the Nominating Committee by March 1."

*Joyce Gibson
ESA Oklahoma State 1st Vice President
P.O. Box 179, Norman, OK 73070
Phone 405-364-0484
joies02@aol.com
firstvp@oklaesa.org*



**OKLAHOMA STATE COUNCIL
NOMINATION FORM FOR 2012-2013 OFFICERS**

Please complete the nomination form and submit to the 1st Vice-President before March 1, 2012. All candidates must send their written consent, qualifications and a picture to the 1st Vice-President **BEFORE** March 1, 2012. The candidates for state offices will be presented at the March State Council meeting and their qualifications and picture will be published in the April/May issue of *The Petticoat Journal*.

SECOND VICE PRESIDENT

Name _____ Chapter _____
Town _____ Acceptance Attached _____
Nominee has been notified of nomination _____ Yes _____ No

RECORDING SECRETARY

Name _____ Chapter _____
Town _____ Acceptance Attached _____
Nominee has been notified of nomination _____ Yes _____ No

TREASURER

Name _____ Chapter _____
Town _____ Acceptance Attached _____
Nominee has been notified of nomination _____ Yes _____ No

PARLIAMENTARIAN

Name _____ Chapter _____
Town _____ Acceptance Attached _____
Nominee has been notified of nomination _____ Yes _____ No

PROJECT DIRECTOR

Name _____ Chapter _____
Town _____ Acceptance Attached _____
Nominee has been notified of nomination _____ Yes _____ No

PETTICOAT JOURNAL EDITOR

Name _____ Chapter _____
Town _____ Acceptance Attached _____
Nominee has been notified of nomination _____ Yes _____ No

Nominating Chapter Name & #: _____ **City:** _____
Contact: _____

Mail to: Joyce Gibson
P.O. Box 179
Norman, OK 73070

Email: joieso2@aol.com
or firstvp@oklaesa.org



**2nd Vice President/Educational Chairman
Tina Davenport-McKamie**

Happy New Year! Our ESA year is half gone, the Holidays have passed, and football season is over. Where does time go?

Many of the Oklahoma Chapters have presented outstanding educational programs. I love it when you fill my mailbox with Educational Reports. So, please send to me your Educational Reports before the April 1 deadline. Participate in the state education program and let others know what you are doing.

Any chapter presenting an educational program on my theme “**Get Fit Get Healthy**” will be eligible for the **State Educational Director’s Special Award**. To qualify, the chapter must report the educational to me using the regular Educational Report form.

Did you know that by submitting at least six timely Educational Reports, you can qualify for the **Gold Link Award**? I know your chapters are having great educational programs. I have been hearing about them. Where are those reports? You still have time!

A **Gold Seal Entry** is a notebook compiling all of your chapter education programs for the year. To qualify, a minimum of six timely reports are required, a completed Educational Report form submitted with each program, and a listing of all the resources used for your presentation. Also, as with all contests, state dues must be paid on or before January 1. The top three entries will be recognized at State Convention and will be forwarded to the IC Educational Director for IC judging.

Distinguished Athenian is one of the most honored and coveted awards. One Chapter Educational Director is recognized each year for outstanding educational contributions to their chapter, community and State Council. To be eligible for this award, the Chapter Educational Director must submit a Gold Seal Entry and be nominated by their Chapter President. Nominations should be sent to me and need to be postmarked on or before April 1, 2012. The nomination should include a brief description of the educational accomplishments of the Chapter Educational Director.

Everyone has done a Great Job with my theme “**Get Fit Get Healthy**”. I hope you have enjoyed it as much as I have.

*Tina Davenport-McKamie
2nd Vice President//Educational Chairman
8057 Blocker Road
McAlester, OK 74501
(H) 918-469-3420
(W) 918-426-3272
(C) 918-916-2199
tina@jimmyjwilliamspc.com
secondvp@oklaesa.org*



EDUCATIONAL: Health Benefits of Water
Tina Davenport-McKamie

Water is crucial to good health. Water is the human body's principal chemical component and makes up about 60 percent of your body weight. Every system in your body depends on water; because, water flushes toxins out of vital organs, carries nutrients to your cells and provides a moist environment for skin tissues. Other health benefits water may provide includes regulating body temperature and increases metabolism.

Every day you lose water through breath, perspiration, etc. For your body to function properly, you need to replace this water by consuming beverages and foods that contain water. Eighty percent of our water intake comes from beverages but the other 20 percent comes from food. Fruits such as strawberries, cantaloupe, and grapefruit, and vegetables such as broccoli, cucumber and spinach are more that 90 percent water. Including a lot of fresh produce in your diet will put you closer to your water goals.

Water suppresses the appetite naturally and helps the body metabolize stored fats. Studies have shown that a decrease in water intake will cause fat deposits to increase, while an increase in water intake can actually reduce fat deposits. The kidneys can't function properly without enough water. When the kidneys don't work to capacity, some of their load is dumped onto the liver. One of the liver's primary functions is to metabolize stored fat into usable energy for the body.

Water also helps to maintain proper muscle tone by giving muscles their natural ability to contract and by preventing dehydration. It also helps to prevent skin from sagging that usually follows weight loss.

So, how much water is enough? On average, a person should drink eight 8-ounce glasses every day. However, a person's water intake is affected by age, weight, activity level, and environment. Water should preferably be cold. It's absorbed into the system more quickly than warm water. And some evidence suggests that drinking cold water can actually help burn calories.



**Corresponding Secretary
Sue Knight**

Just a reminder to get your "camera ready" ad for the Convention Program. See the November/December issue for additional information. Also I would be most happy to compose the ad for you if you wish. Just send me the money for the size of ad you want and a bit of information that you want included. I will do the rest. Let's all "Get Dancin" in the New Year and ready for ESA in the Country.

*Sue Knight
Corresponding Secretary/Advertising Chairman
26202 S. 4180 Rd.
Inola, OK 74036
(H) 918-543-2379
© 918-638-6773
dsknight53@tds.net
correspsecretary@oklaesa.org*



**Petticoat Journal Editor
Rita Hains**

Our last issue of the Petticoat Journal, the April/May issue, is fast approaching. The deadline for submissions for that issue is MARCH 10. If your chapter has not sent in an article this year, then the last issue will be the perfect opportunity to recap your activities. Pictures are always appreciated and make the PJ even more fun to read.

The next issue will also feature the candidates for offices on the State Board. If you have members who are interested in serving please see the nominating form under 1st Vice President, Joyce Gibson's article.

I look forward to seeing everyone at Convention!

*Rita Hains
Petticoat Journal Editor
106 E. 13th St.
Sand Springs, OK 74063
(C) 918-760-4661
(W) 918-619-4722
Rita-Hains@ouhsc.edu
pjeditor@oklaesa.org*



Project Director
Margaret Kramer



To: ESA Santa's

From: Margaret Kramer
Project Director

Date: December 15, 2011

Subject: **Thank You**

Ladies words cannot express my thanks for all that you have done to make Christmas so very special for the children that you sponsor at the OK Schools for the Deaf and Blind.

I had the privilege of delivering gifts to both schools last Wednesday and it was such a joyous experience to watch the children as they opened their gift and received what that had wished for or a gift card that would afford them the opportunity to get what they desired.

All of you are a blessing to ESA, the children and all the other projects you and your chapters support. It warms my heart to know that my world is a better place knowing that you are all part of it.

May you and your families have a special holiday season filled with love, peace and fond memories, from my house to yours.

*Margaret Kramer
Project Director
Rt. 6, Box 6131
Eufaula, OK 74432
(H) 918-689-4925
(C) 918-61-3130
mghnurseok@oal.com
projectdirector@oklaesa.org*



CARE CONNECTION/HOPE FOR HEROES CHAIR
Peggie Sprinkle



THANK YOU to all the chapters who participated in the November *Hope for Heroes* National Event!!!

The following chapters and members have reported these events this year:

1. Sigma Chi Chapter of Inola: with Claremore Blue Star Moms honored Veterans at Inola Elementary School, provided yellow ribbons, flags, items & money to be sent to our military overseas for the holidays.
2. Beta Gamma Chapter, Eta Mu Chapter, Gamma Delta Chapter, Kappa Alpha Chapter, Omega Pi Chapter of the Tulsa Area Council with Epsilon Kappa Chapter of Hominy: participated in the City of Tulsa's Veterans' Day Parade and 12 large boxes of items collected were mailed to Oklahoma military personnel for the holidays.
3. Gamma Pi Chapter of Inola: donated items to Blue Star Moms.
4. Epsilon Kappa Chapter of Hominy: has been supporting "The Hugs Project" all year long.
5. The Tulsa Area Council & Alpha Rho Chapter of Broken Arrow: provided 5 Thanksgiving baskets with gift cards to the Tulsa Military Order of the Purple Heart.
6. Oklahoma State Council Executive & General Board members: donated \$100.00 for the 'Blazing Run for Freedom' benefiting "The Hugs Project".
7. Robin Brown, Theta Tau Chapter of Kingfisher: coordinated the collection of items for 'Boxes for Heroes' from the children of James Griffith Intermediate School in Choctaw - 10 boxes were sent to Oklahoma military personnel.

Please remember to report to me any projects/donations you or your chapter are doing to support our military personnel, their families and veterans - use the report form or email me. Honoring our military is something you should be doing all year long. Oklahoma sisters know how important it is to pray and support all our past/present military! God bless you and God bless America!

Peggie Sprinkle
Care Connection Coordinator
8201 E. Norman St.
Broken Arrow, OK 74014
(C) 918-813-3382
peggieokesa@cox.net
careconnection@oklaesa.org



Convention Janice Shockley

2012 Convention

PACK YOUR BAGS; IT'S TIME TO GO TO CONVENTION!!!! Well, almost. The promise of spring is just around the corner and so is the 2012 convention. Have you met all the deadlines yet?

1. **\$85.00 convention registration to Robbin Brown due by April 13, 2012**
2. **\$ 79.00 per night +tax hotel reservations at the Holiday Inn in Norman due by April 13, 2012**
3. **Convention ad (cost ranging from \$12.50 to \$100.00) to Sue Knight due by April 1, 2012** (I still have a hundred dollar bill to give to the person selling the most ads that total to the most money)

Forms for the above are published in this issue of the P.J

It's going to be a fabulous weekend in the country on **April 27, 28, and 29, 2012**. You don't want to miss out on the opportunity to mingle with all of the country characters that have been working so hard to make "ESA In The Country" a great convention. Beta Mu, Delta Kappa, Sigma Chi and Zeta Gamma want each and every one of their sisters to come to convention to make this country weekend even more fun.

I promise there will be something entertaining, enjoyable and educational beginning with the workshops and candidates skits and mixer on Friday and ending with the brunch on Sunday morning. There will also be some new angles on things and a few surprises. Of course you won't know what those surprises will be unless you attend. A tentative agenda will be published in the next issue of the P.J.

Let's all meet for a fun weekend in the country –that's "**ESA In The Country**".

I will keep you posted as the events unfold.

*Janice Shockley
2012 Convention Chair
2405 Weatherford
Norman, OK 73071
(H) 405-321-5907
gandjshock@sbcglobal.net
convention@oklaesa.org*



2012 Oklahoma State Convention - "ESA IN THE COUNTRY"

April 27, 28, & 29, 2012



Room rate of \$79 plus tax per night – Reservations due by Friday, April 13

Free Parking - Free hot buffet breakfast

2012 Oklahoma State Convention - "ESA IN THE COUNTRY"



ESA for St. Jude's Judi York

It has been a great year so far for Oklahoma and St. Jude. We have had Dream Homes, Radiothons, Runs, Saddle up for St. Jude, Mall Walks, Memphis Marathon, etc. Thank you to each of you who have participated or donated to St. Jude this year.

We are very excited about the Oklahoma Dream Homes. Ground has been broken on the Oklahoma City and Tulsa Dream Homes and construction is underway. Tickets go on sale March 1, 2012.

Please send the reports on your activities and donations for St. Jude. I have only received a few in the mail and I would love to have something from every chapter in the state. The deadline is April 1, 2011.

Judi York
ESA for St. Jude's Coordinator
908 Sweet Gum
Broken Arrow, OK 74012
(H) 918-252-1207
(C) 918-605-2860
jyork@yorks.com
circleoflife@oklaesa.org



**ESA Foundation Counselor
Ramona Paine**

This is a trivia quiz on the ESA Foundation.

1. Do you have to be an ESA member to belong to the ESA Foundation?
2. Where do I find information on Grants?
3. If I am an ESA member or an ESA Foundation member, am I eligible for a grant or scholarship?
4. How many scholarships did we give the first year and how many did we give in 2011?
5. How many endowments do we have?
6. Who was Dixie Palmer?
7. How much money does it take to establish an endowment?
8. Do I still have to pay dues if I am a Life Active member?
9. What does it cost to be a Life Active Member?
10. Where does the Life Grant Money come from?
11. If I forgot to pay my dues by March 1 and send them in March 15 can I vote at the annual meeting the following July?
12. Who do I contact if I have a question about scholarships?
13. How much is the new member fee?
14. Where do I send my dues?
15. How many ways are available to become a planned giver?
16. I am an ESA Foundation member, may my child or grandchild apply for a scholarship?
17. If donations to an endowment ceased, what happens to it?
18. What do we mean by endowment?
19. What do we mean by scholarship?
20. How many elected Directors make up the Foundation board?
21. How much scholarship money has been given since 1980?
22. How much scholarship money was awarded this year?
23. What is the Fantasy Event?
24. What is the CFC?
25. Who can contribute to the CFC?

Answer may be found on page 23 of this issue.

*Ramona Paine
ESAF Counselor
604 W. Wheat Capital Road
Enid, OK 73701
580-242-0741
Ramona.paine@gmail.com*



**Outstanding Youth
Nellrita Barrick**

March 1st is the deadline for entries for the Outstanding Youth Contest. Don't delay in going forward with meeting with your local school officials/counselors with the necessary information and materials with a challenge to participate in this highly successful program by ESA. Entry packets for the State contest are available at www.oklaesa.org or by contacting the State Contest Chairman at contest@oklaesa.org or Outstanding Youth Chair at snbarrick@att.net. Oklahoma entries are to be mailed to Oklahoma Outstanding Youth Chair, Nellrita Barrick at 119 The Hills in Clinton, OK 73601.

*Nellrita Barrick
Outstanding Youth
119 The Hills
Clinton, OK 73601
(H) 580-323-2728
(C) 580-331-8803
snbarrick@att.net
outstandingyouth@oklaesa.org*



**Philanthropic
Darla Barton**

Happy New Year Sisters!!

I hope everyone had a very special Christmas and an amazing New Year.

Well, I don't have anything new to report; just that time is getting closer for convention. And that means award time is coming in a few months. Thanks to all of you who are sending your Philanthropic points in regularly. I'm looking forward to receiving all of the others.

Blessings to all!!!

*Darla Barton
135 Rawlings
Clinton, OK 73601
(H) 580-323-3493
Darla_barton@sbcglobal.net
philanthropic@oklaesa.org*



**Publicity
Leslie Farabee**

Hello, Sisters!!

Hope everyone is surviving the aftermath of the holidays and welcoming 2012, with happiness, love, and good health!

For those chapters who plan to enter in the PUBLICITY CONTEST, I need your help. Please submit articles and/or photos to PJ, Jonquil/ESA website, local newspaper, etc. Once they are published, send me that article and the Publicity Contest form. These publications give your chapter publicity chairman points toward their New Folder books, they submit to me. Please go to ESA OK Website, www.esaokla.org and look at the Publicity Contest judging sheet. This will give you more information. Please submit both the article and form, with each article. Encourage your chapter to submit a News Folder book to me of your chapters activities published. This should be a News Folder only, not a scrapbook.

REMEMBER THAT ALL INFORMATION IS DUE APRIL 1, 2012.

FULL compliance of the Publicity Contest Form will be judged & counted. Thank you!

*Leslie Farabee
Publicity Chairman
807 N. Elm St.
Owasso, OK 74055
(H) 918-272-6085
lesliefarabee@cox.net
publicity@oklaesa.org*

**International Council President
Rose Pasillas**

FEBRUARY – “ESA ...Helps Fight Loneliness Month”

Heart To Heart

We have begun the final 6 months of our Epsilons Sigma Alpha International Year. Still, we have lots of work to do and fun times ahead beginning with this month. Yes, February is a great month! We have many opportunities to celebrate this month; My birthday on the 4th; Super Bowl Sunday on the 5th; Presidents’ Day on the 13th; Valentine’s Day on the 14th; Mardi Gras on 21st. Etc, etc...And this year we get an extra day on the 29th – Leap Year Day!

Let’s take the opportunity to share these days with someone else. Yes, “Make the Difference” in someone’s life this month by calling them or going to visit them on at least one of these great days this month.

You just can’t imagine the someone’s life by just phone call, or visit. You will those who perhaps have had no kindness of your heart will be long time. Invite that person members and invite MALs in and visit someone who might the kids. This is something that



effect you can have on remembering them with a card, bring many smiles to the faces of real reason to smile lately. The remembered by them for a very to come with you and your chapter your area to join in with you too need cheering up or a visit. Bring the whole family can do together.

Let’s make February –“ESA ...Helps Fight Loneliness Month.”

Here are just a few things you can do.

- Visit someone in the hospital, prison, or in a nursing home
- Offer a listening ear to a troubled teen or a friend going through hard times
- Bake some cookies with the kids and take them with a meal to that elderly neighbor and stay a few minutes just to talk

There are many, many, many other things you can do. The key word is **DO**. Don’t leave it to someone else. That is why ESA...Makes the Difference, because of what you **DO**. Share a bit of love from heart to heart.

*Rose Pasillas
IC President*

Chapter Chatter



Beta Iota #4283 McAlester

Margaret Kramer & June Miller proudly show the Christmas presents for Beta Iota's Christmas family. Spending the day shopping and delivering the gifts was well worth the time spent when they saw the look of wonder on the faces of three of the four children the presents were for....ages 16 to 7. The 16 year old was at work at McDonalds!



Christmas is a lovely memory. The New Year has begun. We will be at the OSB Tour and support our own Margaret Kramer, Project Director. Then begin working hard on the Miss McAlester Scholarship Pageant. And can you believe it? The Convention will be here before you know it and our Tina McKamie will be installed as First Vice President!

June Miller



**Beta Psi #0498
Clinton**

We are enjoying the educational programs that are in keeping with the chair, Linda Southerland's theme on traveling. Our guest presenter last month was Carolyn Waltrip from the Alpha Nu chapter in neighboring Arapaho. She told of their colorful-late autumn motor coach trip through the Ozarks, highlighting Tyson's Cooperative Farms. Tyson has a complex with 10 kitchens where five of them are replicas of their buyers, e.g., McDonald's, Wendy's, etc., making sure that the finished products coming from each particular kitchen is exactly like what the customer purchases from the respective restaurant. We are looking forward to Billye Peterson's upcoming travel talk on her cruise of the Mediterranean Sea.

It was heartwarming to receive such a gracious letter from Brandy Shepard thanking us for the donation to aid her with expenses for she and her young daughter, Jade, to purchase necessities for their out-patient barracks close to the Walter Reed Hospital where her wounded husband, Sgt. Tom Shepard, is in extended physical therapy for wounds and amputation received from the war in Afghanistan. An excerpt from her letter reads: "I think the 'HOPE FOR HEROES' is a wonderful project and definitely made a difference to our family in a time of need." Beta Psi member, Roberta Wermey, reported that her son, Kris, did receive his package just before Christmas.

Our next event is a salad dinner and recognition program for our DIANA Award winner, Lynda Richert. Then the fun continues as we have our annual Valentine Dinner/Card Party. Darla Barton and Rhonda Scott are working on Beta Psi's Outstanding Youth Award.

Busy Times! Great ESA Times!!

*Nellrita Barrick
Publicity Chair*



**Beta Zeta #3158
Oklahoma**

Beta Zeta members Aletha Bolt and Billie Fritch worked at the St. Jude Give Thanks walk in November. Had a big turnout around 450 ,registration went much smoother due to a new revised form and the walk brought in about \$30,000 for the kids.

We had our annual Christmas breakfast and party in early December; we have been going to the Hometown Buffet for the last several years-no cooking, no cleaning up, just good food. We go as soon as they open, push a couple of tables together , eat and then have our gift exchange, visit awhile and go our merry ways without the extra effort we'd have at the president's home.



Aletha and Billie went to the ground breaking of Oklahoma City's St. Jude Dream Home for 2012. It's going to be in a beautiful addition in Edmond again this year. Can hardly wait to see it as it's being built. We had the chance to visit with Mandy Ward, the ALSAC rep we work with on the house and she gave us some exciting news. She is expecting on June 27th and the giveaway of the home is June 24th. Might be more excitement than we were expecting.

Billie Fritch



Chi Epsilon, #5149
Talihina

Hey, the ladies of Chi Epsilon, Talihina are still down here. We just don't get to get over the mountain very often. We've been working on a cookbook and it's done. Anyone wanting one, just let us know. They are \$10 each. E-mail joyce3500@sbcglobal.net.

We had a great reveal-Christmas party at Karen England's house. She goes totally wild and crazy when it comes to decorations. We loved it. Six members of Joyce James and Debbie Crank's family took a Christmas trip to Branson, MO. That was a wonderful time. Joyce had been pretty sick, but she wasn't about to miss that trip. Thinking about making valentine cookies again this year (groan) if we can't sell enough cookbooks. Hope to see everyone soon.

Joyce James



Gamma Pi #5091
Inola

Gamma Pi's booth at the Craft Fair in November and the Holiday Home Tour in December were both successes. We always look forward to these activities each year.

Several of our members were able shop for and deliver Christmas presents to the three students we sponsor at the Oklahoma School for the Blind. Arik, Jessie, and Justin were all pleased with their gifts and it is always a joy to be able to visit them each year. Justin put on a show for us in his Moon Boots.



We are busy making plans for a Bingo, January 28th to benefit the Special Ed Class at Inola Elementary. Funds will be used to send students to Special Olympic Events. We are also making plans for our Rush Tea in February, annual Bingo in March and Spring Garage Sale in April. We continue to make take bud vases of flowers to the Senior Citizens Center and Inola Health Care twice a month.

We are looking forward to 2012 and all the activities we have planned to benefit our community.

Mary Adams



**Zeta Gamma, #4253
Shawnee**

Happy 2012 to our Oklahoma sisters! What a year we had & look forward to another year of fun & good health!

December was a busy month. Robbin along with State President GwynnNell went to the TAC Christmas dinner. As always, we had a great time at Freddie's Restaurant.

Zeta Gamma girls went to the Benedict Street Deli once again for our Christmas party. Everyone had a great time playing dirty Santa with Christmas ornaments. Then off the Sulphur to visit our sponsored kids and a trunk load of goodies was Robbin, daughter Andrea, granddaughter Lily & a friend Stacey. It was wonderful to watch all the kids open up their presents.

As part of Lora's educational theme, S.E.A., Zeta Gamma sisters will travel to Luther to watch our Mary Voss and Sharon Voss play in a basketball game...GO LUTHER!!! Joe & Lola Jaegers' celebrated their 54th anniversary at the home of Howard & Lora Thompson. Joe is doing much better but it will take time to heal. Gwen had surgery again but she also is doing much better. Please continue prayers for Joe & Gwen as well as Lola's daughter Jennifer.

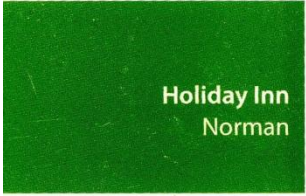
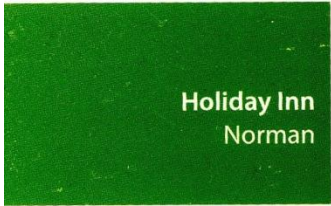
See you soon.

Robbin Brown
Publicity Chairman



ESA FOUNDATION QUIZ ANSWERS:

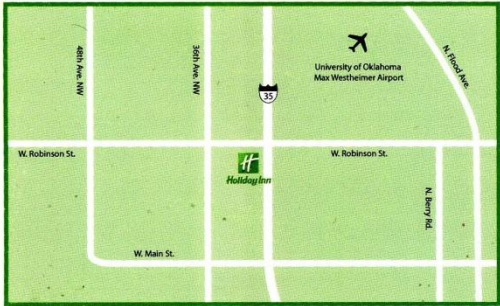
1. No
2. ESA Foundation website
3. Yes
4. First year – 3 this year – 165
5. 173
6. She and her husband Robert Palmer were at one time the owners of ESA
7. \$100
8. No
9. \$500
10. Life Active Membership dues
11. No
12. Kathy Loyd/Scholarship Chairman/State Counselor
13. \$25
14. ESA Foundation Headquarters
15. 8
16. Yes
17. It will continue to earn interest on the fund balance
18. An endowment is money vested
19. Scholarship is money that is given from endowments to winning students
20. 8
21. \$1,716.052.95
22. \$176,450.00
23. Non-event fund raiser
24. Combined Federal Campaign
25. Federal employees



Just the Place for You

The Holiday Inn Norman is located on the west side of the I-35 corridor in what is considered to be the desirable "west side." Within minutes of the hotel, there is everything you could desire.

- 150 Guest Rooms
- Spacious Suites
- Microwaves & Mini *Refrigerators in all rooms
- Large Indoor Pool & Whirlpool Spa
- Exercise & Fitness Center
- Business Center
- West Side Bar & Grill Featuring American Cuisine including Steaks, Seafood & Fine Wine



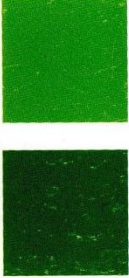
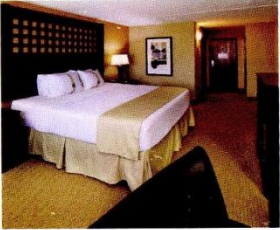
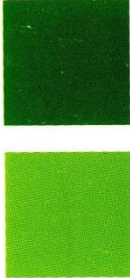
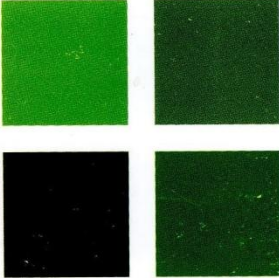
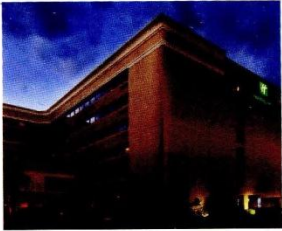
How to Find Us

From North: Go south on I-35, exit 110A/Robinson Westbound. Continue on Interstate Drive through stop light. Hotel is on your right.

From South: Go north on I-35, exit 109/Main Street Westbound. Merge onto West Main Street. Turn right on North Interstate Drive. Take the 1st right to stay on North Interstate Drive. Hotel is on your left.

What is Waiting for You

- The Sooner Mall, Hollywood Theaters, Andy Alligator's Fun Park, Cobblestone Creek Golf Club
- restaurants such as Saltgrass Steakhouse, Cracker Barrel, Yomato's, Red Lobster, and many more
- In addition, we are only 4 miles from the University of Oklahoma.



Holiday Inn Norman
 1000 N. Interstate Drive, Norman, OK 73072
 P: (405) 364-2882 | F: (405) 329-1525
holidayinn.com/normanok ■ 1-800-HOLIDAY (1-800-465-4329)

©2008 InterContinental Hotels Group. All Rights Reserved. Independently Owned and Operated by Premier Hospitality Management, Inc.

Convention Program Ads



“ESA In The Country”
Oklahoma State Convention
April 27, 28, & 29, 2012



Now is the time to send in your camera-ready copy to appear in the 2012 Oklahoma State Convention Program.

Space is available for your special ad to honor your chapter, secret sister, Board members, and anyone who is near and dear to you.

Business ads will also be a great way for them to have statewide advertising and promote their business.

Pricing will remain the same as in the past and is listed as follows.

Full page	\$100.00
$\frac{3}{4}$ page	75.00
$\frac{1}{2}$ page	50.00
$\frac{1}{4}$ page	25.00
Business card	12.50

******Ad Deadline – April 1, 2012******

Remember---- \$100.00 goes to the member who sells the most ads that totals to the most money

**Send your ad to: Sue Knight
26202 S. 4180 Rd.
Inola, Ok. 74036**

Advertising Sales Sheet

This form must be completed and submitted with the ad copy

Organization: Oklahoma State Council of ESA

“ESA In The Country” 2012 Convention

Sue Knight, Advertising Chairperson

26202 S. 4180 Road

Inola, OK 74036

Make checks payable to: 2012 State Convention

1/2 Page

Name of person to contact if there are any
Questions concerning advertising.

Name _____

Chapter Name & #: _____

Daytime phone _____

Email _____

Ads for Convention Program

Full Page 8 1/2 x 11	\$100.00
3/4 Page	\$ 75.00
1/2 Page 8 1/2 x 5 1/2	\$ 50.00
1/4 Page 4 1/4 x 4	\$ 25.00
Business Card	\$ 12.50
Deadline – April 1, 2012	

Ads will be placed in the back of the Convention Program book and will be printed in the same ink and paper color as chosen for the other pages. Ad pages should be submitted **press ready**. However, if you would like for us to compose you ad,

1/4 PAGE

we will be most happy to do so.

Black/white line art prints best; photos and artwork with shades or screens are accepted, but do not print well.

Business cards convert easily into 1/4 page ads, but avoid cards with dark or colored backgrounds and colored ink.

Business Card

Oklahoma State Council 69th Annual Convention

"ESA in the Country"

April 27, 28 & 29, 2012

Holiday Inn Hotel – 1000 N. Interstate Drive – Norman, OK

Phone: 405.364.2882 – Registration Deadline Friday, April 13, 2012

www.holiday-inn.com/normanok


MEMBER NAME:		
ADDRESS:		CITY, STATE, ZIP:
PHONE:	FAX:	EMAIL:
CHAPTER NAME:	CHAPTER NUMBER:	CITY:
CHECK ALL THAT APPLY:		
<input type="checkbox"/>	CHAPTER PRESIDENT	<input type="checkbox"/>
<input type="checkbox"/>	EXECUTIVE BOARD MEMBER	<input type="checkbox"/>
<input type="checkbox"/>	CURRENT/PREVIOUS IC OFFICER	<input type="checkbox"/>
<input type="checkbox"/>	1ST TIME CONVENTION GOER	<input type="checkbox"/>
<input type="checkbox"/>	GENERAL BOARD MEMBER	<input type="checkbox"/>
<input type="checkbox"/>	CURRENT/PREVIOUS ESAF BRD	<input type="checkbox"/>
<input type="checkbox"/>	2011/2012 PLEDGE	
<input type="checkbox"/>	SOONER SENIORETTE	
<input type="checkbox"/>	GUEST	
SPECIAL DIET MENU/MEDICAL REASONS ONLY ** CONTACT: ** Janice Shockley- Convention Chair 405) 321-5907, 2405 Weatherford, Norman, OK 73071 (gandjshock@sbcglobal.net)		
MEN'S REGISTRATION:		
NAME:		HUSBAND/ESCORT OF:
DESA/ELAN REGISTRATION:		
NAME:		ESA MEMBER/CHAPTER:
GUEST REGISTRATION:		
NAME:		GUEST OF:
CHECK ALL THAT APPLY		
<input type="checkbox"/>	MEMBER'S FULL REGISTRATION FEE POSTMARKED BY Friday, APRIL 13, 2012 includes Friday night mixer, general assemblies, workshops, Recognition Luncheon, Banquet & Brunch	\$85.00
<input type="checkbox"/>	GUEST'S REGISTRATION FEE includes Friday night mixer and Banquet	\$40.00
<input type="checkbox"/>	DESA/ELAN REGISTRATION includes Friday night mixer, general assemblies, workshops, Recognition Luncheon, Banquet & Brunch	\$85.00
<input type="checkbox"/>	BANQUET GUEST FEE	\$40.00
<input type="checkbox"/>	LATE FEE	\$25.00
TOTAL AMOUNT ENCLOSED		

Enclose Check Payable to:

Mail Registration form and payment to:

2012 ESA State Convention Fund

Robbin Brown, Registration Chair

PO Box 946

Choctaw, OK 73020 Phone: 405) 390-2080

Robbesa4@tds.net

CANCELLATION: If you find it necessary to cancel this registration, the full amount less a \$15.00 processing fee will be refunded if your written cancellation is postmarked no later than the Friday, April 13, 2012 deadline. Registrations postmarked after Friday, April 13, 2012, will be assigned seating where vacancies exist. We cannot guarantee that late registrants will be seated with their chapters after Friday, April 13, 2012.

2011-2012 Calendar of Events

2012

Saturday, February 25

OK School for the Blind Tour
District III Meeting & Installation
District V Meeting & Installation
Muskogee

Saturday, March 10

District IV Meeting & Installation
Del City

Saturday, March 17

Executive & General Board Meeting
State Council Meeting
Norman

Saturday, March 24

District II Meeting & Installation
TBA

April 27-29

69th Annual State Convention
"ESA in the Country"
Holiday Inn Hotel, Norman – 405-364-2882
Norman