

Epsilon Sigma Alpha

INTERNATIONAL®

*Oklahoma State Council
2009-2010 Petticoat Journal*



Deb Hughes, President

Volume 58 Issue 5 April ~ May

TABLE OF CONTENTS

President	3
Second Vice President/Educational Director	4
Treasurer	
Petticoat Journal Editor	
District II Coordinator	
District III Coordinator	
District V Coordinator	5
Awards	
Circle of Life	
Contest	6
Convention	
Easter Seals	7
Membership	
Secret Sis Coordinator	
Scrapbook	8
ESA Foundation	
2010-2011 Officer Nominations	
President & Corresponding Secretary.....	9
First Vice President	10-11
Second Vice President	12-13
Treasurer	14-15
Recording Secretary.....	16-17
Project Director.....	18-19
Parliamentarian	20-21
Petticoat Journal Editor	22
Senior Past President & Junior Past President.....	23
District Coordinators.....	24
Oklahoma State Council Silent Auction.....	25
Oklahoma State Council Convention Agenda.....	26-27
Chapter Chatter	
Beta Gamma, Tulsa	28
Beta Iota, McAlester.....	28
Delta Chi, Midwest City	28
Delta Kappa, Norman.....	29
Gamma Delta, Tulsa	29
Gamma Kappa, Checotah.....	30
Kappa Theta, Guthrie	30
November Executive and General Board Minutes	32-33
March State Council Meeting Notice	34-38
IC President Jamie's Virtual Food Drive.....	39
2010-2011 Directory Information Form	40
State Council Nomination Form	41
2010 Convention Registration.....	42
2010 Convention Hotel Information.....	43

Deb Hughes President

I don't know about you but spring is my favorite time of the year. I enjoy the beautiful blooming colors and new growth which makes that late winter snow only a faint memory. Springtime reminds me that ESA'ers have much happening as chapters close one year and open another. I hope that as you plan your spring banquets, teas for students and Founder's Day events that you use these opportunities to invite others. We have an impressive record of service and it is important that we not hid the highlights of achievement. Introduce someone to ESA and allow them a unique ESA experience you have shared.

It is convention time. Are you registered? I surely hope so! The chapters of Alpha Rho, Beta Gamma, Eta Mu, Gamma Delta, Kappa Alpha, Omega Pi and Theta Sigma are waiting for your arrival in Tulsa on April 30-May 2, 2010. A variety of activities have been planned with you in mind. Plan to arrive early Friday so you can be settled in and ready for a few fun workshops in the afternoon. Our IC Representative Vickie Farris and Jacque Edwards have a special leadership workshop planned for the late afternoon; you won't want to miss it.

Of course Friday evening includes our silent auction with proceeds for Easter Seals, Circle of Life, and ESA Foundation in conjunction with our mixer. Saturday highlights will include special presentations, awards, Association of the Arts, business and even shopping. Yes that is correct, for the first time we will have available selected ESA merchandise to view, try on and purchase/order. Saturday evening includes the installation of the 2010-11 state officers and a time to celebrate Oklahoma's accomplishments for St. Jude Children's Research Hospital.

Contacts for special events at convention:

Flag Ceremony, we want every chapter represented in the opening ceremony: contact Robbin Brown or Linda Voss and let them know your chapter representative

Celebration of Life Service, we want to honor each member we have lost this year: contact is State Chaplain, Mary Toole

St. Jude presentation, we want each chapter represented to highlight their accomplishments: contact is Circle of Life Chair, Nellrita Barrick

Convention registration and hotel information can be found elsewhere in this issue or the state website: <http://www.oklaesa.org> then go to FORMS.

We have a brand new emphasis from our IC President Jamie Atchison asking each state to participate in a national food drive. Sadly Oklahoma ranks fourth in the USA with the number of residents that are "food insecure" which is defined by the USDA as being hungry at times during the year due to lack of money. Unfortunately this includes a huge number of children. You can bring food items or donations to our OK State Convention or deliver to an appropriate organization within your own community. Each state keeps the food items and donations. More information and a [reporting form](#) can be found in this issue and our state website. This special drive will conclude July 1, 2010 in order for OK report to IC. If you need additional information on this program please feel free to contact me.

Be sure to register for IC Convention, July 12-18, 2010 in Minnesota. Information is available on our website or contact me. It has to be cooler in MN than OK in July and this can give you a highlight of what is to come in 2012 when OK proudly hosts IC Convention of our ESA friends. Watch for 2012 information from Cathy Holsted, 2012 Convention Chair.

This has been an incredible year for Oklahoma ESA. I am so proud of your individual and chapter accomplishments. You have worked hard for the varied projects within our local communities, our two state projects, Easter Seals and St. Jude Children's Research Hospital. I am honored to serve as your state president; thank you for this opportunity. Each chapter meeting, event, social and project that I have shared with you has enriched me beyond my wildest dreams. You are indeed shining stars! I continue to **Believe** in you.

"Promise me you'll always remember you're braver than you believe, stronger than you seem, and smarter than you think, said Christopher Robin to Pooh"



**Believe
-Deb**

president@oklaesa.org
debokesa@hotmail.com

Facebook as Deborah Hughes

**Gwynn Nell Swanson
Second Vice President
Educational Director**

By the time you read this, the deadline of April 1st for your educational book for contest will be over. I do hope that you did get your Educational book sent to me on time.

I have really enjoyed reading about your educational this year. Several did an educational on my subject "Oklahoma Historical Landmarks". You did a great job of traveling and exploring our wonderful state.

Good luck with your Educational entry and I will see you at State Convention.

**Joyce Gibson
Treasurer**

The Groundhog saw his shadow. That means we have 6 more weeks of winter. We might need to move to Aruba! Beaches and sun anyone?

It is time again for State Convention. Maybe all that fun will help us keep our minds off of the weather.

Officers and Board members, have your vouchers and receipts been submitted? They must be submitted before convention. If you have not turned in a voucher and receipts for your expenses, please turn them in as soon as possible. I will be closing the bank account April 26,2010. I will not be able to issue any checks after that.

Thank you to those that have paid your state dues. If you have not paid state dues, they can be sent to me at: P.O. Box 179, Norman, OK 73070. State dues are \$30.00 per chapter plus \$3.00 per chapter member. Thank you for your support of ESA Oklahoma State Council. Hope to see you at State Convention.

**Jennye Hickman's Angel Team
Petticoat Journal**

This is our final issue of the PETTICOAT JOURNAL! We are excited! Hope you all enjoy this one. Thank you for all your reports. You are the ones who make the PJ interesting. We will see you at State Convention.

**Dr. Billye Peterson
District II Coordinator**



**ESA ... Footprints of
Leadership**

What a great theme our new District II coordinator, Nellrita Barrick from Clinton has chosen. If you missed our District II meeting and installation of officers on Saturday, March 27 in Clinton, you missed a fun time. And if you missed our meeting, you missed out on learning 25 ways to use coffee filters and 44 ways to use WD-40! Curious? Just email me and I'll send you the handouts.

Congratulations to our new District II officers for 2010-2011: Coordinator Nellrita Barrick, Beta Psi, Clinton; Vice-Cordinator Sylvia Ochs, Kappa Theta, Guthrie; Secretary Linda Southerland, Beta Psi, Clinton; Treasurer Cathy Holsted, Theta Tau, Kingfisher; Parliamentarian Dr. Billye Peterson, Gamma Zeta, Edmond.

I've enjoyed being your District II Coordinator this year.

**Cheryl LaMascus-Young
District III Coordinator**

Hello ESA Sisters!

I hope that everyone had a wonderful time in Muskogee at the OSB tour. District 3 had a wonderful meeting and Rosemary's installation was lovely. Thank you to Donna McCandless

for a very successful Silent Auction that will benefit the District 3 project, Clarehouse.

I want to thank everyone at the school for their hospitality – it was superb as always. I also want to give a great big thank you to the hard working ladies in the cafeteria for another excellent lunch.

This District 3 year is winding down and I look forward to seeing all of you at the Radisson Hotel Tulsa for State Convention.

Thank you District 3 for a wonderful year!

***Elaine Ockletree
District V Coordinator***

The District V Meeting was held at OSB February 27 with Amber Alexander, Vice Coordinator, conducting the meeting since Elaine Ockletree is ill and in the hospital. Margaret Kramer, Parliamentarian, presented nominations for 2010-2011 officers. The following ladies were elected: Jeanne Meyer, District V Coordinator, Ruth Thompson, Vice Coordinator, Amber Alexander, Recording Secretary, and Ruth Jo Carnagey, Treasurer, Elaine Ockletree, Parliamentarian. Kirby Thomason was appointed Project Director. June Miller was the installing officer. District V members agreed that the Kelly B. Todd Center should continue to be the District V project.

***Janet Gray
Awards***

Spring is almost here and the time is growing short. If you take time to smell the flowers and reflect on the past year in ESA, I would bet that each of you can sit down and write a 300 or less word essay, "What ESA Means to Me" for either one year or more or under one year category.

You need to submit it by mail, and send it to

me at PO Box 1366, Sapulpa, OK 74067. Deadline is on or before April 1, 2010. Your entry must be postmarked no later than April 1. ESA means so many different things to each individual. We would love to hear what makes ESA special to you.

Requirements: Essay should typed, double space on 8 ½ x 11 paper. Submit 2 copies (1 in a folder and cover page with each copy).

I also want to remind you to send me the name of your members and chapter with their years of service to highlight at the convention and their Pallas Athene and First Pearl status.

Enjoy the upcoming spring and join us for the 2010, "ESA, It's in the Bag" State Convention, April 30, May 1 & 2nd.

***NellRita Barrick
Circle of Life***

I can hardly believe it was just over a year ago when Deb Hughes called me and said something like, "Could you? Would you?" So, off to Memphis I went to the Annual Circle of Life Training Seminar for the first time to be held on the campus of St. Jude Children's Research Hospital. I came home motivated, yet I had cold feet. What an undertaking!

Then in July, it was off to San Antonio for IC. To converse with Donna Young and Marcie Maxwell, administration from St. Jude, and to meet the two former and current patients from there was a heart-warming experience. The parade of placards representing different states' donations with the grand finale of ESA's total giving in 2008 - 2009 was more than inspiring.

Fall came and I was off to each of the District Leadership Meetings with my huge poster, little red wagon and my St. Jude Babes(dolls) reporting and promoting various fundraising events for the children of St. Jude. (Thank you, Linda Southerland for all your support and help.) The responses from those coming back

from the Tour of St. Jude was rewarding. Heck, I didn't get to go . . . surgery.

ESA Oklahoma, you have done a great job in 2009 - 2010 with Dream Homes, Telethons, Radio-thons, Walks, Runs, Grateful Grandparents, Saddle-Up, Math-a-thon, Pageants, Memorials, Honorariums, giving from you chapter budgets and individual monetary gifts. Awesome! Congratulations!

Soon it will be off to ESA Oklahoma State Convention and the highlight of our own 'Parade of Placards.' Just wait. You will be enthralled with the total sum that YOU have given to help the Kids of St. Jude.

See you there.

Maxine Wheelan Contest

By the time you read this the contest deadlines may be over. I wish each of you good luck, hoping all of you sent in reports to the various chairmen.

As I have reminded all of you that most of you don't report to win any special awards, but because you want to support Easter Seals, St. Jude, The State Project and all the many other worthwhile causes that you each have in your own communities.

By reporting it benefits everyone, because it lets everyone know, not just in ESA but in other organizations, all the good things that ESA does. So again, I hope all of you reported and when you do win an Award let everyone know how happy you are because you worked hard to earn it.

Thanks to all of you

Judy York Convention

The Convention Committee for "ESA...It's In The Bag" is getting very excited about welcoming you to Tulsa on April 30, May 1 & 2, 2010 for the Oklahoma State Convention. We have lots of fun and surprises planned for you.

Our Registration Chair, Sandy Saunders, is waiting by her mailbox for your registration. Her address is: 7905 N 144 E Ave, Owasso, OK 74055. You will find a form elsewhere in this PJ. The **deadline for registration is April 15, 2010**. The Radisson Hotel is ready for your reservations, with a room rate of just \$92.00 and the parking is free. Call 918-627-5000 and let them know you are with ESA.

On Friday there are several fun Workshops, like how to save money on everything and how to mix up that special drink. And you won't want to miss the workshop Friday afternoon presented by our IC Rep, Vickie Farris. On Friday evening the Fajita buffet before the mixer, for an additional cost of \$25.00 per person, is not to be missed. So don't forget to mark it on your registration form. Following the buffet will be a mixer, which is bound to be lots of fun. You will see your candidates for state office in a new light. There will also be a silent auction to benefit the ESA Foundation, Easter Seals and St. Jude. And don't forget the Hospitality Suite. Your hosts Matt Farabee, John Stapleton and Steve York will be reaching in their "*Bag of Tricks*" to make sure you have a good time and are entertained. It will be the place to be when you are not busy with meetings.

On Saturday we will have a wonderful flag ceremony and 1st General Assembly. Following is the Recognition Luncheon. And Saturday evening will be the installation of officers and banquet. Sunday morning we will have a Celebration of Life, followed by brunch. It will be a wonderful weekend that you will not want to miss.

Your hostesses Alpha Rho Broken Arrow, Theta Sigma Jenks, Eta Mu Owasso, Beta Gamma, Gamma Delta, Kappa Alpha and Omega Pi Tulsa, are ready and waiting for you at "ESA...It's In The Bag."

Peggie Sprinkle
Easter Seals

Hello sisters – Time is running short for your contributions to Easter Seals Oklahoma. **Deadline is April 1st**. I have received contributions from the following chapters: Alpha Omega, Alpha Rho, Beta Psi, Beta Rho, Delta Epsilon, Delta Kappa, Epsilon Kappa, Gamma Kappa, Kappa Theta, Zeta Epsilon, Zeta Gamma.

The new fundraising campaign with Easter Seals and International is CAMP HOPE – to provide camping opportunities for children of military families. I encourage chapters/ members to consider supporting this project. As the largest provider of disability-related services to individuals with disabilities and their families, Easter Seals is positioned to offer military and veterans systems of care with viable options to support and augment current reintegration efforts including job training and employment, medical rehabilitation, adult day services, **camping and recreation** and child care.

At State Convention there will be a Silent Auction -"It's in the Bag!" Monies will be divided between Easter Seals, St. Jude and ESA Foundation. We would like each chapter to bring at least one bag. Bring bags to registration table starting at 5pm.

Please mail your contributions for Easter Seals Oklahoma and CAMP HOPE to 8201 E. Norman Street, Broken Arrow, OK 74014. See you at Convention!

Rita Hains
Membership Chairman

The year is almost over and we are looking forward to seeing all our new members from this past year at the State Convention in April. Please be sure to send me the names of all new members who will be attending so that we can honor them in a special ceremony. Congratulations to all the chapters who had membership growth this year. Job well done!!

Membership recruitment continues to be slow, but steady. Remember to invite co-workers,

family members, and friends to your social or philanthropic events to show them what ESA is all about. One suggestion I received was to hold your meetings at a local charity such as the Food Bank, have a short meeting and then get your members involved in helping out at the charity. You get a meeting, and educational on that particular charity, and volunteer hours all in the same night. And, it shows your guests what we are all about – fun, fellowship, and philanthropic endeavors. You can choose any place in your locale – charity facilities such as Emergency Infant Services or a Homeless Center – or a local place of interest such as a museum. If they don't have a room for your meeting, hold a short meeting beforehand and then carpool to the facility.

Another area for recruitment is past members. Contact those who left and invite them to one of your events. Circumstances in their lives may have changed and they may be ready to re-join. Always be sure to wear your ESA clothing & pins when out in public for any type of charitable event or chapter get-together. It's an easy way to get "publicity." One suggestion I received for recruitment at any event you hold in a public place is to have an ESA information booth and hand out shot glasses with "Give Us A Shot – ESA" printed on them. With the shot glass, be sure to hand out a membership card with a contact name and number. Let your community know all about ESA - who we are and what we do. We've been the best kept secret for too long!

See ya'll at convention!

Nancy Buck
Secret Sis Coordinator

Please remember to bring your gift or gifts to State Convention for your State Secret Sister....as this is the time to either "jump out and shout surprise" or slip it into her chair.... I have enjoyed this year and I am soooo anxious to know who "my SS " is , because she knows me so well. This is one of the "Funnest" times of State Convention.

**Leslie Farabee & Faye Rikkola
Scrapbook Co-Chairmen**

Deb's scrapbook of memories is filling up fast and we have enjoyed decorating your events. There is still time to send those pictures, invitations, notices, etc. to us. Deadline April 1. Please send labeled items for a 12x12 album.

Looking forward to presenting Deb's scrapbook at Convention!! Can't wait to see everyone there. Thank you to all the "PJ Angels".

**June Miller
ESA Foundation**

This has been a great year for the Foundation in Oklahoma. I just received my monthly report and \$490 has been contributed to the Fantasy Event. I am sure the next report will show an increase in that. We have two new Life Active Members – Mary Toole and Epsilon Kappa, Hominy.

I have just finished processing 418 ESAF Scholarship applications versus 385 last year.

BUT THE CURRENT BIG NEWS IS.....

THE "IT'S IN THE BAG" SILENT AUCTION FRIDAY NIGHT OF STATE CONVENTION. As you know the funds raised will benefit **CIRCLE OF LIFE, EASTER SEALS, and ESA FOUNDATION.** Please bring donated items for this auction to convention. Please put the item **IN A BAG** and put a picture or a list of the items inside on the bag. You may leave them when you register for convention on Friday between 1:00 pm & 5:00 pm. SEE THE SILENT AUCTION FLYER IN THIS ISSUE OF THE PJ.

Below is an addendum to the list of **paid ESAF members and chapters:**

ESAF MEMBERS WHOS INDIVIDUAL DUES WERE PAID AS OF 2-28-10

(This is an addendum to the list in Jan/Feb PJ)

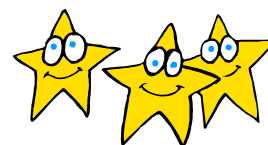
Maribel Moore, Alpha Epsilon, Enid
Ruth Tompson, Gamma Kappa, Checotah
Frances Mann, Beta Gamma Tulsa
Gwen Beasley, Zeta Gamma, Shawnee
Peggie Sprinkle, Beta Gamma, Tulsa
Lora Thompson, Zeta Gamma, Shawnee
Joyce Lacey-Kenney, Beta Psi, Clinton
Ramona Paine, Theta Tau, Kingfisher
Joy Agan, Beta Psi Clinton
Delores Armstrong, Theta Tau, Kingfisher
Gladys Murphy, Gamma Delta, Tulsa
Judy Cravens, Sigma Chi, Inola
Byrdie Emanuel, Gamma Delta, Tulsa
Helen Weaver, Nu Delta, Muskogee
Ruth Jo Carnagey, Alpha Theta, Muskogee
Patsy Timmons, Nu Delta, Muskogee
Katie Wamser, Beta Rho, Del City
Jane Fleming, Kappa Alpha, Tulsa
Nadine Moyer, Eta Epsilon, Skiatook
Mary Lou Haines, MAL Oklahoma
Janette Murray, Alpha Zeta, Pawhuska
Joe Drummond
Jeanie Williams, Beta Zeta OKC
Joe Bussey
Billie Fritch, Beta Zeta, OKC
Raymond Drumm
Dr. Billye Peterson, Zamma Zeta, Edmond
James Carnagey
Patricia Langdon, Delta Kappa, Norman
Joe Jaegers
Karen Nix, Delta Kappa, Norman
Donna Gibbs Crawford, Omega Pi

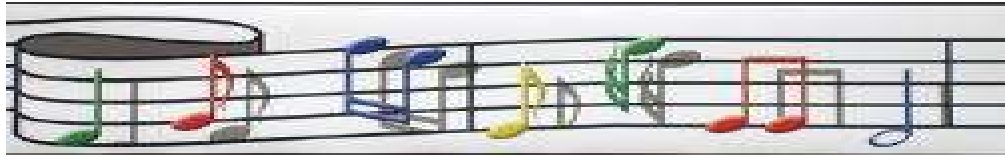
CHAPTERS WHOSEDUES WERE PAID AS OF 2-28-10

(This is an addendum to the list in Jan/Feb PJ)

Kappa Alpha, Tulsa
Kappa Theta, Guthrie
Tulsa Area Council
District V

SEE YOU SOON





***Oklahoma
State Council***

President

Jacquie Edwards

***Kappa Theta #5414
Guthrie***

2010-2011

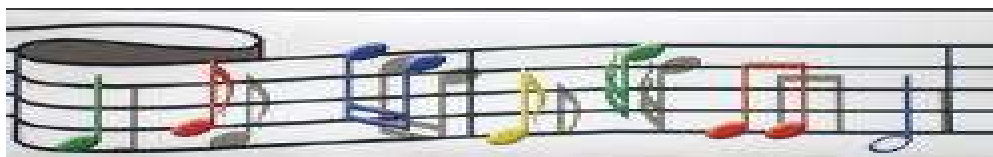


***Oklahoma
State Council***

***Corresponding
Secretary***
(Daughter)

Shelly Labus

***Kappa Theta #5414
Guthrie***



***Oklahoma State
Council***

1st Vice President

***Gwynn Nell
Swanson***

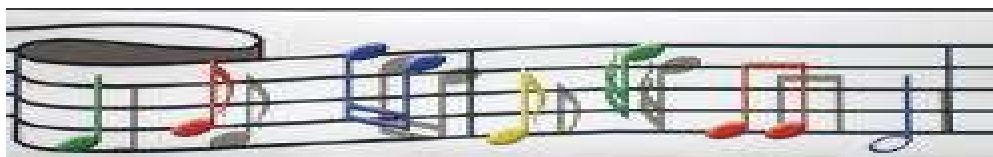
*Delta Kappa #3538
Norman*

2010-2011

I pledged ESA in April 1982 and have received my First Pearl and Fifth Degree Pallas Athene. My chapter has honored me as “Woman of the Year” and I have received the Chapter President’s Trophy. I have attended 27 State Conventions and 16 I.C. Conventions. I pledged 5 members and chartered Kappa Delta of Blanchard in 1982. I have lived in Blanchard over 50 years. I have been married to Dan for 49 years; have 3 children and 7 grandchildren. We ran a grade A dairy for 36 years and retired from that in 1996. I still help on the farm (disk, spring-tooth, harrow, drill, bale hay, haul hay), do canning, genealogy research, and love to ride my 4-wheeler, antique and travel. I have served on the Grady County election board for over 36 years as Precinct Inspector and have served as different offices in the Oklahoma AMPI Ladies Auxiliary, YHO and on the Oklahoma A-OK Cook Off board. I have taught myself how to type, run a computer, and keep records and many other skills.

I received the “Distinguished Athenian” Award in 2009, at State Convention.

I am very proud to be a member of ESA and how it has helped me throughout these years. I would be honored to serve as your State President.



Gwynn Nell Swanson

State: (Elected)

*2nd Vice President &
Educational Director
Treasurer
Recording Secretary
Petticoat Journal Editor*

State: (Appointed)

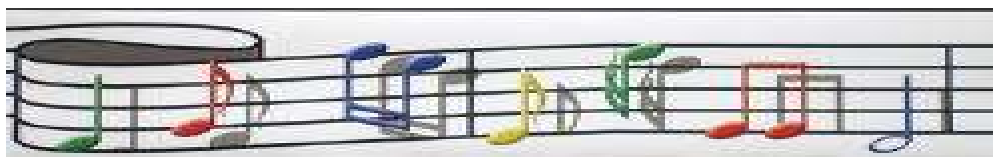
*Outstanding Chapter Chairman
Publicity Chairman
Corresponding Secretary
Awards Chairman
Easter Seals Chairman
History Contest Chairman
Yearbook Contest Chairman
Finance Chairman
Secret Sis Coordinator
Nominating Committee
Contest Committee
Convention Secretary
Convention Program Chair (2)
Other Convention Committees*

District IV

*Coordinator
Vice-Coordinator
Treasurer
Corresponding Secretary
Philanthropic Chairman
Educational Director
Jr. Past Coordinator
Nominating Committee
& Chairman*

Chapter

*President (3)
Vice-President/Rush
Secretary (2)
Treasurer (4)
Educational Director (3)
History (2)
Auditor (2))
Awards (4)
Budget
Numerous Other Committee*



***Oklahoma State
Council***

2nd Vice President

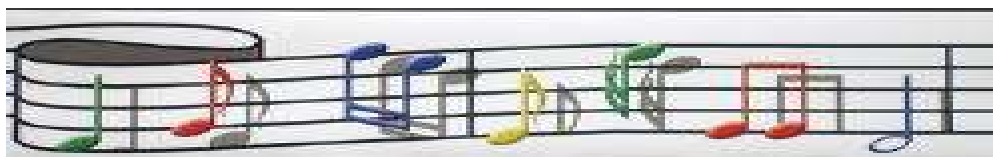
***Joyce
Gibson***

*Delta Kappa #3538
Norman*

2010-2011

I have been a member of Delta Kappa Chapter #3538 for 10 years. I am a Life Active member and a member of the ESA Foundation.

My recognitions are: Outstanding Pledge, First Pearl, 4th Degree Pallas Athene and Jonquil Society member (2 years).



Joyce Gibson

State: (Elected)

*Treasurer
Recording Secretary
Parliamentarian*

IC

*Several Foundation
and Easter Seals Committees*

State: (Appointed)

*Corresponding Secretary
Philanthropic Chairman
Easter Seals Chairman
DIANA Chairman
Outstanding Youth Chairman
Auditor*

State Committees:

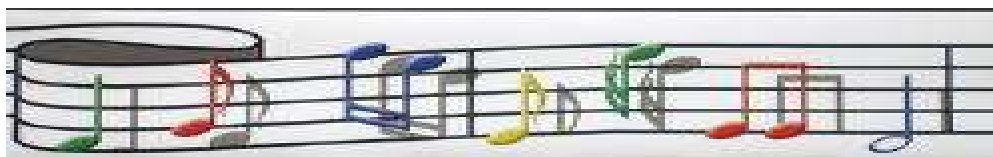
*Nominating
Convention*

District IV

*Coordinator
Vice Coordinator
Treasurer
Recording Secretary
Parliamentarian
Jr. Past Coordinator*

Chapter

*President
Vice President
Treasurer (3)
Recording Secretary
Parliamentarian
District IV Liaison
Outstanding Youth (2)
Awards
Educational Committee member
Convention Chairman (3)*



**Oklahoma State
Council**

Treasurer

**Tina Davenport
McKamie**

*Beta Iota #4283
McAlester*

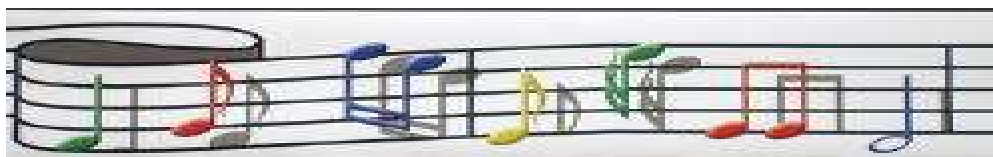
2010-2011

It is with great honor that I accept the nomination of State Treasurer for the Oklahoma State Council of Epsilon Sigma Alpha, International. I pledged ESA in September 2000. Thank you for allowing me to utilize my talents and strengths for the Oklahoma State Council.

I have received the First Pearl Award along with the 1st, 2nd, 3rd and 4th Degree Pallas Athene Awards and the Outstanding Eagle Award. I have pledged five members. And, I have attended eight Oklahoma State Council Conventions as well as two International Council Conventions. I have also coordinated successful fund-raisers on the state and local levels.

I graduated from Southeastern Oklahoma State University in May 1986 with a Bachelor of Science double major in accounting and computer science programming and again in May 1993 with a Bachelors in Business Education and Mathematics. I have 30 years of accounting and business experience. I have been employed with Jimmy J. Williams & Co., P.C.. in McAlester for fourteen years as a Senior Accountant and Firm manager. I also taught business and computer applications for 10 years at Kiamichi Technology Center in McAlester.

Carlis and I have been married since December 2003. We both share a love for the outdoors. My hobbies include a strong passion for horses, riding 4-wheelers through the mountains, fishing, and any other outdoor activity as well as sewing, crafts and photography.



Tina Davenport McKamie

State: (Elected)

*State Project Director
Petticoat Journal Editor*

State: (Appointed)

*Corresponding Secretary
Circle of Life Chairman
Give Thanks Walk for
St. Jude Chairman (2)*

District

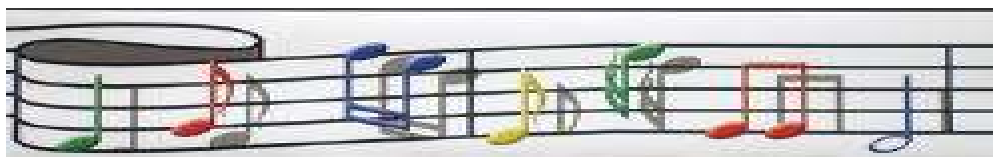
*District Vice-Coordinator
District Secretary*

Chapter

*President (2)
Treasurer (5)
Parliamentarian (2)
By-Laws Chairman
Jonquil Girl (3)
Philanthropic Chairman
Ways & Means Chairman
Philanthropic Chairman
Publicity Chairman
Yearbook Chairman
Scrapbook
Miss McAlester Treasurer*

Chapter Committee Member

*Ways & Means
Yearbook
DIANA
Outstanding Youth
Philanthropic
Christmas Tour of Homes Chair
Miss McAlester Program (5)
Miss McAlester Judge's Comm.
Miss McAlester Publicity
Ways & Means for Convention 2006*



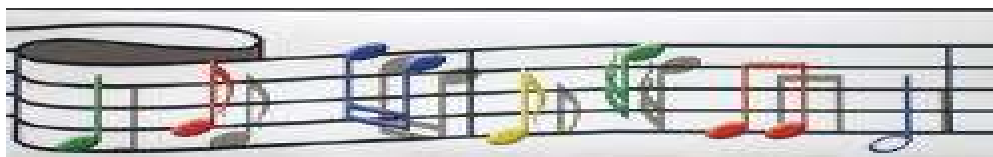
***Oklahoma State
Council
Recording Secretary
Linda
Southerland
Beta Psi #0498
Clinton***

2010-2011

I am pleased to accept the nomination to run for Oklahoma State Council Recording Secretary. If elected, I will do my best to do a good job.

I worked for Clinton Public Schools for 38 years prior to my retirement in June of 2007 and for 25 years I was School Board Minutes Clerk so I am very familiar with the concept of listening and recording minutes.

I have been a member of Beta Psi #0498 chapter since 1987.



Linda Southerland

State: (Elected)

Parliamentarian
Petticoat Journal

State: (Appointed)

Auditor
Directory Chairman
Outstanding Youth Chairman
Secret Sister Chairman

District II

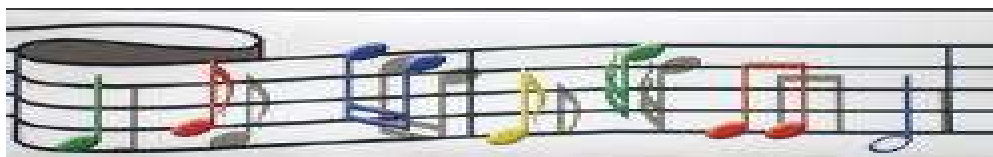
Coordinator
Secretary

Treasurer (2)
Parliamentarian

Chapter

President (4)
Vice President
Secretary (2)
Treasurer
Parliamentarian
Yearbook Chairman (13)

I have served many other offices in my chapter.



**Oklahoma State
Council**

Project Director

**Charlene
Law**

Gamma Delta #0702
Tulsa

2010-2011

I have been a member of Gamma Delta since March, 1990. Am a Life Active member, ESA Foundation Member, have my First Pearl, 1st, 2nd, 3rd, 4th Degree Pallas Athene and working on my 5th. And have pledged 6 members. I have had the opportunity to attend 18 State Conventions and 1 IC Convention.

I worked for Avis Rent a Car from 1985 until retiring in April 2009 and worked in Corporate Accounts as Account Service Representative. I developed a department Training and Reference manual for use in our department. As a result of my experience in this field I was selected as trainer for new employees to our area. I served as a member of the Employee Performance Group in a training and leadership role and made presentations related to these areas.

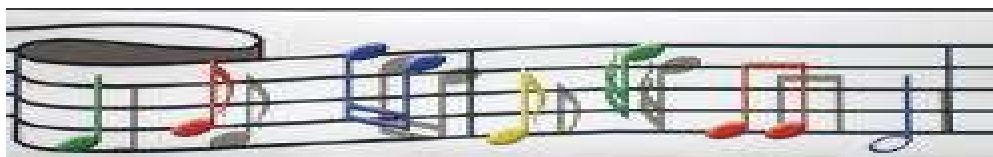
As a Group Leader in a previous department I attended out of town Travel Trade Shows to promote Avis.

Created and published a monthly department newsletter with information about our department and highlighted an Employee of the month.

Served on Care committee and chaired several committees for fundraising for the Little Lighthouse.

While on this committee created newsletter to update employees of fundraising events sponsored by the Care Committee.

Married to Allan Law for 41 years (4-08), three children and two grandchildren



Charlene Law

State (Elected)

Recording Secretary
Petticoat Journal Editor

Tulsa Area Council

President (2)
Vice President
Secretary
Treasurer
Parliamentarian
Directory (2)
Scrapbook
Capture for Kids (3)
St. Jude Radiothon

District III

Coordinator
Vice Coordinator
Secretary
Parliamentarian

State (Appointed)

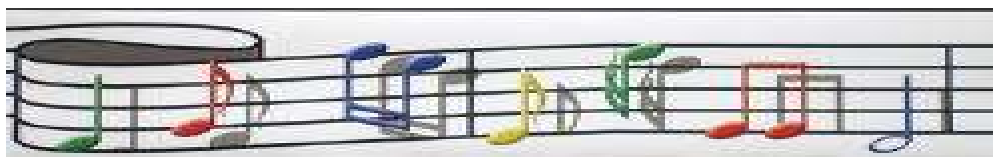
Association of the Arts
Directory
DIANA
Chaplain
Outstanding Youth
Philanthropic
Nominating Committee
Convention Committee (3)

Tulsa Arts & Craft Inc

Vice President
Chapter Representative (5)

Chapter

President (3)
Vice President (2)
Secretary (4)
Treasurer
Educational Director (2)
Parliamentarian (2)
Philanthropic Chairman (3)
Publicity Chairman (2)
Scrapbook Chairman
Yearbook Chairman
Social Chairman



***Oklahoma State
Council***

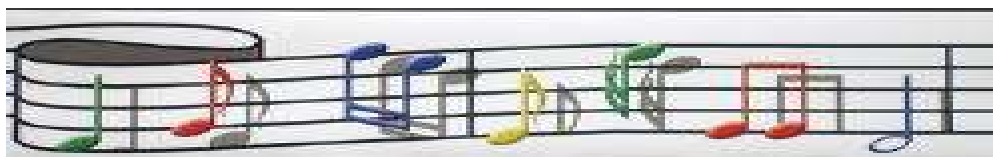
Parliamentarian

***Peggie
Sprinkle***

*Beta Gamma #0391
Tulsa*

2010-2011

I have been a member of ESA since 1967 and have held many offices. Since returning to Oklahoma in 2005 (and retiring), ESA has been a large part of my life. I want to continue to serve my Oklahoma sisters on the Oklahoma State Board. The good works we do throughout Oklahoma and the amazing sisters who give of their time is what makes Oklahoma ESA so GREAT!!! I will do my best to fulfill the responsibilities of the office of Parliamentarian if elected – or any other position on the Oklahoma State Council Board.



Peggie Sprinkle

State: (Elected)

*PJ Editor
(Note – many years
ago this was not
an elected position)*

District III

Secretary

Tulsa Area Council

*President
Secretary
Hope for Heroes Chairman
Co-Chair St Jude Dream Home Open House*

Chapter (Beta Gamma)

*President
Vice President
Parliamentarian
Educational Director
Ways & Means Chairman*

State: (Appointed)

*Easter Seals Chairman
Administrative Assistant
Chaplain
Publicity Chairman
Yearbook Chairman
Scrapbook Contest Chairman
Yearbook Chairman
History Chairman*

District II (Previous)

*Coordinator
Vice Coordinator*

Oklahoma City Area Council

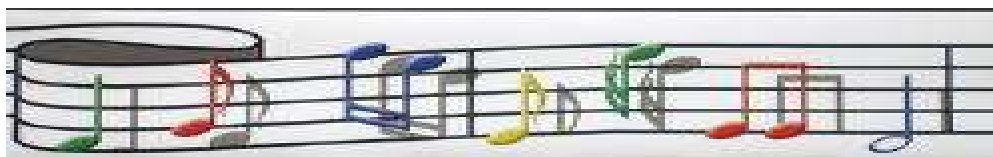
*President
Vice President
Secretary
Asst-State Convention
St. Jude Radiothon Co-Chair
Miss OKC Pageant Co-Chair*

Chapter (Alpha Delta)

*President
Philanthropic Chairman
Scrapbook Chairman
Yearbook Chairman*

Chapter (Omicron Kappa)

*President
Parliamentarian
Scrapbook Chairman
St. Jude Bike Ride Chairman*



***Oklahoma State
Council***

Petticoat Journal Editor

***Mary
Adams***

*Gamma Pi #5091
Inola*

2010-2011

Becoming involved in ESA has been one of my most growing and rewarding experiences. I joined Gamma Pi Chapter in Inola in December 2005. Working on the many projects that benefit our community has helped me get to know some very special ladies and many members of our community.

I attended my first ESA District meeting in 2007, State Council meeting in 2008 and Convention 2009.

My working career was in Banking and I've been employed in several banks in Tulsa and one in Oklahoma City from 1952 through 2007. During that time I served as chairman of several banking organizations and chaired several committees for the Oklahoma Bankers Association.

It is an honor and challenge to become more involved in ESA at the State Level.

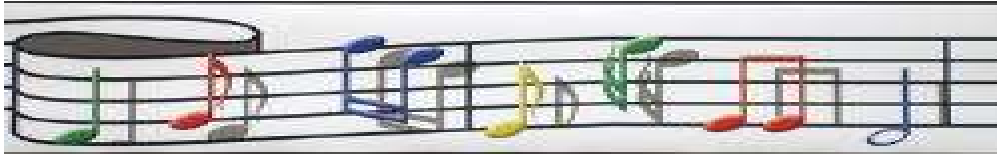
Chapter

President

Vice President

Parliamentarian

Philanthropic



Other Officers to be Installed

2010-2011

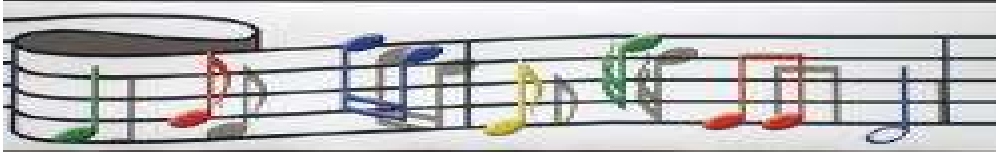


Bunnie Sullins
Senior Past President
Workshop Coordinator



Deb Hughes
Junior Past President
Disaster Fund Chair





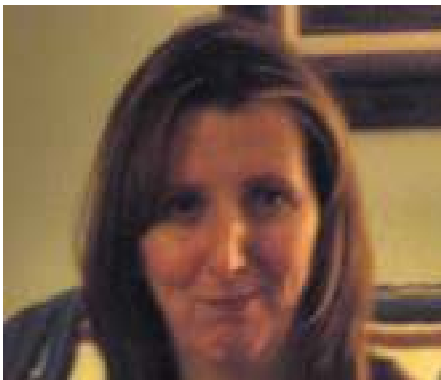
District Coordinators
2010 – 2011



Nellrita Barrick
District II
Coordinator



Rosemary Benning
District III
Coordinator



Nancy Baucom
District IV
Coordinator



Jeanne Meyer
District V
Coordinator

**ATTENTION ALL OKLAHOMA ESAERS.....
COME TO THE OKLAHOMA STATE CONVENTION
AND JOIN IN THE FUN AT THE**

**“IT’S IN THE BAG” SILENT AUCTION
FRIDAY NIGHT, APRIL 30, 7:00-10:00 pm**



**Please bring your donated items
for the Silent Auction**

***IN A BAG*...any kind of bag...paper bag, plastic bag, gift bag,
hand bag, tote bag....Put a picture of the item or a list of the
contents on the outside of the bag and who is donating it. Be
creative with your bags and **MAYBE THERE WILL BE A
PRIZE FOR THE BEST BAG!****

**You may turn “your bag” in Friday afternoon when you
register for convention between 1:00 pm and 5:00 pm.**

**Questions? Contact Nellrita Barrick, Peggie Sprinkle or
June Miller.**



67th Annual Oklahoma State Convention
“ESA...It’s In The Bag”
April 30, May 1, 2, 2010

Tentative Agenda

(Please check the convention program upon arrival for final agenda)

FRIDAY, APRIL 30, 2010

12:00 p.m. – 7:30 p.m.	Ballroom Foyer	Registration Tables Open
12:00 p.m. – 5:30 p.m.	Ballroom Foyer	Silent Auction Check-in
12:00 p.m. – 5:30 p.m.	Ballroom Foyer	Informational & Sales Tables
12:00 p.m. – 5:30 p.m.	Hospitality Suite 9 th Floor #929	“Bag of Tricks” (open to all)
12:00 p.m. – 5:30 p.m.	Chilacco Room	Association Of The Arts Check-in
1:00 p.m. – 1:45 p.m.	Seminole Ballroom	“It’s Money In Your Bag” Workshop
2:00 p.m. – 2:45 p.m.	Seminole Ballroom	TBA Workshop
3:00 p.m. – 3:45 p.m.	Seminole Ballroom	“Mix It Up” Workshop
4:00 p.m. – 5:00 p.m.	Regency Room	Leadership Workshop IC Representative
5:15 p.m. – 6:00 p.m.	Presidential Suite 9 th Floor #909	Reception Executive & General Board & Sooner Seniorettes (By Invitation)
6:00 p.m. – 6:15 p.m.	Presidential Suite 9 th Floor #909	First Time Attendees Reception
6:15 p.m.	Ballroom Foyer	No Host Cocktails
6:30 p.m.	Ballrooms E-F-G-H	Fajita Buffet Dinner (Ticketed Event)
8:00 p.m. – 10:00 p.m.	Ballrooms E-F-G-H	Silent Auction, Mixer, Skits & Fun
10:00 p.m. – 10:30 p.m.	Ballroom Foyer	Registration Tables Open
10:00 p.m. – 11:59 p.m.	Hospitality Suite 9 th Floor #929	“Bag of Tricks” (open to all)

SATURDAY, MAY 1, 2010

7:30 a.m. – 8:15 a.m.	Ballroom Foyer	Registration Tables Open
7:30 a.m. – 8:15 a.m.	Ballroom Foyer s	Informational & Sales Tables
8:25 a.m.	Ballrooms E-F-G-H	Doors Will Close
8:30 a.m.	Ballrooms E-F-G-H	First General Assembly
10:30 a.m. – 5:30p.m.	Hospitality Suite 9th Floor #929	“Bag of Tricks” (open to all)
12:00 noon – 2:30 p.m.	Ballrooms E-F-G-H	Recognition Luncheon View Association Of The Arts
2:30 p.m. – 3:30 p.m.	Regency Room	Incoming Outgoing Board Meeting 2009-2010 Executive & General Board 2010-2011 Executive & General Board
2:30 p.m. – 3:30 p.m.	Seminole Ballroom	TBA Workshop
5:00 p.m.	Presidential Suite 9th Floor #909	Candidates Reception By Invitation
5:00 p.m. – 6:00 p.m.	Ballroom Foyer	Group Photos To Be Taken
5:45 p.m. – 6:15 p.m.	Ballrooms E-F-G-H	Installation Rehearsal
6:25 p.m.	Ballrooms E-F-G-H	Doors Will Close For Installation
6:30 p.m.	Ballrooms E-F-G-H	Installation, Banquet & Receiving Line
10:00 p.m. until ?	Hospitality Suite 9th Floor #929	“Bag of Tricks” (open to all)

SUNDAY, MAY 2, 2010

8:10 a.m.	Ballrooms E-F-G-H	Doors Will Close
8:15 a.m. – 8:45 a.m.	Ballrooms E-F-G-H	Celebration Of Life Service
9:00 a.m. – 12:00 Noon	Ballrooms E-F-G-H	Brunch Second General Assembly

Chapter Chatter

Beta Gamma Tulsa

As another outstanding year for our chapter is coming to a close, we salute our leaders:

Judi York, 2009-2010 International Council Chaplain and 2010 Oklahoma State Convention Co-Chair (also Beta Gamma President!)

Deb Hughes, 2009-2010 Oklahoma State Council President

Peggie Sprinkle, interim 2009-2010 Oklahoma State Council Easter Seals Chair plus Administrative Assistant and 2009-2010 Tulsa Area Council Parliamentarian

Cheryl Young, 2010 Oklahoma State Convention Co-Chair and 2009-2010 District III Coordinator, now 2010-2011 District III Parliamentarian

Peggy Hughes, 2009-2010 Oklahoma State Council Administrative Assistant, and 2010-2011 District III Vice-Coordinator, and 2009-2010 Tulsa Area Council Vice-President

Connie Bartlett, 2009-2010 Oklahoma State Council Administrative Assistant and 2009-2010 Tulsa Area Council Secretary.

Those of us who hold offices outside our chapter could not carry on our duties without the tireless efforts of our sisters and brother back home in our own chapter: Jennifer Jezek, Jeanne Kindley, Frances Mann, Donna Rother, Cathy Schmitt, Catherine Westbrook and Steve York. *By the way, we're helping to host the state convention in April too.* Is it bragging? Probably. We are a small group but we are mighty!! We say, "Yes!" when the call comes to serve. We proudly work along side you, our sisters, (and a few brothers), in ESA, to make a difference. Thank you for helping us, little by little, to make the world a better place. We hope to see you at the state convention! Believe.

Beta Iota McAlester

Beta Iota is bouncing back and ending this year

with a bang! We are so proud of Tina McKamie, currently the Corresponding Secretary on the State Council. She is running for State Council Treasurer. She has the perfect qualifications for that job.....go Tina!

We have re-instated Tonna Lovette who came back to us after 16 years. Heather Drummond from Epsilon Kappa, Hominy, has moved to our town and has visited our meeting. We are hoping she will transfer into Beta Iota.

The OSB Tour found Tonna, Tina Hearod, Amber, Kirby, Mona and June in Muskogee enjoying the meeting, food, and program. We brought gifts for our sponsored kids, Andrew Wagon and Ashley Fish. Amber officiated at the District V meeting since Elaine, District V Coordinator, is still ill and in the hospital. Good job, Amber! June installed the new officers and project director, three of which were Beta Iota Members.....Amber Alexander, Elaine Ockletree, and Kirby Thomason. We all brought items for the Bake Sale to raise funds for the Kelly B. Todd Center.

We just had our first BUNCO BLAST event and we had so much fun!



Thanks Tina Hearod for chairing this event!

See you all at convention!

Delta Chi Midwest City

Delta Chi members were sorry to see Leona Payne resign from the chapter. Leona fell sometime ago and just hasn't got back to being

Chapter Chatter

able to go much.

Laura Robinson has been nominated for Dist. IV Treasurer and we are looking forward to attending the meeting March 13th in Lawton.

We have been busy studying about the different attractions in Oklahoma this year as well as watching the progress on the HUGS PROJECT. Yes, we voted and ended up in 10th place. Definitely in the money, just waiting for the audit now.



Louise Watkins was married to Ed Grace on January 16th. Helen Taylor and her family attended the wedding at the First Christian Church. Congratulations to Louise and Ed.

The weather has not been the best, so no road trips as yet.

Delta Kappa Norman

The weather has played havoc with our meetings. We have had to reschedule several times and finally combined a meeting with an Educational and met on the third Tuesday. We held election of officers and Woman of the Year; a transfer and a welcome back ceremony; also reviewed and voted on the bylaws at our last meeting. It was a very busy evening.

We added a new chairmanship in our chapter this year. We refer to it as "Local Special Projects Philanthropic Chairman." We have added so many local special projects, we felt we needed a chairman just for those projects. Karen Nix is chairman and there are several members who are serving on the committee. Some of the special projects

include Aid to the Homeless; City Wide Christmas Dinner, the Pastor's Care Closet at Goodrich Memorial United Methodist Church; and the Norman Veterans Center.

DK's Award's Banquet has been scheduled for April 19, 2010, at Olive Garden in Norman.

Congratulations to Mary Rohr, who became a great grandmother on March 26, 2010. The bundle of joy weighed 7# 8 oz and 20 inches long; his name is Jaxon Henry.

Delta Kappa's 2010-2011 officers are: President, Joyce Gibson; Vice President, Karen Nix; Secretary, Gwynn Nell Swanson; Treasurer, Janice Shockley; Educational Director, Linda Leveridge; Philanthropic Chairman, Helen Checorski; Ways and Means Chairmen, Mozelle Smith and Betty McCallister. Our installation is May 17.

We look forward to seeing you at Convention. Enjoy your spring and summer.

Gamma Delta Tulsa

January was so-o-o-o cold. I still can't get warm. Could be old age. Ha-ha. We had our business meeting at Gladys Murphy's. As usual, Gladys puts on a good spread.

February was a busy month. We attended Tulsa Area Council and had our business meeting at the home of John Stapleton. He made the dessert, and it was to die for. We had a pledge ceremony for our new member, Pat Britt. A re-instatement ceremony was also held for Dawn Haley, daughter of John and Barbara Stapleton.

Donna McCandless, Charlene Law, Jessica Gresens, Bette Harvey, and Rosemary Benning attended the Parkview Tour. The new District III officers were installed and are as follows: Coordinator, Rosemary Benning; Vice-Coordinator, Peggy Hughes; Secretary, Mary

Chapter Chatter

Johnson: Treasurer, Debbie Thompson; Parliamentarian, Cheryl Young. I would like to thank Jane and the staff at Parkview for a wonderful meal and a very informative program.

March started out busy also. We first attended Tulsa Area Council. Some of us volunteered for the St. Jude's Radiothon held at KVOO Radio Station. It is always wonderful to raise money for St. Jude's and find it so rewarding to do so. Our business meeting was held at Byrdie Emanuel's. Needless to say we ate again and again and again.

Gamma Kappa Checotah

Greetings from Gamma Kappa, Checotah

We hope that you are all well and looking forward to spring and convention. Our group is working on distributing scholarship application to the local high schools, voting for a new slate of officers and choosing our chapters sister of the year. We celebrated Valentine's Day dining out with our significant others at a new restaurant in Eufaula, a fun time was enjoyed by all.

Ruth Thompson, a 40 year member of ESA was installed as District V Vice Coordinator at the OK School for the Blind Tour 2/27.

Ellen Rink is recovering slowly but well from recent back surgery. We would like to request prayers for Albert Tate, Elizabeth's husband who is very ill.

Gamma Kappa Sisters wish you all well in your endeavors to meeting your ESA goals. Deb enjoy the remainder of your term, we are proud of your successes as our leader and appreciate the endless hours you spent inspiring each member and graciously representing ESA, and Oklahoma.

Kappa Theta Guthrie

Burrrr....We are hoping the snow and cold weather is about to end. Jeanne Prince hosted our January business meeting and treated us to her wonderful chicken-tortilla soup. Attending were Marie Thomas, Jeanne Prince, State 1st VP Jacque Edwards, Connie Johnson, Libby Zaage, Dist.II Sec. Sylvia Ochs, and guest Michelle Carrier.

On January 25, we held our annual DIANA/ Outstanding Sr. High Youth Banquet honoring youth Rachel Roberts and what a truly outstanding youth. Her activities and volunteerism to the community is overwhelming. Also, we honored our DIANA Alma Bramer for her volunteerism to the Meals on Wheels program for the elderly.

Jacque Edwards coordinated the St. Jude Radio-thon held at KKNK on January 28-29. On Thursday, the ice and snow came in and everyone had to de-ice their cars before leaving the KKNK by 10 a.m. The Radio-thon re-scheduled to February 1-2. Jacque worked both days from 6 am-7 pm due to some conflicts of re-scheduling, however, \$102,930 was raised for St. Jude. Woohoo!!!!

State 1st VP Jacque Edwards and State 2nd VP Gwynn Swanson from Delta Kappa, Norman both attended the Leadership Conference in Denver, CO on Feb. 4- 7 WOW!!! What a Leadership seminar. They both returned with a lot of new information to share with the Oklahoma Council members.

Libby Zaage hosted our February 8 business meeting. She loves to cook and served us Taco Salad, Chicken/Noodle Soup and delicious desserts.

February 20, Kappa Theta members met with the 2011 Convention Chair Ramona Paine and Co-Chair Cathy Holsted along with the other hosting chapters Theta Tau, Beta Psi, Beta Zeta, Gamma Zeta, Zeta Gamma, Omega Pi and Sigma Chi for their first 2011 Convention planning meeting. A lot was accomplished.

Chapter Chatter

Jacque Edwards attended the Oklahoma School for the Blind Tour day held in Muskogee on February 27. She delivered gifts to our sponsored students Austin Goolsby and Carley Cremin.

We are all looking forward to our own Jacque Edwards being installed as the Oklahoma State Council President and her daughter Shelly Labus being installed as her Corresponding Secretary at Convention coming up April 30-May 2.

See you there!!!!!!



Dear Members of Epsilon Sigma Alpha

I hope you will consider submitting at least one Association of the Arts entry for IC in July.

It is not too soon to start making plans, in fact, now is a great time before all the business of errands, trips, packing, etc., for your State Conventions begin, and (hopefully) plans to attend IC in Minnesota!

How wonderful it would be if we had submissions from every State (and Country, Australia !) and even more wonderful it would be if YOUR state won the big award, for having the MOST entries! This is something ESA members can do to let your talents shine. Everyone has SOMETHING that they do well. Come on, you know it's true. Just take a few minutes to think about what that might be, if you are not already aware. Look over the entry form at the different categories. There's something there for you.

This year's form can be obtained by going to esaintl.com then clicking on to "IC". From there click on to "Forms". Association of the Arts is the first one you will come to. If you need me to send a hard copy, just let me know. If you need more information or guidance, again, just let me know.

Jan Billias, IC Association of the Arts Chairman
janbillias@hotmail.com
321-783-0731

**Epsilon Sigma Alpha International
Oklahoma State Council
Executive and General Board Meeting Minutes
April 10, 2010**

Executive and General Board Meeting of the ESA Oklahoma State Council was called to order by State President Deb Hughes at 9:39 a.m. at the First Christian Church, Shawnee, OK.

Due to severe weather conditions the March 20, 2010 meeting was postponed and rescheduled to April 10, 2010 by Deb Hughes. Appreciation was expressed to those modifying their schedules to attend the rescheduled meetings.

All members were welcomed with a reminder only Board members may vote at Board meetings.

Introductions were deferred until the State Council meeting.

New members and first time state meeting attendees were recognized by State President Deb Hughes.

The committee to read the minutes of the November 7, 2009 Executive and General Board Meeting was Ramona Paine, Chair, Linda Southerland and Linda Voss. Linda Southerland reported the minutes correct as printed.

The committee to read the minutes of this meeting is: Patsy Timmons, Chairman, Linda Southerland and Peggie Sprinkle.

Correspondence received will be attached to the official minutes.

Officer and Chair Reports

Parliamentarian Linda Southerland reported there are no bylaw changes to present to the Board or Council.

Treasurer Joyce Gibson made a motion that reimbursement not to exceed \$25.00 be set aside to pay excessive amounts over budget for members of Executive and General Board. Motion seconded by Cheryl Young; motion carried.

A new charm for the president's gavel will be purchased this year at a cost of \$15.75 plus tax. Cost of engraving which exceeds budgeted amount of \$10.00 Joyce Gibson made a motion to increase the cost to purchase and engrave the charm, not to exceed \$30.00. Motion seconded by Marcie Ellington, Delta Kappa; motion carried.

Petticoat Journal June Miller, representing the "Angels" proposed a motion that the price of the Petticoat Journal, for first class mail, remains the same at \$15.00. Motion seconded by Peggy Hughes, Beta Gamma; motion carried.

Deb Hughes handed gavel to 1st Vice President, Jacque Edwards to enable Deb to report as Acting Directory Chair and to make a motion.

Deb Hughes, reporting for Directory Chair, announced to date 96 directories has been sold at the price of \$8.00. Four directories half-price were available.

Deb Hughes made a motion that the price of the State Directory remain at the cost of \$8.00 each. Motion seconded by Mary Toole, Zeta Gamma; motion carried.

Contest Chairman Maxine Wheelan reported on contests, advising contest chairmen of contest final results report and judging sheets. All chairmen should complete a Certification of Final Results Report. Maxine asked Aletha Bolt to explain this report.

Aletha reminded us to check the website www.oklaesa.org as all reports are available online. The Certification of Final Results Report was created June 2009 to simplify the reporting for the contest chairman on the judged contests.

Billye Peterson suggested as a courtesy to leave a note with the books to incoming chairman of any changes.

Outstanding Chapter Chair Marcie Lucas Ellington asked to get reports to her as quickly as possible. She has emailed or phone chapters for reports.

Webmaster Aletha Bolt requested the board members do housekeeping on their email mailbox for their office or chair. Most important, if you changed the password from esa2008, let your successor know the password. If you need any help with the website Aletha will make house calls for assistance. If the password changed to one of your personal favorites the esa2008 may not work due to new requirements for passwords.

Treasurer Joyce Gibson asked that vouchers be turned in to her as soon as possible.

Judi York invited all members to the 67th Oklahoma State Convention.

New Business

Deb Hughes reminded the Executive and General Board members of procedures and special instructions for convention.

Announcements

Participation was encouraged at the tables and special activities displayed

The Oklahoma State Council meeting will begin at 10:45 a.m. with lunch.

Meeting adjourned at 10:30 a.m.

Charlene Law
Recording Secretary
2009-2010

**Epsilon Sigma Alpha International
Oklahoma State Council Meeting Minutes
April 10, 2010**

The Oklahoma State Council meeting of Epsilon Sigma Alpha International was called to order by State President Deb Hughes on April 10, 2010 at 10:53 a.m. at the First Christian Church, Shawnee, OK. Due to severe weather conditions the March 20, 2010 meeting was postponed and rescheduled to April 10, 2010 by Deb Hughes. Appreciation was expressed to those modifying their schedules to attend the rescheduled meetings.

Chaplain Mary Toole read her thought for the day. Mary Toole then led the Pledge of Allegiance.

District 3 Coordinator Cheryl Young and Billye Peterson introduced The Hugs Project and with the help of the members stuffed the neck pillows and wrote thank you notes to the deployed troops.

Membership Chair, Rita Hains made a presentation on membership with an activity for the members to note suggestions to increase the Oklahoma membership. Rita reported as of April 30, 2009, Oklahoma had 57 chapters, 830 members and 127 MAL. As of March 31, 2010, we have 54 chapters, 807 members and 120 MAL.

INTRODUCTIONS

Past IC President, Past ESA Foundation Chair, 2012 IC Convention Chair, Sooner Seniorett and keeper of our Wishing Jar: Cathy Holsted

IC Chaplain, Sooner Seniorett, 2010 Convention Chair, IC Parliamentarian nominee: Judi York

IC Audit Committee Member, Webmaster, Sooner Seniorett and State Webmaster, Aletha Bolt.

ESA Foundation Director, Sooner Seniorett: Vivian Gibson

Past ESA Foundation Chair, Sooner Seniorett, State Auditor: Lola Jaegers

Past ESA Foundation Director, Sooner Seniorett, and newly installed District V Coordinator, Jeanne Meyer.

Dixie Palmer Founders and Sooner Seniorett: Billie Fritch and Joyce Whitewing Slate.

Sooner Seniorett, our Past State Presidents, please stand so we may acknowledge you.

RECOGNITION OF MEMBERS

Deb Hughes recognized the first time attendees to the State Council Meeting. Delta Epsilon chapter had a new pledge, Sally Dryer, in attendance.

Today's attendance was 50 members.

The committee to read the minutes of the November 7, 2009 State Council Meeting was Ramona Paine, Chair, Linda Southerland and Linda Voss. Linda Southerland reported the minutes correct as printed.

The committee to read the minutes for this meeting is Patsy Timmons, Chair Linda Southerland and Peggie Sprinkle. We broke for lunch at 12:10. Mary Toole offered a blessing.

The meeting resumed at 1:05 PM

Corresponding Secretary, Tina Davenport-McKamie was absent and Deb Hughes read list of members sending regrets for the meeting. Correspondence will be attached to official minutes.

OFFICER & COMMITTEE CHAIR REPORTS

1st Vice President/ Nominating Chair, Jacque Edwards, introduced the Nominating Committee members: Lora Thompson, Peggy Pate, Sue Knight and Aletha Bolt. Jacque introduced the 2010-2011 Executive Board: District II Coordinator, Nellrita Barrick; District III Coordinator, Rosemary Benning; District IV Coordinator, Nancy Baucom; District V Coordinator, Jeanne Meyer, Sr. Past President, Bunnie Sullins; Jr. Past President, Deb Hughes; Petticoat Journal Editor, Mary Adams; State Project Director, Charlene Law; Parliamentarian, Peggie Sprinkle; Treasurer, Tina Davenport-McKamie; Recording Secretary, Linda Southerland; 2nd Vice President, Joyce Gibson; 1st Vice President, Gwynn Nell Swanson; Corresponding Secretary, Shelly Labus and President, Jacque Edwards

Jacque reported on February International Council Leadership Seminar. The attendees were provided great information. She learned so many things from this leadership and thanked the State Council for sending her.

2nd Vice President/ Educational Director, Gwynn Nell Swanson, thanked all the chapters that presented an educational on her theme. Gwynn Nell also reported on the IC Leadership Seminar and shared some of the high points of the meetings.

Treasurer, Joyce Gibson, reported

General Fund: Balance Forward	\$7,226.69
Income (+)	\$2,406.89
Expenses (-)	\$2,714.75
Balance	\$6,918.83
DOER'S Fund Balance	\$ 322.25
Speaker's Fund Balance (CD int)	\$1,214.19
IC Campaign Fund Balance	\$ 219.36
Certificate of Deposit Balance	\$4,010.94

Joyce Gibson reported a few board members have exceeded their budgeted amount by a few dollars this year.

Upon a recommendation of the Executive and General Board Joyce Gibson moved that reimbursement not to exceed \$25.00 be set aside from the contingency fund to pay excessive amounts over budget for members of Executive and General Board Motion carried.

Every other year a new charm is purchased and engraved for the President's gavel. Cost to purchase a new charm with engraving for the gavel exceeds the budgeted amount of \$10.00. Cost of new charm is \$15.75 plus tax plus engraving is \$10.00.

Upon recommendation of the Executive and General Board Joyce moved to increase the cost to purchase and engrave the charm, not to exceed \$30.00. Motion carried.

Petticoat Journal Editor June Miller, representing the Angel Team, reported the last issue of the PJ will be posted on the website this coming week. The printed copy will go out this week also. We had 70 subscriptions mailed this year at a cost of \$15.00. Upon recommendation from the Executive and General Board, June Miller moved the price of the Petticoat Journal, for first class mail, remain the same at \$15.00. Motion carried

State Project Director, Robbin Brown, had a few names of students from OSD and OSB not yet adopted with a request they be sponsored for the remaining part of the school year. Suggestions would be send a summer pack or Wal-Mart or Sonic gift cards. Robbin says you will have to come to convention to learn how much was donated to our State Project.

Jr. Past President/Disaster Fund Chair Bunnie Sullins reported out of 54 chapters 34 chapters donated to the Disaster Fund and to find out if she met her goal, come to convention!

Deb Hughes read regrets received for the Council Meeting held April 10, 2010. Deb read a thank you note received from Elaine Ockletree for all the cards and prayers she received.

In the absence of Circle of Life Chairman, Nellrita Barrick, Linda Southerland gave her report. She reminded chapters participating in the "Parade of Placards" Saturday night at the convention to contact her with name of your representative. The St. Jude Babes will be available at the Silent Auction Friday night at convention. Certificates were handed out to all chapters participating at the St. Jude Radiothon both in Tulsa and Oklahoma City.

Deb reported on the new fundraisers for St. Jude: Up Your Game for St Jude: An ESA Bunco Event and leave your Personal Footprint on the campus of St. Jude by purchasing a brick at a cost of \$1,500.00. Information for both events may be found on the ESA website.

Deb Hughes handed gavel to 1st Vice President Jacque Edward

Deb Hughes reported that Tina Davenport-McKamie asked that everyone please submit any outstanding donations for the Give Thanks Walk immediately.

Deb Hughes reported to date 96 directories have been sold for \$8.00 each with 4 directories remaining. Upon recommendation of the Executive and General Board, Deb Hughes moved the price of the State Directory remain at the cost of the \$8.00 each. Motion carried.

2010 State Convention Chairman, Judi York, reminded everyone of the dates of convention - April 30- May 2, 2010. Members were shown a PowerPoint with information about Convention.

Auditor Lola Jaegers reported she pre-audited the books of the State Treasurer, State Project Director, State Convention Chairman, Petticoat Journal Editor (Angels) and the Acting Directory Chairman. These books were all in order. She also offered to audit any books for chapters or Districts.

Contest Chairman Maxine Wheelan thanked all chapters for their participation.

2012 IC Convention Chair, Cathy Holsted reported on the 2012 IC Convention to be held in Norman, OK at the Embassy Suites. She presented the red dirt t-shirts and aprons which will be the convention wear for Oklahoma members.

A motion was made by Cathy Holsted to loan the 2012 IC Convention fund one-half of the money jar to open an account for the IC 2012 Convention. When funds are available they will be returned to State Council. Motion seconded by Judi York; motion carried.

ESA Foundation Counselor, June Miller reminded members we will have a Silent Auction Friday night at state convention to benefit ESA Foundation, Easter Seals and Circle of Life.

Sooner Seniorette President, Patsy Timmons reported a meeting was held Friday evening, April 9, 2010 and thanked Deb for her gift.

Philanthropic Chair, Mary Ann Jones reported on information for IC Project. IC President Jamie Atchison requests each state to participate in a national food drive between now and concluding at the IC Convention in July. Details provided to members with form to report any donations.

Easter Seals Chair, Peggie Sprinkle, stated that a report will be given at State Convention of monies and hours raised for Easter Seals. ESA International and National Easter Seals are partnering to provide funds for the CAMP HOPE program to provide camping opportunities for children of military families.

Chaplain Mary Toole reported on the Celebration of Life Service at Convention. Mary still needs a candle lighter for some ESA sisters; she also needs pictures of Ann Michaels, Delta Epsilon, Del City; Jean Rhodes, MAL of Guthrie; and Doris Peavler of Delta Lambda, Muskegon. She needs pledge dates on Bettie Mathews, Ann Michaels or Jo Talbert. Please get this information to her as soon as possible.

Linda Voss and Robbin Brown are honored to present the flag ceremony at State Convention. Once again, chapter president or representative will carry their banners, please forward name of representative from your chapter. Please wear red, white or blue.

Outstanding Youth Chair, Margaret Kramer submitted following report: "First I would like to thank the chapters that submitted contestants." Her judges shared the same thoughts "It was the hardest decision they had to make". Margaret encouraged every chapter to make an effort to submit an entry and recognize these outstanding students.

Unfinished Business: None

New Business: None

ANNOUNCEMENTS

Jacque Edwards requested a short meeting with those planning to attend the IC Convention. Sigma Chi chapter, Inola, Garage Sale on Friday April 16, and Saturday April 17.

Maxine Wheelan presented a bag from the Midwest City Relay for Life event to Deb with Believe theme.

Drawings were held

The meeting was adjourned at 2:40 p.m. The members joined in the closing ritual.

Respectfully submitted
Charlene Law
Recording Secretary
2009-2010

ESA International Council President Jamie's VIRTUAL FOOD DRIVE

Here's how it works:

- Collect FOOD and CASH locally and report it (see form below)
- **Bring FOOD COLLECTION to OK State Convention, April 30, 2010**
- Sponsor chapter food drives
- Support local food programs with direct donations & service
- Work with an employer to have food collections at the work place
Get creative ... try something new!

GROUNDBREAKING ESA FOOD DRIVE @ IC CONVENTION

The culmination of the Virtual Food Drive will be the first public event at IC Convention! ESA along with Second Harvest Food Pantry, local colleges, media outlets and the Boy Scouts will hold the largest public food drive ever. We will be collecting food all week with the big reveal on Saturday morning during the General Assembly. If you are attending IC Convention you can help us share ESA with the community!



ESAers working to end hunger
 Donations remain in your locale
 \$1 cash can purchase \$9 worth of food at the food bank
 \$5 donation can equal 18 meals
Join hands across the country to show that ESA Cares!

OKLAHOMA COLLECTION REPORTING (deadline July 1, 2010)

Chapter Name & # _____	City _____
Number of donated goods or pounds _____	
Hours to purchase, collect, sort & deliver _____	
Actual miles to purchase, collect, sort & deliver _____	
Monetary value of donation _____	
Cash donation to Community Food Bank of Eastern Oklahoma or Regional Food Bank of Oklahoma or local program (List name of organization and amount of donation) _____	
Organization name & city where you donated items, if not OK State Convention _____	
Chapter contact name _____	

Tear off and bring with you to convention or send this report by July 1, 2010 to either person:

Deb Hughes 2817 S. Hudson Ave., Tulsa, OK 74114 Email debokesa@hotmail.com
 Mary Ann Jones 536 N. Beard, Shawnee, OK 74801 Email Maryann74801@aol.com

2010-2011 DIRECTORY CHAPTER INFORMATION

CHAPTER NAME & NUMBER	CITY
<p>PRESIDENT</p> <p>Name _____</p> <p>Address _____</p> <p>Phone(H) _____ (W/C) _____</p> <p>E-mail _____</p>	<p>VICE PRESIDENT</p> <p>Name _____</p> <p>Address _____</p> <p>Phone(H) _____ (W/C) _____</p> <p>E-mail _____</p>
<p>SECRETARY</p> <p>Name _____</p> <p>Address _____</p> <p>Phone(H) _____ (W/C) _____</p> <p>E-mail _____</p>	<p>TREASURER</p> <p>Name _____</p> <p>Address _____</p> <p>Phone(H) _____ (W/C) _____</p> <p>E-mail _____</p>
<p>EDUCATIONAL DIRECTOR</p> <p>Name _____</p> <p>Address _____</p> <p>Phone(H) _____ (W/C) _____</p> <p>E-mail _____</p>	<p>PARLIAMENTARIAN</p> <p>Name _____</p> <p>Address _____</p> <p>Phone(H) _____ (W/C) _____</p> <p>E-mail _____</p>
<p>PHILANTHROPIC</p> <p>Name _____</p> <p>Address _____</p> <p>Phone(H) _____ (W/C) _____</p> <p>E-mail _____</p>	<p>MEMBER</p> <p>Name _____</p> <p>Address _____</p> <p>Phone(H) _____ (W/C) _____</p> <p>E-mail _____</p>
<p>MEMBER</p> <p>Name _____</p> <p>Address _____</p> <p>Phone(H) _____ (W/C) _____</p> <p>E-mail _____</p>	<p>MEMBER</p> <p>Name _____</p> <p>Address _____</p> <p>Phone(H) _____ (W/C) _____</p> <p>E-mail _____</p>
<p>MEMBER</p> <p>Name _____</p> <p>Address _____</p> <p>Phone(H) _____ (W/C) _____</p> <p>E-mail _____</p>	<p>MEMBER</p> <p>Name _____</p> <p>Address _____</p> <p>Phone(H) _____ (W/C) _____</p> <p>E-mail _____</p>
<p>MEMBER</p> <p>Name _____</p> <p>Address _____</p> <p>Phone(H) _____ (W/C) _____</p> <p>E-mail _____</p>	<p>MEMBER</p> <p>Name _____</p> <p>Address _____</p> <p>Phone(H) _____ (W/C) _____</p> <p>E-mail _____</p>

ATTACH additional sheets as necessary to list all members. Mail or email completed form by **May 1** to:
1st Vice President/Pres. Elect ... Jacque Edwards ... 2101 E. Cooksey Rd.. Guthrie 73044
jerac09@hotmail.com or firstvp@oklaesa.org



**OKLAHOMA STATE COUNCIL
NOMINATION FORM
FOR 2010-2011 OFFICERS**

Please complete the nomination form and submit to the 1st Vice-President before March 1, 2010. All candidates must send their written consent, qualifications and a picture to the 1st Vice- President **BEFORE** March 1, 2010. The candidates for state offices will be presented at the March State Council meeting and their qualifications and picture will be published in the April/May issue of *The Petticoat Journal*.

SECOND VICE PRESIDENT

Name _____ Chapter _____
Town _____ Acceptance Attached _____
Nominee has been notified of nomination _____ Yes _____ No

RECORDING SECRETARY

Name _____ Chapter _____
Town _____ Acceptance Attached _____
Nominee has been notified of nomination _____ Yes _____ No

TREASURER

Name _____ Chapter _____
Town _____ Acceptance Attached _____
Nominee has been notified of nomination _____ Yes _____ No

PARLIAMENTARIAN

Name _____ Chapter _____
Town _____ Acceptance Attached _____
Nominee has been notified of nomination _____ Yes _____ No

PROJECT DIRECTOR

Name _____ Chapter _____
Town _____ Acceptance Attached _____
Nominee has been notified of nomination _____ Yes _____ No

PETTICOAT JOURNAL EDITOR

Name _____ Chapter _____
Town _____ Acceptance Attached _____
Nominee has been notified of nomination _____ Yes _____ No

Nominating Chapter Name & #: _____ **City:** _____
Contact: _____

Mail to: Jacque Edwards
2101 E. Cooksey Rd.
Guthrie, OK 73044
(405) 623-5884

Email: firstvp@oklaesa.org
or : jerae09@hotmail.com



Oklahoma State Council 67th Annual Convention
“ESA...It’s In The Bag”
April 30, May 1 & 2, 2010
Radisson Hotel, 10918 E 41st St., Tulsa, OK 74146
Phone: 918-627-5000 – Registration Deadline April 15, 2010

MEMBER NAME:		MEMBER NUMBER:	
ADDRESS:		CITY, STATE, ZIP:	
PHONE:	FAX:	EMAIL:	
CHAPTER NAME:	CITY:	CHAPTER NUMBER:	
CHECK ALL THAT APPLY:			
<input type="checkbox"/>	CHAPTER PRESIDENT	<input type="checkbox"/>	1ST TIME CONVENTION GOER
<input type="checkbox"/>	EXECUTIVE BOARD MEMBER	<input type="checkbox"/>	GENERAL BOARD MEMBER
<input type="checkbox"/>	CURRENT/PREVIOUS IC OFFICER	<input type="checkbox"/>	CURRENT/PREVIOUS ESAF BRD
<input type="checkbox"/>	SPECIAL DIET MENU/MEDICAL REASONS ONLY** ** CONTACT JUDI YORK, AT JYORK@YORKES.COM OR 918-605-2860		<input type="checkbox"/>
<input type="checkbox"/>			2009/2010 PLEDGE
<input type="checkbox"/>			SOONER SENIORETTE
<input type="checkbox"/>			GUEST
<u>MEN’S REGISTRATION:</u>			
NAME:		HUSBAND/ESCORT OF:	
<u>DESA/ELAN REGISTRATION:</u>			
NAME:		ESA MEMBER/CHAPTER:	
<u>GUEST REGISTRATION:</u>			
NAME:		GUEST OF:	
CHECK ALL THAT APPLY			
<input type="checkbox"/>	MEMBER’S FULL REGISTRATION FEE POSTMARKED BY APRIL 15, 2010 includes Friday night mixer (food extra), general assemblies, workshops, Recognition Luncheon, Banquet, and Brunch		\$85.00
<input type="checkbox"/>	MEN’S REGISTRATION FEE includes Friday night mixer (food extra) and Banquet		\$40.00
<input type="checkbox"/>	DESA/ELAN REGISTRATION includes Friday night mixer (food extra), general assemblies, workshops, Recognition Luncheon, Banquet, and Brunch		\$85.00
<input type="checkbox"/>	FRIDAY NIGHT MEAL FUNCTION (Fajita buffet with all the fixings)		\$25.00
<input type="checkbox"/>	BANQUET GUEST FEE		\$40.00
<input type="checkbox"/>	LATE FEE		\$25.00
TOTAL AMOUNT ENCLOSED			

Enclose Check Payable to:
 Mail Registration form and payment to:

2010 ESA State Convention Fund
 Sandy Saunders, Registration Chair
 7905 N. 144th E. Ave
 Owasso, OK 74055
 Phone: 918-609-5649
 Email: sandyk366@cox.net

CANCELLATION: If you find it necessary to cancel this registration, the full amount less a \$15.00 processing fee will be refunded if your written cancellation is post-marked no later than the April 15, 2010, deadline. Registrations postmarked after April 15, 2010, will be assigned seating where vacancies exist. We cannot guarantee that late registrants will be seated with their chapters.



Radisson®

RADISSON HOTEL TULSA

10918 E 41st St.
Tulsa, OK 74146

April 30, 2010
May 1 & 2, 2010

For Reservations call:
918-627-5000 and mention
Epsilon Sigma Alpha International for the
Convention room rate of \$92.00 per night
Parking is free

Reservations must be made by April 15, 2010

Oklahoma State Council 67th Annual Convention
"ESA...It's In The Bag" - April 30, May 1 & 2, 2010

CONVENTION PROGRAM AD FORM

The convention program will be 8½ x 11". There are three (3) ad sizes. Copy ready ad is requested. Ads in electronic format are preferred. *Deadline for ads is April 1, 2010.*

Name: _____ Chapter _____

Address: _____

City, State & Zip: _____

Phone: _____ Email: _____

_____ Full page ad(s) @ \$100.00 =	\$ _____
_____ Half page ad(s) @ \$50.00 =	\$ _____
_____ Quarter page ad(s) @ \$25.00 =	\$ _____
TOTAL	\$ _____

Send your ads & payment to:
Judi York, 908 S Sweet Gum Ave, Broken Arrow, OK 74012